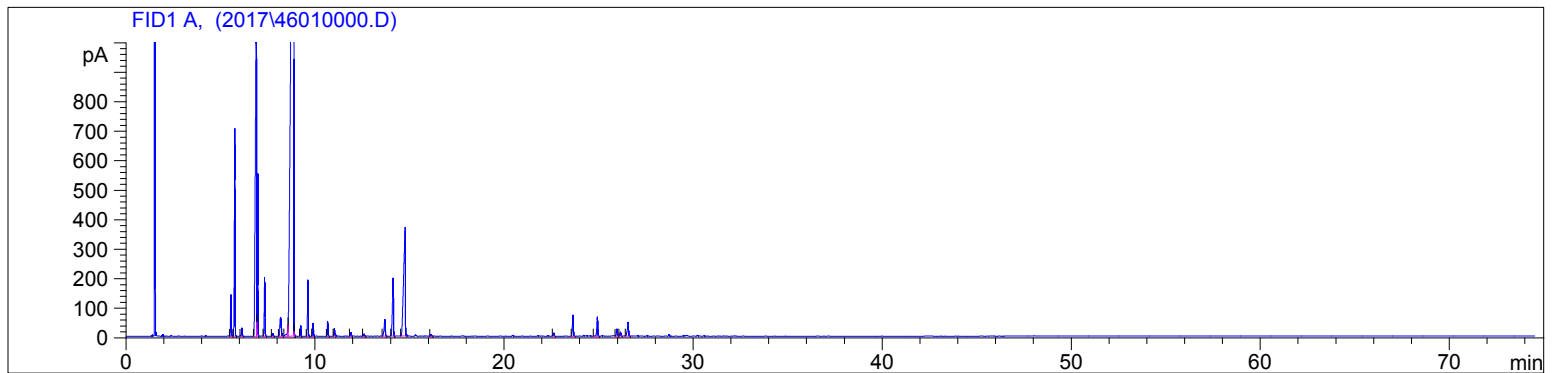


Ravintsara (Organic)
4601-CCZHU
Madagascar
cinnamomum camphora
Sample/CH2CL2: 0.10g/0.36g
Injection: 0.2uL

HP-5 5% Phenyl Methyl Siloxane
30.000m
250.000um
0.250um

3/8/2017 1:06:54 PM
3/8/2017 1:06:54 PM

3/8/2017
4:32:52 PM



#	Compound Name	Meas. Ret.	Amount	Response	Height	Area	Area %
1	alpha thujene	5.55	100.00	349.35	140.40	349.35	0.98
2	alpha pinene	5.75	100.00	1810.03	703.92	1810.03	5.09
3	camphene	6.12	100.00	74.75	27.38	74.75	0.21
4	sabinene	6.89	100.00	4894.96	1164.43	4894.96	13.76
5	beta pinene	6.96	100.00	1284.50	551.54	1284.50	3.61
6	myrcene	7.33	100.00	531.07	198.98	531.07	1.49
7		7.75	0.00	29.86	8.86	29.86	0.08
8	alpha terpinene	8.17	100.00	327.38	63.14	327.38	0.92
9	d-limonene	8.58	100.00	107.00	38.07	107.00	0.30
10	1.8 cineol	8.87	100.00	20917.78	2279.22	20917.78	58.80
11	cis beta ocimene	8.89	0.00	17.26	16.87	17.26	0.05
12	trans beta ocimene	9.23	100.00	85.44	35.33	85.44	0.24
13	gamma terpinene	9.62	100.00	516.31	190.53	516.31	1.45
14	cis-sabinene hydrate	9.89	0.00	117.69	43.92	117.69	0.33
15	terpinolene	10.66	100.00	135.45	49.63	135.45	0.38
16	linalool	11.01	100.00	74.13	25.09	74.13	0.21
17		11.89	0.00	35.56	12.02	35.56	0.10
18		12.59	0.00	24.23	7.00	24.23	0.07
19	3-thujanol	13.68	0.00	237.06	55.69	237.06	0.67
20	terpin-4-ol	14.13	100.00	758.06	196.77	758.06	2.13
21	alpha terpineol	14.76	100.00	2364.63	367.16	2364.63	6.65
22		16.13	0.00	21.49	6.16	21.49	0.06
23		22.62	0.00	35.21	10.31	35.21	0.10
24	bera caryophyllene	23.64	100.00	254.07	71.20	254.07	0.71
25	alpha humulene	24.93	100.00	232.69	64.64	232.69	0.65
26		25.97	0.00	85.11	23.92	85.11	0.24
27		26.15	0.00	47.97	13.84	47.97	0.13
28	germacrene D	26.55	0.00	207.43	46.93	207.43	0.58



20

22.615

23.637 - beta caryophyllene

24.927 - alpha humulene

25.965

26.146

26.554 - germacrene D

30

40

50

60

70

min