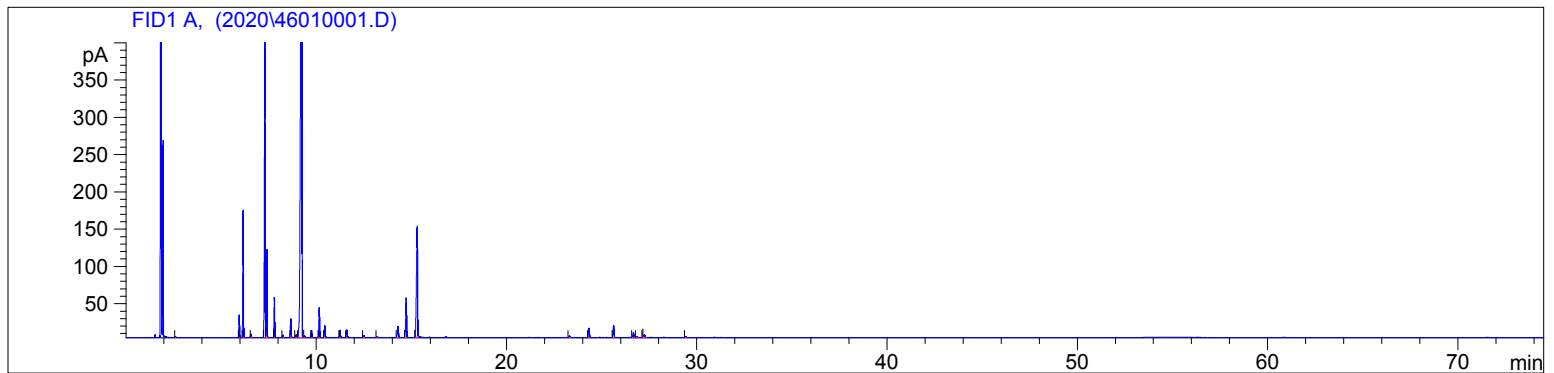


4601-IAZK

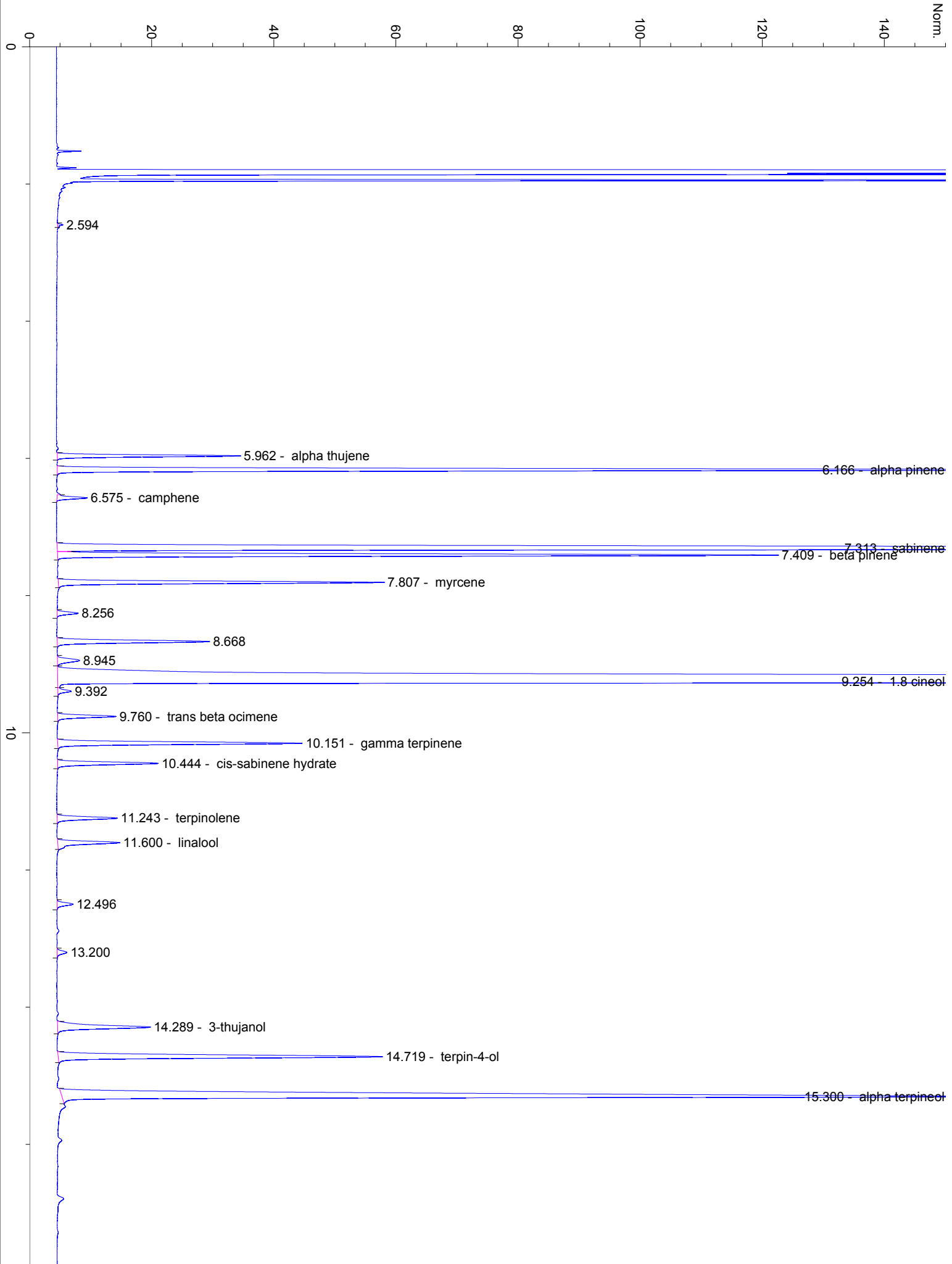
Instrument 6890

C:\HPCHEM\2\DATA\2021\  
46010001.DRavintsara Organic  
4601-IAZK  
Madagascar  
Cinnamomum camphoraHP-5 5% Phenyl Methyl Siloxane  
30.000m  
250.000um  
0.250umSample/Solvent: 0.06/0.50g  
Injection Amount: 0.2uL  
20:1 Split Ratio

-&gt;

9/10/2021 4:05:13 PM  
9/10/2021 4:05:13 PM9/10/2021  
5:41:33 PM

#	Compound Name	Meas. Ret.	Amount	Response	Height	Area	Area %
1		2.59	100.00	1.44	0.88	1.44	0.02
2	alpha thujene	5.96	100.00	65.33	29.99	65.33	0.89
3	alpha pinene	6.17	100.00	386.35	170.55	386.35	5.25
4	camphene	6.58	100.00	12.02	4.98	12.02	0.16
5	sabinene	7.31	100.00	1089.45	400.11	1089.45	14.79
6	beta pinene	7.41	100.00	277.80	118.01	277.80	3.77
7	myrcene	7.81	100.00	130.14	53.33	130.14	1.77
8		8.26	100.00	9.10	3.45	9.10	0.12
9		8.67	100.00	69.42	24.93	69.42	0.94
10		8.94	100.00	13.35	3.61	13.35	0.18
11	1.8 cineol	9.25	100.00	4077.76	882.63	4077.76	55.37
12		9.39	100.00	6.25	2.20	6.25	0.08
13	trans beta ocimene	9.76	100.00	25.55	9.54	25.55	0.35
14	gamma terpinene	10.15	100.00	109.22	40.03	109.22	1.48
15	cis-sabinene hydrate	10.44	100.00	46.40	16.48	46.40	0.63
16	terpinolene	11.24	100.00	28.81	9.86	28.81	0.39
17	linalool	11.60	100.00	32.63	10.15	32.63	0.44
18		12.50	100.00	8.20	2.64	8.20	0.11
19		13.20	100.00	5.19	1.60	5.19	0.07
20	3-thujanol	14.29	100.00	55.24	15.16	55.24	0.75
21	terpin-4-ol	14.72	100.00	171.70	53.08	171.70	2.33
22	alpha terpineol	15.30	100.00	581.78	148.25	581.78	7.90
23		23.30	100.00	7.31	2.13	7.31	0.10
24	beta caryophyllene	24.33	100.00	43.61	12.38	43.61	0.59
25	alpha humulene	25.62	100.00	56.63	16.01	56.63	0.77
26		26.66	100.00	23.64	6.78	23.64	0.32
27		26.85	100.00	4.27	1.24	4.27	0.06
28		27.17	100.00	2.22	1.86	2.22	0.03
29	germacrene D	27.24	100.00	18.58	4.01	18.58	0.25
30		29.42	100.00	4.99	1.40	4.99	0.07



20

30

23.301

24.326 - beta caryophyllene

25.617 - alpha humulene

26.660

26.846

27.239 - germacrene D

27.539  
27.575  
27.608  
27.648  
27.688

29.422

40

50

60

70

min