

Ravintsara Org

HP-5 5% Phenyl Methyl Siloxane

4601-KKZEX

30.000m

Madagascar

250.000um

Cinnamomum camphora

0.250um

Sample/Solvent: 0.05g/0.50g

Injection Amount: 0.2uL

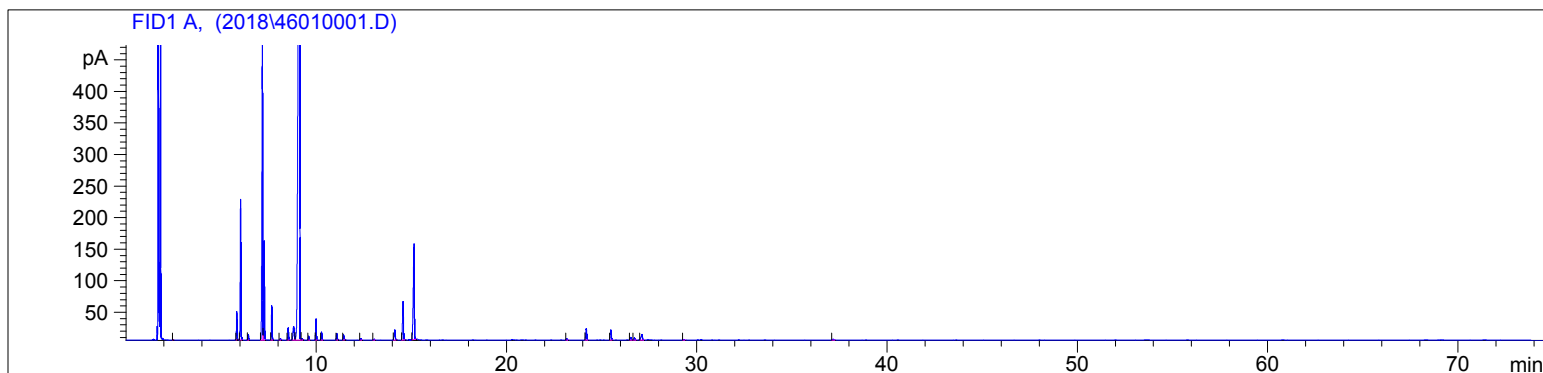
20:1 Split Ratio

11/29/2018 9:36:30 AM

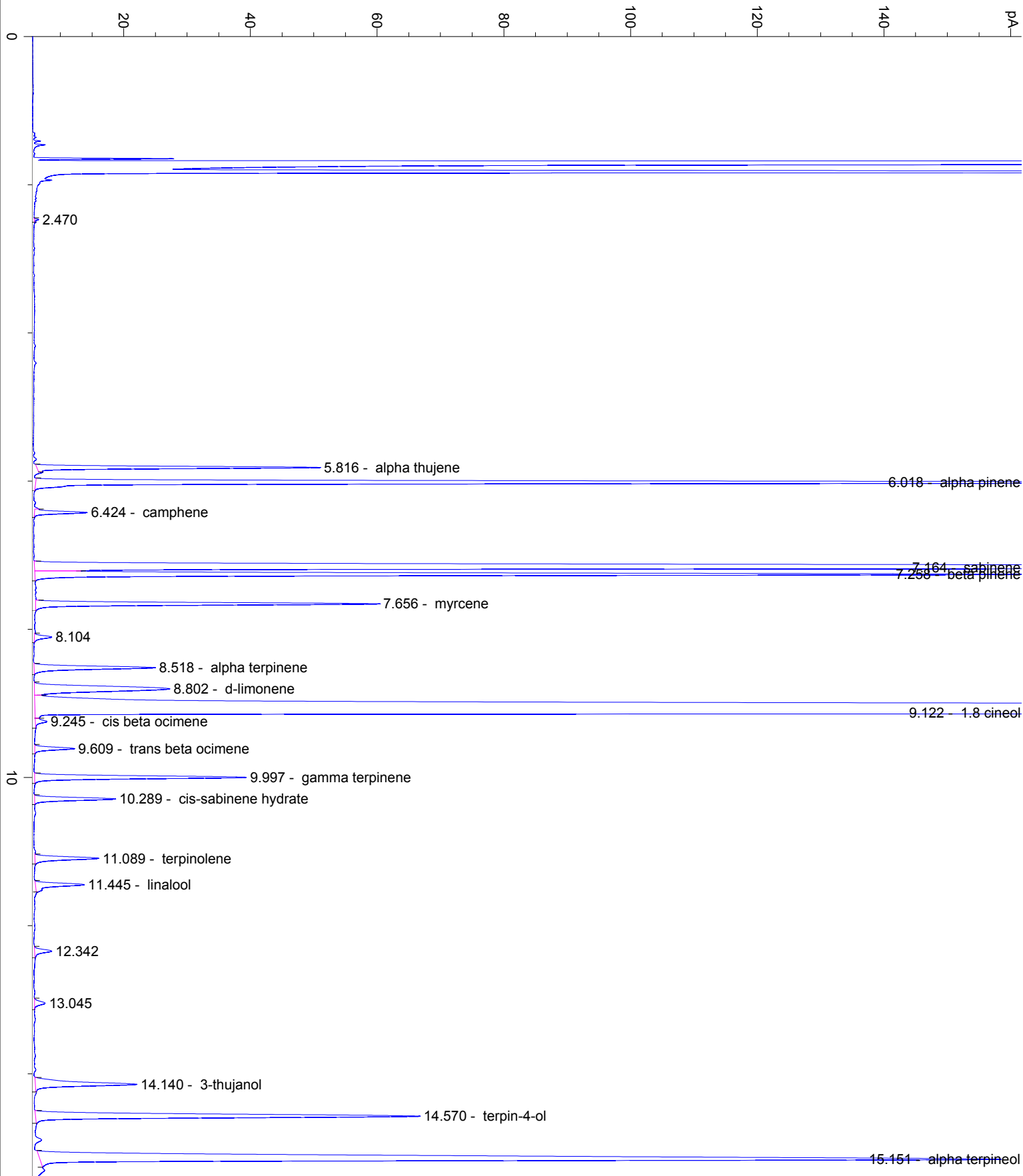
11/29/2018

11/29/2018 9:36:30 AM

11:07:14 AM



#	Compound Name	Meas. Ret.	Amount	Response	Height	Area	Area %
1		2.47	100.00	1.12	0.70	1.12	0.01
2	alpha thujene	5.82	100.00	97.80	44.73	97.80	0.99
3	alpha pinene	6.02	100.00	512.92	222.30	512.92	5.20
4	camphene	6.42	100.00	20.14	8.31	20.14	0.20
5	sabinene	7.16	100.00	1323.10	473.19	1323.10	13.42
6	beta pinene	7.26	100.00	369.58	156.71	369.58	3.75
7	myrcene	7.66	100.00	133.96	54.27	133.96	1.36
8		8.10	100.00	7.89	2.74	7.89	0.08
9	alpha terpinene	8.52	100.00	57.91	19.13	57.91	0.59
10	d-limonene	8.80	100.00	101.34	21.34	101.34	1.03
11	1.8 cineol	9.12	100.00	5927.00	1117.13	5927.00	60.13
12	cis beta ocimene	9.24	100.00	5.92	1.83	5.92	0.06
13	trans beta ocimene	9.61	100.00	16.67	6.27	16.67	0.17
14	gamma terpinene	10.00	100.00	94.21	33.42	94.21	0.96
15	cis-sabinene hydrate	10.29	100.00	36.02	12.77	36.02	0.37
16	terpinolene	11.09	100.00	30.83	10.08	30.83	0.31
17	linalool	11.45	100.00	25.40	7.70	25.40	0.26
18		12.34	100.00	8.80	2.69	8.80	0.09
19		13.05	100.00	5.93	1.69	5.93	0.06
20	3-thujanol	14.14	100.00	60.14	16.03	60.14	0.61
21	terpin-4-ol	14.57	100.00	200.30	60.67	200.30	2.03
22	alpha terpineol	15.15	100.00	604.61	151.54	604.61	6.13
23		23.17	100.00	7.88	2.30	7.88	0.08
24	beta caryophyllene	24.20	100.00	64.92	18.11	64.92	0.66
25	alpha humulene	25.50	100.00	58.93	16.24	58.93	0.60
26		26.54	100.00	15.66	4.33	15.66	0.16
27		26.73	100.00	13.16	3.55	13.16	0.13
28	germacrene D	27.12	100.00	42.63	8.82	42.63	0.43
29		29.31	100.00	4.40	1.25	4.40	0.04
30		37.17	100.00	7.18	1.61	7.18	0.07



20

23.173

24.199 - beta caryophyllene

25.495 - alpha humulene

26.541

26.727

27.124 - germacrene D

29.310

30

40

50

60

70

min