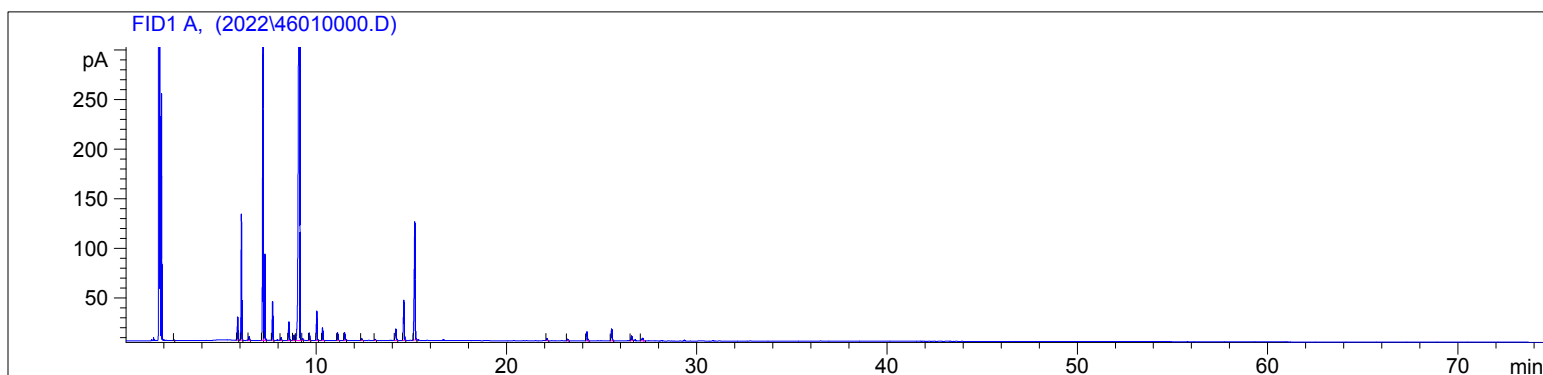


4601

Instrument 6890

C:\HPCHEM\2\DATA\2022\
46010000.DRavintsara
4601-LZDKHP-5 5% Phenyl Methyl Siloxane
30.000m
250.000um
0.250umCinnamomum camphora
Sample/Solvent Ratio: 0.03g/0.51g
Injection Amount: 0.2uL
15:1 Split Ratio8/24/2022 9:39:45 AM
8/24/2022 9:39:45 AM8/24/2022
11:26:13 AM

#	Compound Name	Meas. Ret.	Amount	Response	Height	Area	Area %
1		2.52	0.00	1.21	0.76	1.21	0.02
2	alpha thujene	5.86	0.00	51.09	23.28	51.09	0.93
3	alpha pinene	6.06	0.00	286.64	126.52	286.64	5.23
4	camphene	6.47	0.00	8.89	3.68	8.89	0.16
5	sabinene	7.20	0.00	793.61	302.74	793.61	14.49
6	beta pinene	7.29	0.00	205.88	86.94	205.88	3.76
7	myrcene	7.70	0.00	95.40	39.07	95.40	1.74
8		8.14	0.00	7.48	2.83	7.48	0.14
9		8.55	0.00	51.46	18.59	51.46	0.94
10		8.83	0.00	18.66	5.35	18.66	0.34
11	1.8 cineol	9.12	0.00	3031.64	722.49	3031.64	55.34
12		9.28	0.00	4.51	1.68	4.51	0.08
13	trans beta ocimnene	9.65	0.00	19.03	7.29	19.03	0.35
14	gamma terpinene	10.04	0.00	81.30	29.61	81.30	1.48
15	cis sabinene hydrate	10.34	0.00	35.43	12.58	35.43	0.65
16	terpinolene	11.13	0.00	22.77	7.74	22.77	0.42
17	linalool	11.50	0.00	24.87	7.64	24.87	0.45
18		12.39	0.00	5.81	1.91	5.81	0.11
19		13.10	0.00	3.76	1.16	3.76	0.07
20	3-thujanol	14.19	0.00	41.45	11.50	41.45	0.76
21	terpin-4-ol	14.61	0.00	129.97	40.63	129.97	2.37
22	alpha terpineol	15.19	0.00	437.75	118.93	437.75	7.99
23		22.14	0.00	7.16	2.21	7.16	0.13
24		23.21	0.00	5.73	1.66	5.73	0.10
25	beta caryophyllene	24.24	0.00	32.10	9.08	32.10	0.59
26	alpha humulene	25.53	0.00	43.84	11.87	43.84	0.80
27		26.58	0.00	17.36	4.65	17.36	0.32
28	germacrene D	27.16	0.00	13.86	2.56	13.86	0.25



20



22.141

23.212

24.236 - beta caryophyllene

25.534 - alpha humulene

26.580

27.160 - germacrene D

30

40

50

