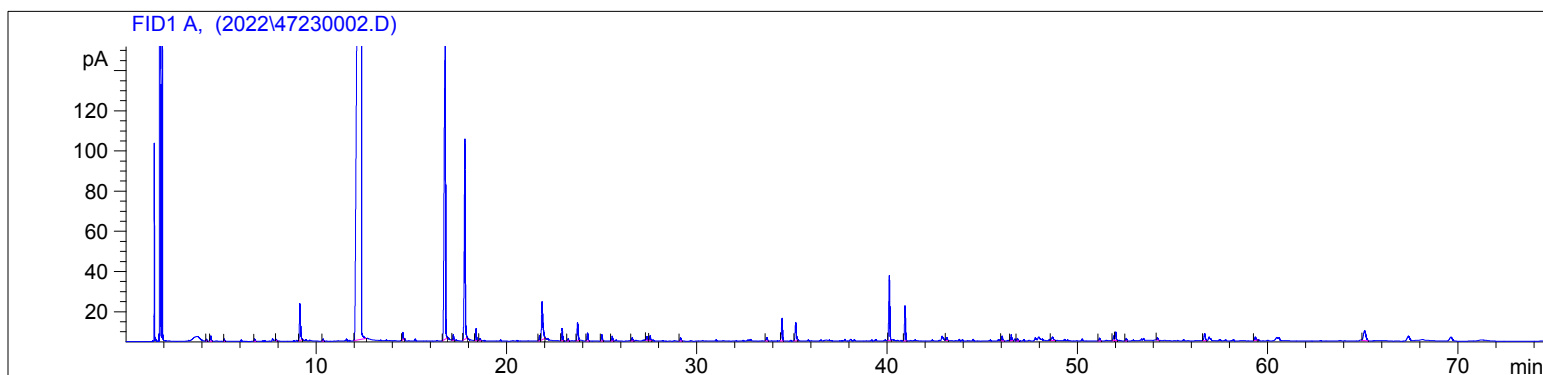


Rose Absolute ORG
4723-LABL
Bulgaria
Rosa damascena
Injection Amount: 0.2uL
15:1 Split Ratio

HP-5 5% Phenyl Methyl Siloxane
30.000m
250.000um
0.250um

12/15/2022 11:56:02 AM
12/15/2022 11:56:02 AM

12/15/2022
2:05:54 PM



#	Compound Name	Meas. Ret.	Amount	Response	Height	Area	Area %
1		4.23	0.00	1.87	0.90	1.87	0.03
2		4.46	0.00	7.97	2.59	7.97	0.11
3		5.17	0.00	2.62	1.09	2.62	0.04
4		6.77	0.00	3.46	1.14	3.46	0.05
5		7.91	0.00	1.77	0.72	1.77	0.02
6	benzyl alcohol	9.15	0.00	70.91	18.41	70.91	0.97
7		10.35	0.00	3.62	1.10	3.62	0.05
8	2-phenylethyl alcohol	12.36	0.00	5426.69	502.19	5426.69	74.15
9		14.54	0.00	11.61	3.76	11.61	0.16
10	citronellol	16.77	0.00	752.26	151.90	752.26	10.28
11		17.19	0.00	9.17	2.86	9.17	0.13
12	geraniol	17.81	0.00	369.15	99.22	369.15	5.04
13	geranial	18.39	0.00	18.98	5.82	18.98	0.26
14		18.60	0.00	3.30	1.08	3.30	0.05
15		21.72	0.00	8.27	2.65	8.27	0.11
16	eugenol	21.86	0.00	94.58	19.08	94.58	1.29
17	geranyl acetate	22.92	0.00	20.77	6.08	20.77	0.28
18		23.23	0.00	3.32	1.04	3.32	0.05
19	methyl eugneol	23.73	0.00	36.14	8.93	36.14	0.49
20	beta caryophyllene	24.25	0.00	13.79	3.91	13.79	0.19
21		25.00	0.00	11.00	3.13	11.00	0.15
22		25.55	0.00	8.70	2.41	8.70	0.12
23		26.60	0.00	5.25	1.50	5.25	0.07
24		27.37	0.00	5.61	1.78	5.61	0.08
25		27.54	0.00	7.79	2.29	7.79	0.11
26		29.14	0.00	6.37	1.67	6.37	0.09
27		33.67	0.00	7.26	1.68	7.26	0.10
28	geranyl tiglate	34.48	0.00	41.67	11.32	41.67	0.57
29		35.19	0.00	38.14	8.93	38.14	0.52
30	(Z,E)-farnesyl acetate	40.11	0.00	116.72	32.27	116.72	1.59
31	(E,E)-farnesyl acetate	40.94	0.00	61.60	17.46	61.60	0.84
32		43.13	0.00	5.26	1.48	5.26	0.07
33		46.04	0.00	8.38	2.26	8.38	0.11
34		46.52	0.00	10.04	2.93	10.04	0.14
35		46.84	0.00	4.27	1.27	4.27	0.06
36		48.69	0.00	12.23	1.73	12.23	0.17
37		51.16	0.00	4.76	1.30	4.76	0.07

5101

Instrument 6890

C:\HPCHEM\2\DATA\2022\
47230002.D

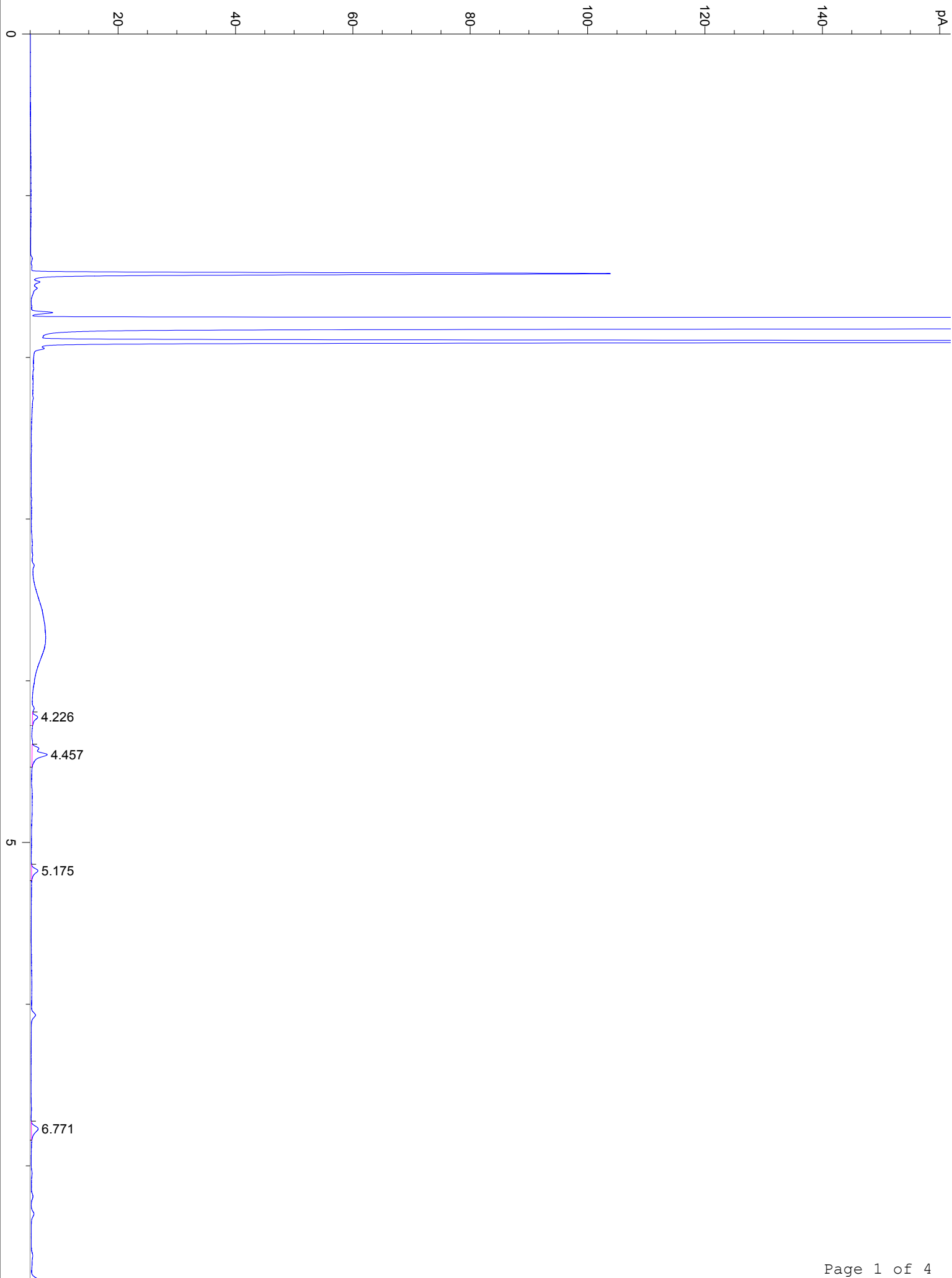
Rose Absolute ORG
4723-LABL
Bulgaria
Rosa damascena
Injection Amount: 0.2uL
15:1 Split Ratio

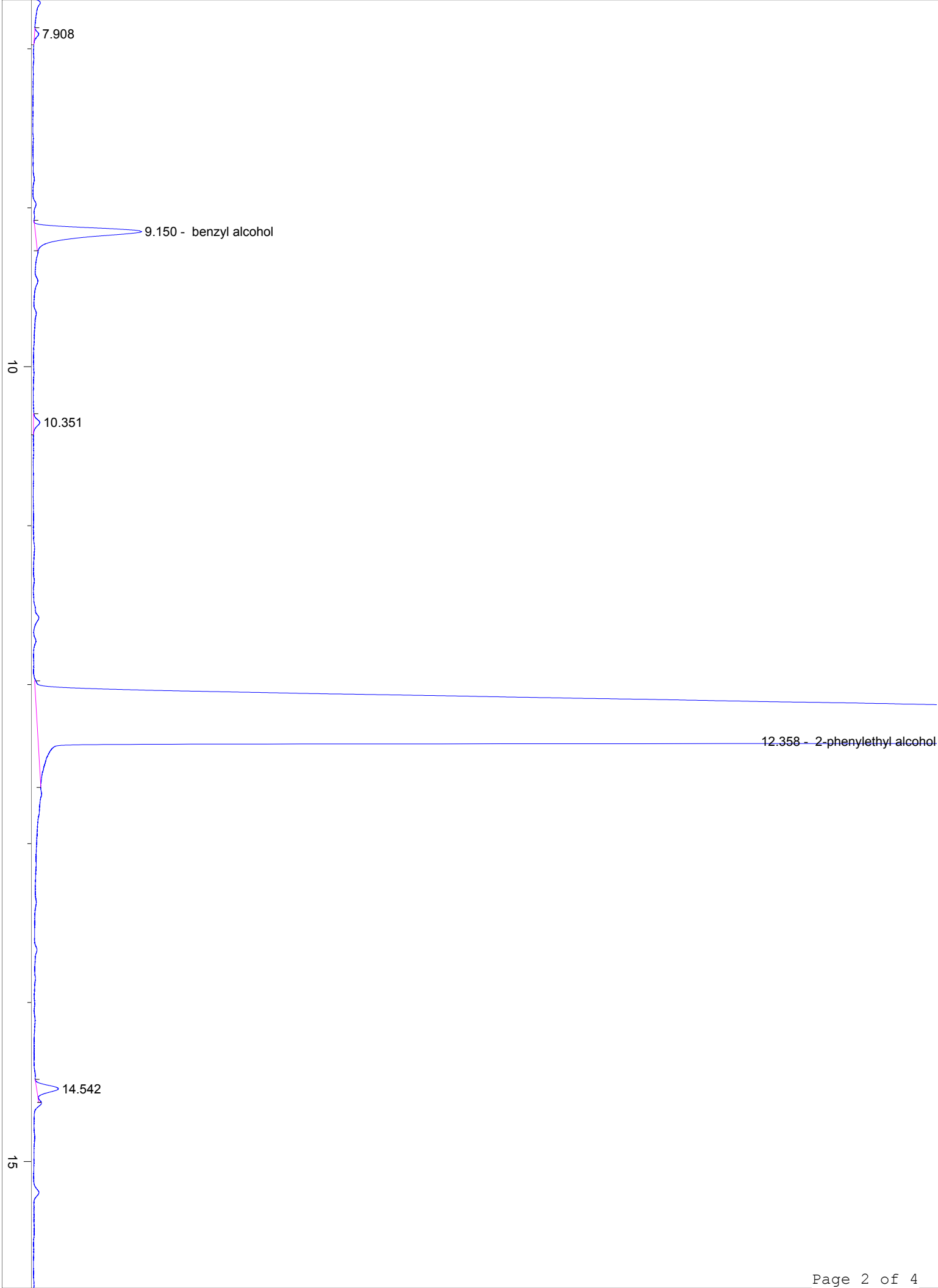
HP-5 5% Phenyl Methyl Siloxane
30.000m
250.000um
0.250um

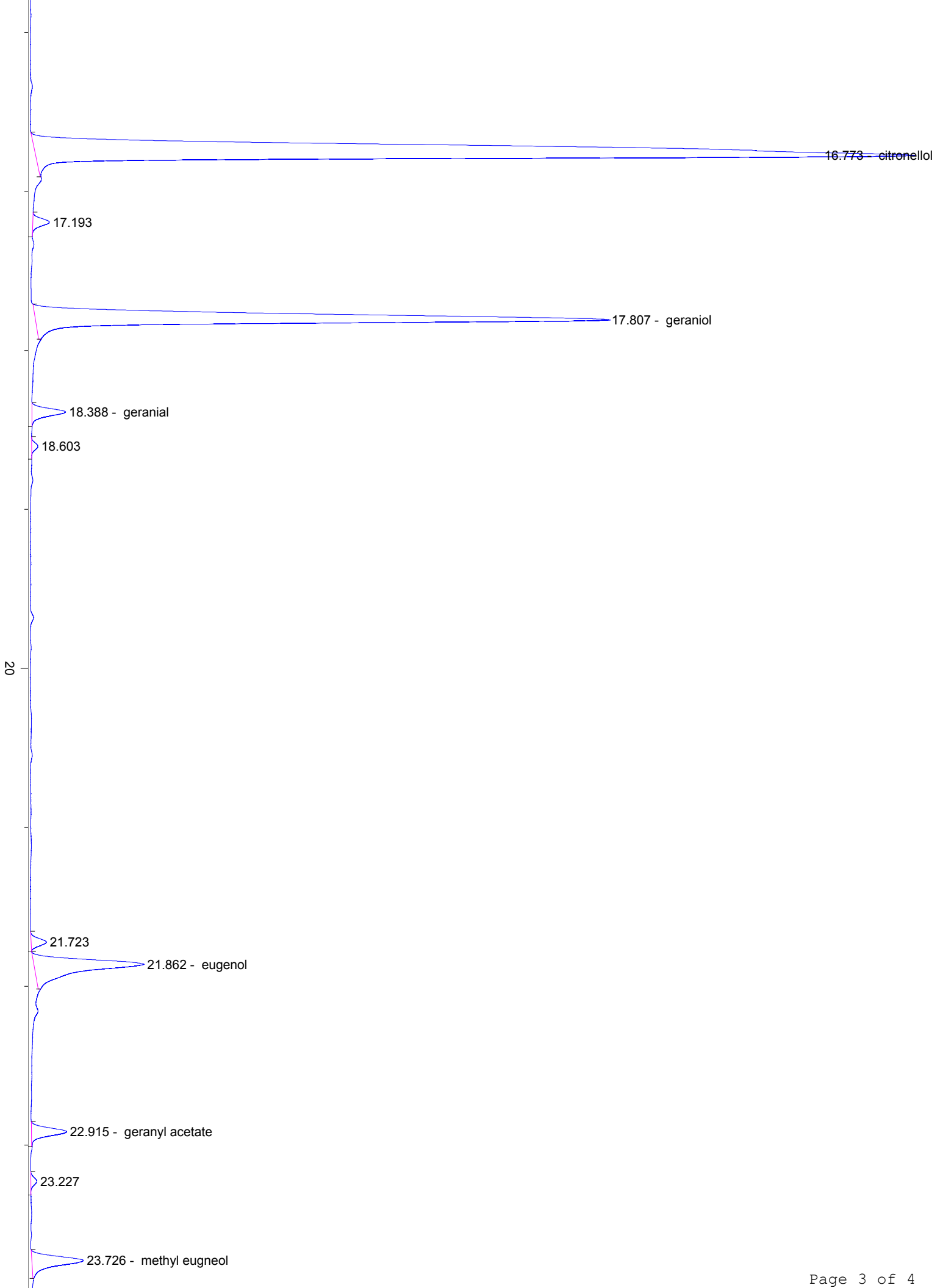
12/15/2022 11:56:02 AM
12/15/2022 11:56:02 AM

12/15/2022
2:05:54 PM

#	Compound Name	Meas. Ret.	Amount	Response	Height	Area	Area %
38		51.91	0.00	9.72	2.38	9.72	0.13
39		52.01	0.00	16.19	4.33	16.19	0.22
40		52.57	0.00	4.32	1.20	4.32	0.06
41		54.20	0.00	4.70	1.27	4.70	0.06
42		56.68	0.00	17.34	3.56	17.34	0.24
43		59.34	0.00	8.69	1.62	8.69	0.12
44		65.09	0.00	42.01	4.76	42.01	0.57







24.250 - beta caryophyllene
25
25.004
25.548
26.596
27.372
27.539
29.138
30
min