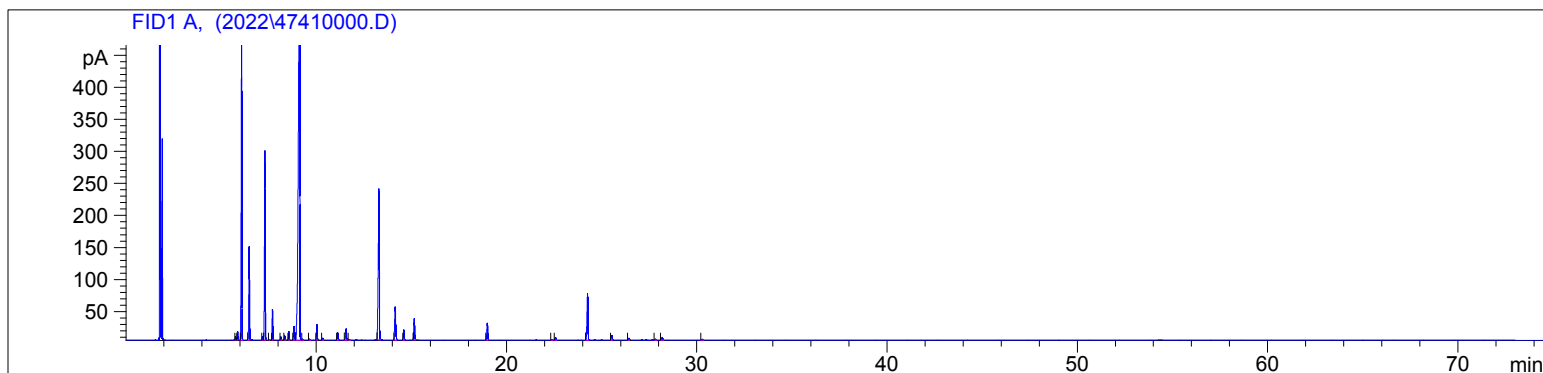


4741

Instrument 6890

C:\HPCHEM\2\DATA\2022\
47410000.DRosemary 1.8 Cineol ORG
4741-AABN
Tunisia
Rosemarinus officinalis
Injection Amount: 0.2uL
15:1 Split RatioHP-5 5% Phenyl Methyl Siloxane
30.000m
250.000um
0.250um1/13/2023 11:18:01 AM
1/13/2023 11:18:01 AM1/13/2023
1:29:17 PM

#	Compound Name	Meas. Ret.	Amount	Response	Height	Area	Area %
1	tricyclene	5.76	0.00	12.37	5.66	12.37	0.15
2	alpha thujene	5.87	0.00	30.74	13.91	30.74	0.38
3	alpha pinene	6.09	0.00	1115.54	465.90	1115.54	13.75
4	camphene	6.49	0.00	352.00	146.27	352.00	4.34
5	sabinene	7.19	0.00	14.08	5.56	14.08	0.17
6	beta pinene	7.31	0.00	763.15	295.74	763.15	9.40
7		7.54	0.00	3.22	1.21	3.22	0.04
8	myrcene	7.71	0.00	116.33	47.66	116.33	1.43
9	alpha phellandrene	8.15	0.00	14.60	5.22	14.60	0.18
10	alpha terpinene	8.35	0.00	18.26	6.82	18.26	0.22
11	para cymene	8.56	0.00	37.52	13.67	37.52	0.46
12	d-limonene	8.84	0.00	82.24	21.81	82.24	1.01
13	1.8 cineol	9.14	0.00	3709.22	796.66	3709.22	45.70
14	trans beta ocimene	9.29	0.00	4.69	1.62	4.69	0.06
15	gamma terpinene	9.66	0.00	4.76	1.80	4.76	0.06
16		10.04	0.00	65.67	24.46	65.67	0.81
17	cis-sabinene hydrate	10.35	0.00	9.02	3.14	9.02	0.11
18	terpinolene	11.14	0.00	34.72	11.49	34.72	0.43
19	linalool	11.58	0.00	53.52	17.43	53.52	0.66
20		11.74	0.00	4.23	1.36	4.23	0.05
21	camphor	13.31	0.00	890.68	235.31	890.68	10.97
22	borneol	14.16	0.00	190.92	51.86	190.92	2.35
23	terpin-4-ol	14.61	0.00	50.54	16.19	50.54	0.62
24	alpha terpineol	15.16	0.00	107.80	33.36	107.80	1.33
25	bornyl acetate	18.98	0.00	88.82	26.64	88.82	1.09
26		22.39	0.00	4.03	1.17	4.03	0.05
27		22.57	0.00	14.53	4.33	14.53	0.18
28	beta caryophyllene	24.25	0.00	257.07	72.25	257.07	3.17
29	alpha humulene	25.53	0.00	26.58	7.48	26.58	0.33
30		26.43	0.00	10.79	3.22	10.79	0.13
31		27.82	0.00	6.20	1.76	6.20	0.08
32		28.18	0.00	16.73	4.38	16.73	0.21
33	caryophyllene alcohol	30.27	0.00	5.22	1.40	5.22	0.06

