

4741-BZFB

Instrument 6890

C:\HPCHEM\2\DATA\2024\  
47410000.D

Rosemary Cineol 1.8 Org

HP-5 5% Phenyl Methyl Siloxane

4741-BZfb

30.000m

China

250.000um

Rosmarinus Officinalis

0.250um

Sample/Solvent: 0.05g/0.52g

Injection Amount: 0.2uL

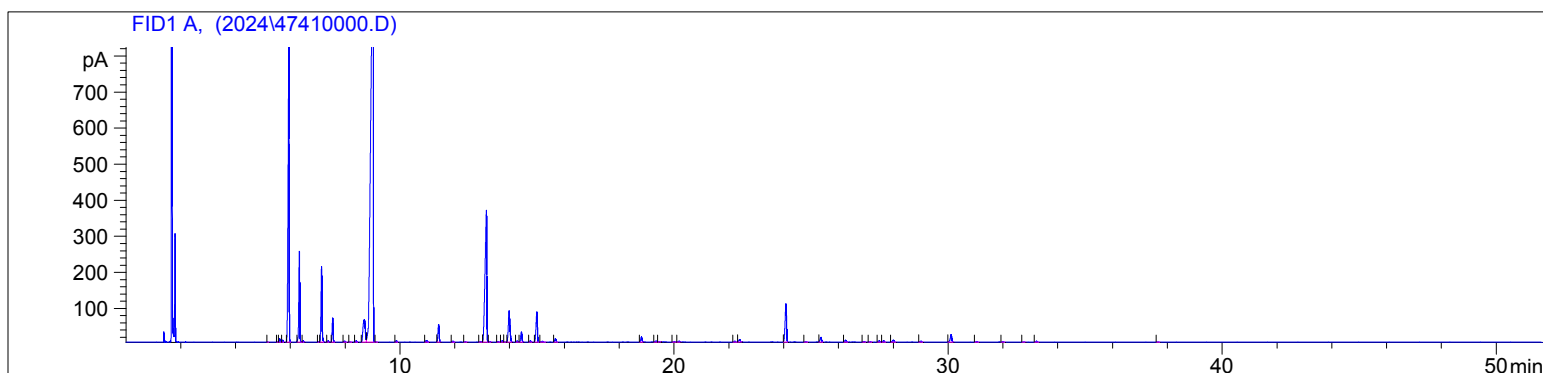
20:1 Split Ratio

2/25/2025 10:45:32 AM

2/25/2025

2/25/2025 10:45:32 AM

12:27:51 PM



#	Compound Name	Meas. Ret.	Amount	Response	Height	Area	Area %
1		5.17	0.00	1.33	0.65	1.33	0.01
2		5.53	0.00	1.77	0.84	1.77	0.01
3	Tricyclene	5.61	0.00	21.55	9.72	21.55	0.15
4	Alpha Thujene	5.72	0.00	12.58	5.58	12.58	0.08
5	Alpha Pinene	5.95	0.00	2240.17	824.26	2240.17	15.08
6	Camphene	6.33	0.00	611.72	252.09	611.72	4.12
7		6.47	0.00	8.44	3.68	8.44	0.06
8		7.03	0.00	3.25	1.35	3.25	0.02
9	Beta Pinene	7.14	0.00	542.83	208.85	542.83	3.65
10		7.38	0.00	8.93	3.53	8.93	0.06
11	Myrcene	7.55	0.00	163.44	66.77	163.44	1.10
12	Alpha Phellandrene	7.98	0.00	9.34	2.81	9.34	0.06
13		8.19	0.00	2.65	0.95	2.65	0.02
14	Alpha Terpinene	8.40	0.00	11.83	3.96	11.83	0.08
15	Para Cymene	8.70	0.00	359.59	62.09	359.59	2.42
16	1.8 Cineol	9.02	0.00	7453.95	1256.64	7453.95	50.18
17	Cis-Beta Ocimene	9.13	0.00	2.88	1.00	2.88	0.02
18	Gamma Terpinene	9.87	0.00	12.05	4.47	12.05	0.08
19	Terpinolene	10.97	0.00	18.41	4.74	18.41	0.12
20	Linalool	11.42	0.00	143.64	48.06	143.64	0.97
21		11.93	0.00	9.06	2.92	9.06	0.06
22		12.39	0.00	4.25	1.20	4.25	0.03
23		12.95	0.00	8.39	2.07	8.39	0.06
24	Camphor	13.16	0.00	1645.37	365.29	1645.37	11.08
25		13.27	0.00	5.84	1.89	5.84	0.04
26		13.58	0.00	6.73	1.95	6.73	0.05
27		13.73	0.00	11.98	3.86	11.98	0.08
28		13.81	0.00	3.29	1.14	3.29	0.02
29	Borneol	13.99	0.00	348.83	86.40	348.83	2.35
30		14.28	0.00	9.35	2.98	9.35	0.06
31	Terpin-4-ol	14.43	0.00	87.54	27.85	87.54	0.59
32		14.76	0.00	10.59	3.21	10.59	0.07
33	Alpha Terpineol	15.00	0.00	284.54	83.47	284.54	1.92
34		15.20	0.00	11.91	2.54	11.91	0.08
35		15.67	0.00	31.90	9.74	31.90	0.21
36	Bornyl Acetate	18.80	0.00	46.86	14.15	46.86	0.32
37		19.33	0.00	11.22	3.01	11.22	0.08
38		19.46	0.00	6.11	1.55	6.11	0.04
39		20.00	0.00	6.26	1.47	6.26	0.04
40		20.17	0.00	10.19	2.89	10.19	0.07

4741-BZFB

Instrument 6890

C:\HPCHEM\2\DATA\2024\  
47410000.D

Rosemary Cineol 1.8 Org  
4741-BZfB  
China  
Rosmarinus Officinalis  
Sample/Solvent: 0.05g/0.52g  
Injection Amount: 0.2uL  
20:1 Split Ratio

HP-5 5% Phenyl Methyl Siloxane  
30.000m  
250.000um  
0.250um

2/25/2025 10:45:32 AM  
2/25/2025 10:45:32 AM

2/25/2025  
12:27:51 PM

#	Compound Name	Meas. Ret.	Amount	Response	Height	Area	Area %
41		22.21	0.00	8.12	2.33	8.12	0.05
42		22.38	0.00	25.08	6.87	25.08	0.17
43	Beta Caryophyllene	24.08	0.00	380.38	105.66	380.38	2.56
44		24.80	0.00	5.21	1.38	5.21	0.04
45	Alpha Humulene	25.35	0.00	45.69	12.99	45.69	0.31
46	Germacrene D	26.25	0.00	17.96	5.07	17.96	0.12
47		26.93	0.00	6.33	1.65	6.33	0.04
48		27.15	0.00	4.60	1.35	4.60	0.03
49		27.48	0.00	12.42	3.77	12.42	0.08
50		27.64	0.00	11.70	3.24	11.70	0.08
51		28.00	0.00	23.97	5.60	23.97	0.16
52		29.00	0.00	9.35	2.37	9.35	0.06
53		30.10	0.00	83.48	20.98	83.48	0.56
54		31.03	0.00	7.17	1.99	7.17	0.05
55		31.99	0.00	5.90	1.66	5.90	0.04
56		32.75	0.00	4.66	1.26	4.66	0.03
57		33.22	0.00	9.39	2.61	9.39	0.06
58		37.65	0.00	3.68	1.08	3.68	0.02

