

4741

Instrument 6890

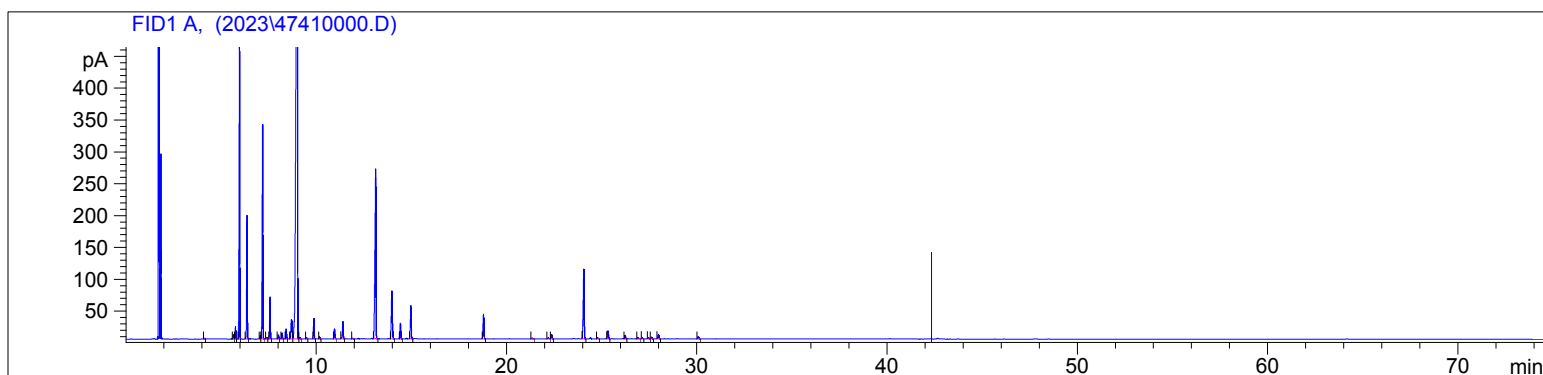
C:\HPCHEM\2\DATA\2023\
47410000.D

Rosemary 1.8 Cineole Organic
EO4741-FAEN
Tunisia
Rosmarinus officinalis
Sample/Solvent: 0.08g/0.53g
Injection Amount: 0.2uL
20:1 Split Ratio

HP-5 5% Phenyl Methyl Siloxane
30.000m
250.000um
0.250um

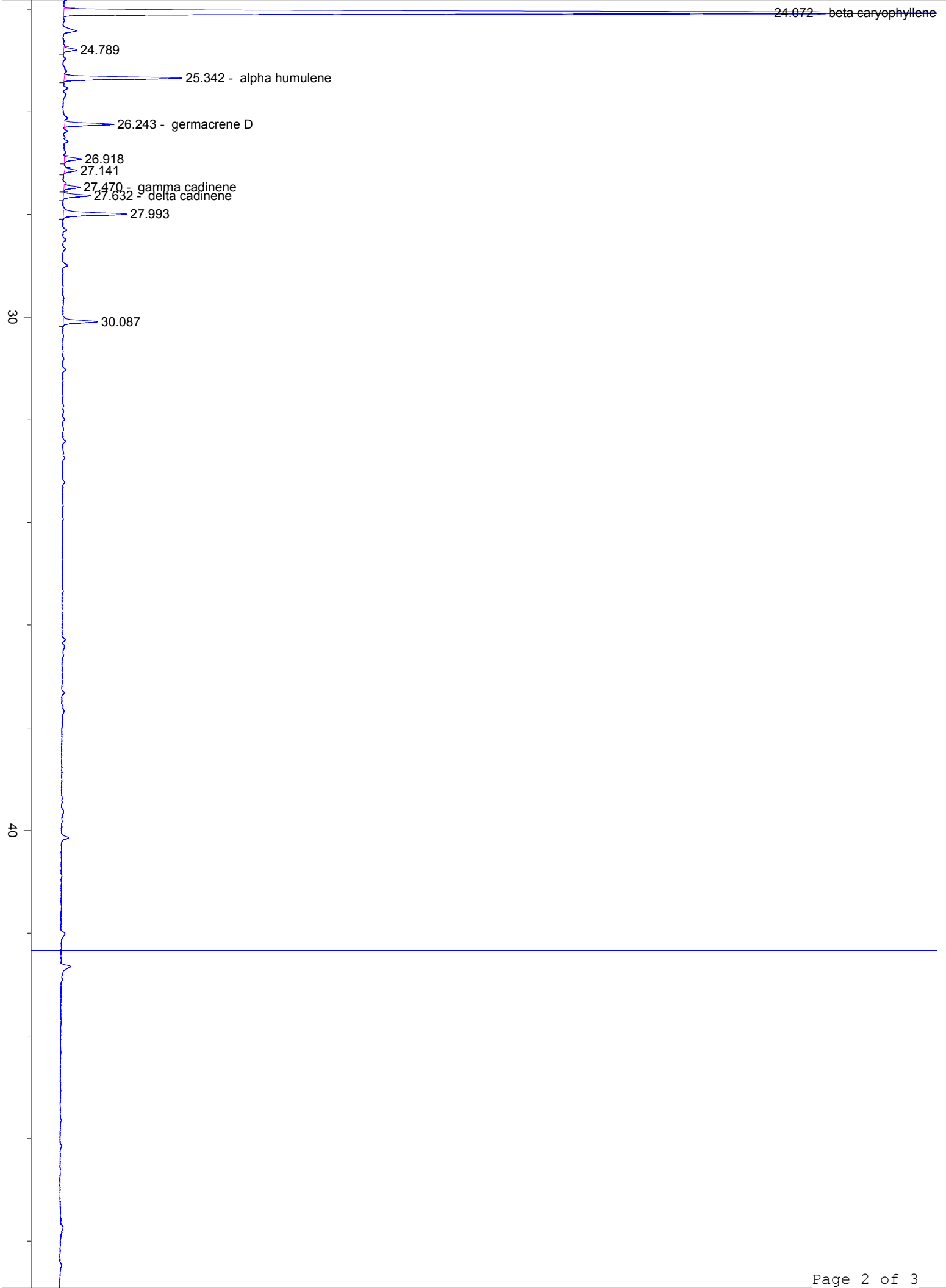
6/16/2023 9:17:20 AM
6/16/2023 9:17:20 AM

6/16/2023
10:45:56 AM



#	Compound Name	Meas. Ret.	Amount	Response	Height	Area	Area %
1		4.12	0.00	2.18	1.21	2.18	0.02
2	tricyclene	5.64	0.00	14.95	7.08	14.95	0.14
3	alpha thujene	5.75	0.00	40.99	19.09	40.99	0.40
4	alpha pinene	5.96	0.00	1089.94	464.28	1089.94	10.57
5	camphene	6.35	0.00	454.55	194.10	454.55	4.41
6	sabinene	7.05	0.00	14.01	5.57	14.01	0.14
7	beta pinene	7.17	0.00	866.70	336.06	866.70	8.40
8		7.40	0.00	5.64	2.29	5.64	0.05
9	myrcene	7.56	0.00	155.05	65.71	155.05	1.50
10	alpha phellandrene	8.00	0.00	17.51	6.25	17.51	0.17
11	alpha terpinene	8.20	0.00	24.70	9.45	24.70	0.24
12		8.41	0.00	42.67	15.53	42.67	0.41
13	para cymene	8.69	0.00	135.29	30.81	135.29	1.31
14	1.8 cineol	9.00	0.00	4942.38	974.13	4942.38	47.92
15	cis-beta ocimene	9.14	0.00	5.96	2.21	5.96	0.06
16	trans-beta ocimene	9.50	0.00	5.53	2.17	5.53	0.05
17	gamma terpinene	9.88	0.00	84.76	32.08	84.76	0.82
18	cis-sabinene hydrate	10.18	0.00	9.47	3.42	9.47	0.09
19	terpinolene	10.97	0.00	45.92	15.85	45.92	0.45
20	linalool	11.41	0.00	83.85	27.02	83.85	0.81
21		11.93	0.00	3.59	1.17	3.59	0.03
22	camphor	13.13	0.00	1044.43	265.43	1044.43	10.13
23	borneol	13.98	0.00	282.00	75.04	282.00	2.73
24	terpin-4-ol	14.43	0.00	77.44	24.78	77.44	0.75
25	alpha terpineol	14.98	0.00	165.11	52.03	165.11	1.60
26	bornyl acetate	18.80	0.00	125.97	38.50	125.97	1.22
27		21.35	0.00	4.99	1.48	4.99	0.05
28		22.20	0.00	6.52	1.86	6.52	0.06
29		22.38	0.00	23.24	6.78	23.24	0.23
30	beta caryophyllene	24.07	0.00	405.41	109.27	405.41	3.93
31		24.79	0.00	4.70	1.39	4.70	0.05
32	alpha humulene	25.34	0.00	43.91	12.63	43.91	0.43
33	germacrene D	26.24	0.00	17.46	5.25	17.46	0.17
34		26.92	0.00	6.55	1.82	6.55	0.06
35		27.14	0.00	4.50	1.31	4.50	0.04
36	gamma cadinene	27.47	0.00	5.81	1.72	5.81	0.06
37	delta cadinene	27.63	0.00	10.14	2.89	10.14	0.10
38		27.99	0.00	26.04	6.78	26.04	0.25
39		30.09	0.00	13.47	3.68	13.47	0.13





50

60

70

min