

4741

Instrument 6890

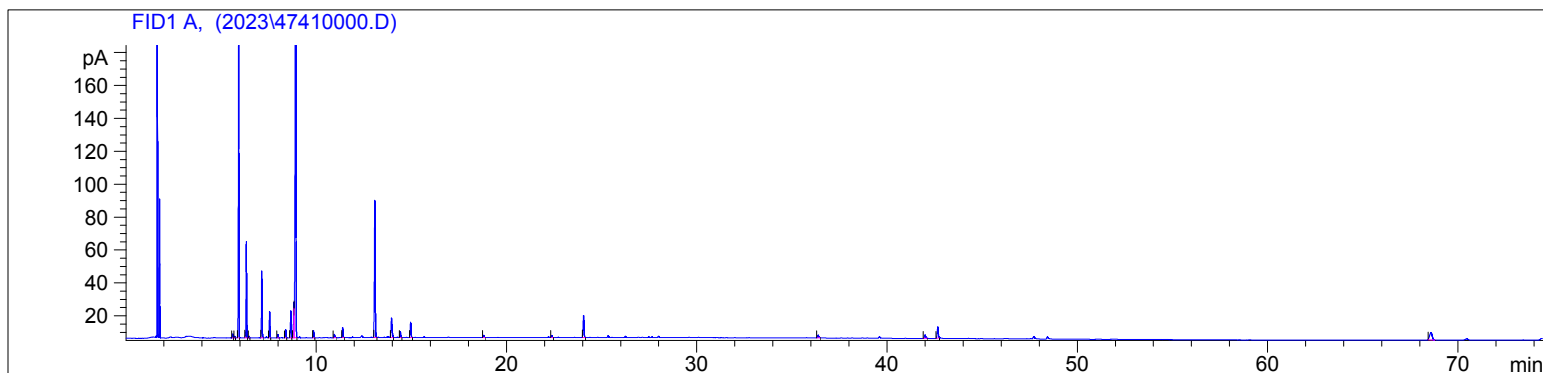
C:\HPCHEM\2\DATA\2023\  
47410000.D

Rosemary 1.8 Cineol Org  
4741-IACN  
Morocco  
Rosmarinus officinalis  
Sample/Solvent: 0.08g/0.53g  
Injection Amount: 0.2uL  
20:1 Split Ratio

HP-5 5% Phenyl Methyl Siloxane  
30.000m  
250.000um  
0.250um

8/15/2023 11:15:43 AM  
8/15/2023 11:15:43 AM

8/15/2023  
1:54:40 PM



#	Compound Name	Meas. Ret.	Amount	Response	Height	Area	Area %
1	tricyclene	5.61	0.00	5.11	2.44	5.11	0.22
2	alpha thujene	5.71	0.00	2.27	1.11	2.27	0.10
3	alpha pinene	5.92	0.00	401.75	184.46	401.75	17.13
4	camphene	6.32	0.00	134.96	58.62	134.96	5.76
5		6.47	0.00	2.10	0.96	2.10	0.09
6	beta pinene	7.13	0.00	99.93	40.54	99.93	4.26
7	myrcene	7.54	0.00	37.23	15.93	37.23	1.59
8	alpha phellandrene	7.98	0.00	5.18	1.97	5.18	0.22
9	alpha terpinene	8.39	0.00	12.59	5.04	12.59	0.54
10		8.65	0.00	43.92	16.33	43.92	1.87
11	para cymene	8.82	0.00	58.14	21.23	58.14	2.48
12	1.8 cineol	8.91	0.00	1014.82	335.95	1014.82	43.28
13	gamma terpinene	9.87	0.00	11.35	4.32	11.35	0.48
14	terpinolene	10.96	0.00	6.86	2.08	6.86	0.29
15	linalool	11.40	0.00	17.59	6.13	17.59	0.75
16	camphor	13.09	0.00	265.86	83.24	265.86	11.34
17	borneol	13.96	0.00	43.13	11.76	43.13	1.84
18	terpinen-4-ol	14.43	0.00	11.40	3.67	11.40	0.49
19	alpha terpineol	14.97	0.00	29.39	9.29	29.39	1.25
20	bornyl acetate	18.80	0.00	4.43	1.37	4.43	0.19
21		22.39	0.00	4.00	1.22	4.00	0.17
22	beta caryophyllene	24.06	0.00	46.52	13.31	46.52	1.98
23		36.39	0.00	6.87	1.63	6.87	0.29
24		41.99	0.00	9.55	2.05	9.55	0.41
25		42.66	0.00	27.47	6.83	27.47	1.17
26		68.57	0.00	42.34	4.52	42.34	1.81

