

4741

Instrument 6890

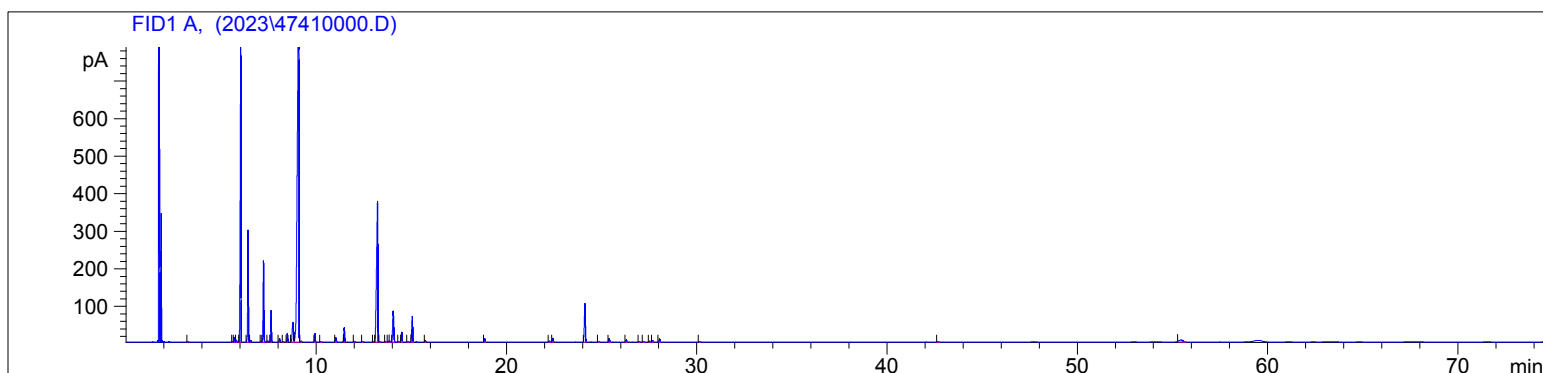
C:\HPCHEM\2\DATA\2023\
47410000.D

Rosemary 1.8 Cineol Org
4741-JABN
Morocco
Rosmarinus officinalis L
Sample/Solvent: 0.05g/0.51g
Injection Amount: 0.2uL
20:1 Split Ratio

HP-5 5% Phenyl Methyl Siloxane
30.000m
250.000um
0.250um

10/12/2023 2:26:10 PM
10/12/2023 2:26:10 PM

10/13/2023
11:15:33 AM



#	Compound Name	Meas. Ret.	Amount	Response	Height	Area	Area %
1		3.23	0.00	2.61	1.50	2.61	0.02
2		5.60	0.00	2.95	1.42	2.95	0.02
3	tricyclene	5.69	0.00	27.91	12.80	27.91	0.21
4	alpha thujene	5.80	0.00	12.25	5.61	12.25	0.09
5	alpha pinene	6.03	0.00	2104.26	789.98	2104.26	15.78
6	camphene	6.41	0.00	719.67	297.87	719.67	5.40
7		6.55	0.00	11.45	5.17	11.45	0.09
8	sabinene	7.10	0.00	3.33	1.39	3.33	0.02
9	beta pinene	7.22	0.00	548.22	216.64	548.22	4.11
10		7.45	0.00	8.81	3.74	8.81	0.07
11	myrcene	7.62	0.00	198.40	83.93	198.40	1.49
12	alpha phellandrene	8.06	0.00	27.18	9.84	27.18	0.20
13	alpha terpinene	8.26	0.00	3.49	1.29	3.49	0.03
14	para cymene	8.47	0.00	65.66	23.28	65.66	0.49
15	d-limonene	8.77	0.00	256.48	51.79	256.48	1.92
16	1.8 cineol	9.08	0.00	6008.81	1099.06	6008.81	45.06
17		9.20	0.00	7.72	3.00	7.72	0.06
18	gamma terpinene	9.94	0.00	62.31	23.25	62.31	0.47
19		10.24	0.00	3.03	1.10	3.03	0.02
20	terpinolene	11.03	0.00	40.18	11.97	40.18	0.30
21	linalool	11.48	0.00	111.62	38.00	111.62	0.84
22		12.00	0.00	8.64	2.74	8.64	0.06
23		12.45	0.00	5.36	1.67	5.36	0.04
24		13.02	0.00	7.61	1.93	7.61	0.06
25	camphor	13.23	0.00	1723.15	375.58	1723.15	12.92
26		13.34	0.00	6.11	1.87	6.11	0.05
27		13.65	0.00	6.13	1.84	6.13	0.05
28		13.80	0.00	7.54	2.51	7.54	0.06
29		13.88	0.00	9.96	3.29	9.96	0.07
30	borneol	14.05	0.00	327.44	82.59	327.44	2.46
31		14.34	0.00	5.67	1.76	5.67	0.04
32	terpin-4-ol	14.50	0.00	84.19	26.85	84.19	0.63
33		14.82	0.00	4.40	1.39	4.40	0.03
34	verbenone	15.06	0.00	227.88	68.85	227.88	1.71
35		15.73	0.00	14.05	4.34	14.05	0.11
36	bornyl acetate	18.86	0.00	32.40	9.87	32.40	0.24
37		22.26	0.00	10.26	2.92	10.26	0.08
38		22.44	0.00	35.53	10.41	35.53	0.27
39	beta caryophyllene	24.13	0.00	377.24	102.79	377.24	2.83
40		24.85	0.00	5.97	1.78	5.97	0.04

4741

Instrument 6890

C:\HPCHEM\2\DATA\2023\
47410000.D

Rosemary 1.8 Cineol Org
4741-JABN
Morocco
Rosmarinus officinalis
Sample/Solvent: 0.05g/0.51g
Injection Amount: 0.2uL
20:1 Split Ratio

HP-5 5% Phenyl Methyl Siloxane
30.000m
250.000um
0.250um

10/12/2023 2:26:10 PM
10/12/2023 2:26:10 PM

10/13/2023
11:15:33 AM

#	Compound Name	Meas. Ret.	Amount	Response	Height	Area	Area %
41	alpha humulene	25.40	0.00	32.47	9.25	32.47	0.24
42		26.30	0.00	20.65	6.15	20.65	0.15
43		26.98	0.00	7.73	2.00	7.73	0.06
44		27.20	0.00	4.95	1.54	4.95	0.04
45		27.52	0.00	10.03	3.01	10.03	0.08
46		27.69	0.00	13.52	3.79	13.52	0.10
47		28.05	0.00	33.55	8.51	33.55	0.25
48		30.14	0.00	8.21	2.08	8.21	0.06
49		42.68	0.00	8.64	1.98	8.64	0.06
50		55.43	0.00	68.10	4.83	68.10	0.51





