

4741-KZEA

Instrument 6890

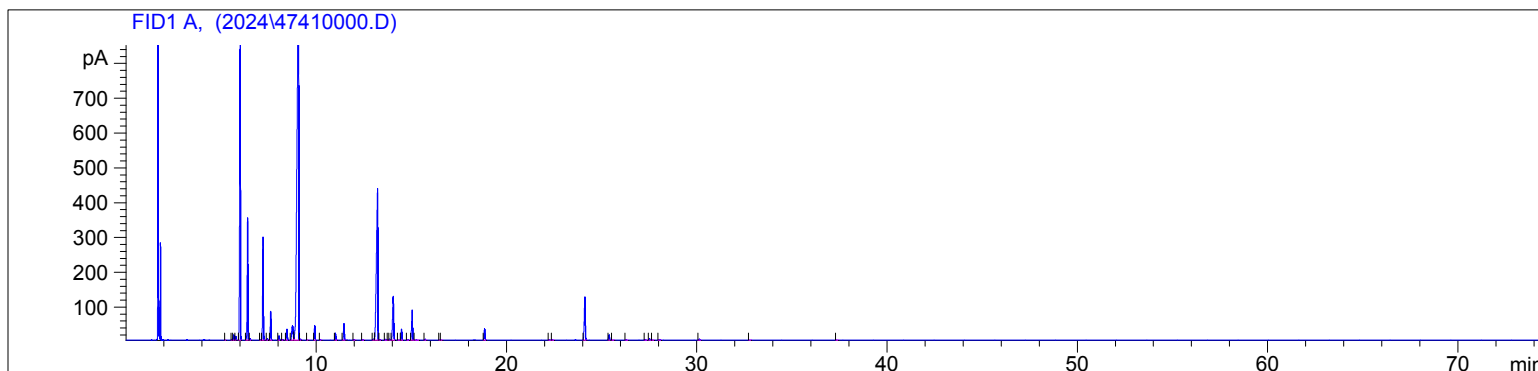
C:\HPCHEM\2\DATA\2024\47410000.D

Rosemary Cineol 1.8 Org
4741-KZEA
Morocco
Rosmarinus Officinalis
Sample/Solvent: 0.06g/0.52g
Injection Amount: 0.2uL
20:1 Split Ratio

HP-5 5% Phenyl Methyl Siloxane
30.000m
250.000um
0.250um

11/6/2024 3:02:04 PM
11/6/2024 3:02:04 PM

11/6/2024
4:36:32 PM



#	Compound Name	Meas. Ret.	Amount	Response	Height	Area	Area %
1		5.22	0.00	1.14	0.56	1.14	0.01
2		5.57	0.00	5.88	2.76	5.88	0.04
3	Tricyclene	5.66	0.00	33.66	15.05	33.66	0.22
4	Alpha Thujene	5.77	0.00	24.87	10.92	24.87	0.16
5	Alpha Pinene	6.00	0.00	2371.98	852.33	2371.98	15.50
6	Camphene	6.39	0.00	855.39	351.10	855.39	5.59
7		6.52	0.00	10.53	4.70	10.53	0.07
8	Sabinene	7.08	0.00	7.22	2.80	7.22	0.05
9	Beta Pinene	7.20	0.00	786.19	295.43	786.19	5.14
10		7.43	0.00	12.74	5.13	12.74	0.08
11	Myrcene	7.60	0.00	203.51	82.88	203.51	1.33
12	Alpha Phellandrene	8.04	0.00	35.31	12.60	35.31	0.23
13	Alpha Terpinene	8.23	0.00	5.68	2.04	5.68	0.04
14	Para Cymene	8.45	0.00	93.29	31.74	93.29	0.61
15	D-Limonene	8.74	0.00	213.74	41.17	213.74	1.40
16	1.8 Cineol	9.06	0.00	6438.40	1147.89	6438.40	42.08
17		9.18	0.00	7.30	2.77	7.30	0.05
18		9.54	0.00	2.29	0.87	2.29	0.01
19	Gamma Terpinene	9.93	0.00	112.48	42.16	112.48	0.74
20		10.22	0.00	3.44	1.23	3.44	0.02
21	Terpinolene	11.01	0.00	63.58	20.00	63.58	0.42
22	Linalool	11.47	0.00	150.11	48.18	150.11	0.98
23		11.99	0.00	7.41	2.34	7.41	0.05
24		12.44	0.00	5.30	1.68	5.30	0.03
25		13.02	0.00	13.11	3.22	13.11	0.09
26	Camphor	13.23	0.00	2190.64	434.93	2190.64	14.32
27		13.33	0.00	6.11	1.90	6.11	0.04
28		13.64	0.00	9.72	2.86	9.72	0.06
29		13.78	0.00	3.81	1.29	3.81	0.02
30		13.86	0.00	8.13	2.64	8.13	0.05
31	Borneol	14.06	0.00	496.20	125.78	496.20	3.24
32		14.33	0.00	3.57	1.03	3.57	0.02
33	Terpin-4-ol	14.49	0.00	98.99	31.37	98.99	0.65
34		14.81	0.00	5.26	1.66	5.26	0.03
35	Verbenone	15.05	0.00	297.67	86.21	297.67	1.95
36		15.25	0.00	7.74	1.62	7.74	0.05
37		15.73	0.00	8.87	2.75	8.87	0.06
38		16.50	0.00	3.56	1.13	3.56	0.02
39		16.57	0.00	4.11	1.13	4.11	0.03
40	Bornyl Acetate	18.86	0.00	104.13	32.66	104.13	0.68

4741-KZEA

Instrument 6890

C:\HPCHEM\2\DATA\2024\
47410000.D

Rosemary Cineol 1.8 Org
4741-KZEA
Morocco
Rosmarinus Officinalis
Sample/Solvent: 0.06g/0.52g
Injection Amount: 0.2uL
20:1 Split Ratio

HP-5 5% Phenyl Methyl Siloxane
30.000m
250.000um
0.250um

11/6/2024 3:02:04 PM
11/6/2024 3:02:04 PM

11/6/2024
4:36:32 PM

#	Compound Name	Meas. Ret.	Amount	Response	Height	Area	Area %
41		22.26	0.00	5.49	1.73	5.49	0.04
42		22.43	0.00	5.42	1.65	5.42	0.04
43	Beta Caryophyllene	24.13	0.00	460.33	123.59	460.33	3.01
44	Alpha Humulene	25.40	0.00	52.79	14.99	52.79	0.35
45		25.59	0.00	2.58	0.88	2.58	0.02
46		26.29	0.00	3.98	1.32	3.98	0.03
47		27.29	0.00	8.51	2.56	8.51	0.06
48		27.52	0.00	13.14	3.93	13.14	0.09
49		27.69	0.00	3.98	1.06	3.98	0.03
50		28.04	0.00	9.93	2.36	9.93	0.06
51		30.14	0.00	13.57	3.49	13.57	0.09
52		32.79	0.00	3.59	0.98	3.59	0.02
53		37.36	0.00	3.70	1.04	3.70	0.02

