

4752

Instrument 6890

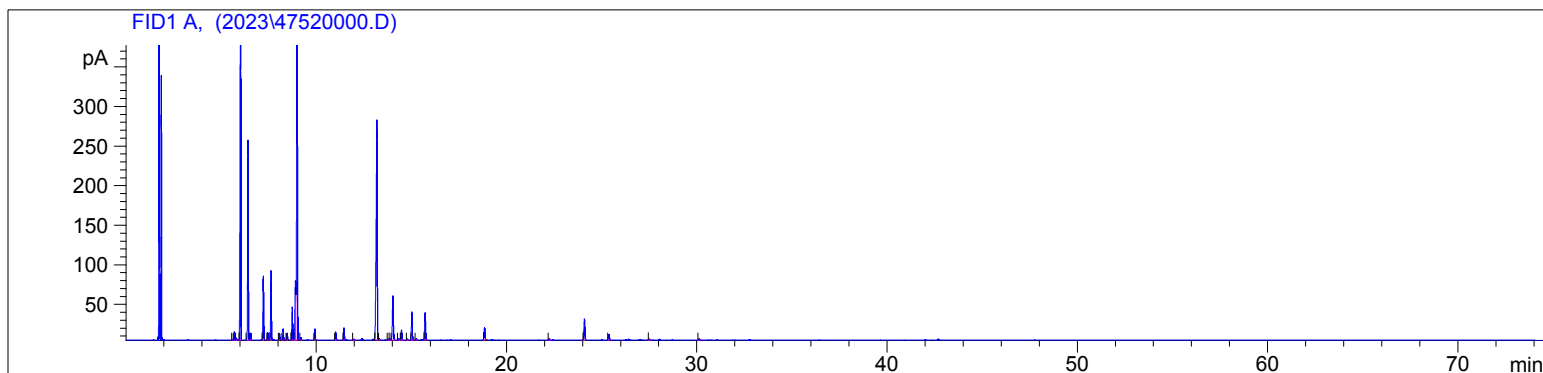
C:\HPCHEM\2\DATA\2023\
47520000.D

Rosemary Borneol/Camphor ORG
4752-JZFN
Spain
Rosmarinus officinalis
Sample/Solvent: 0.05g/0.52g
Injection Amount: 0.2uL
20:1 Split Ratio

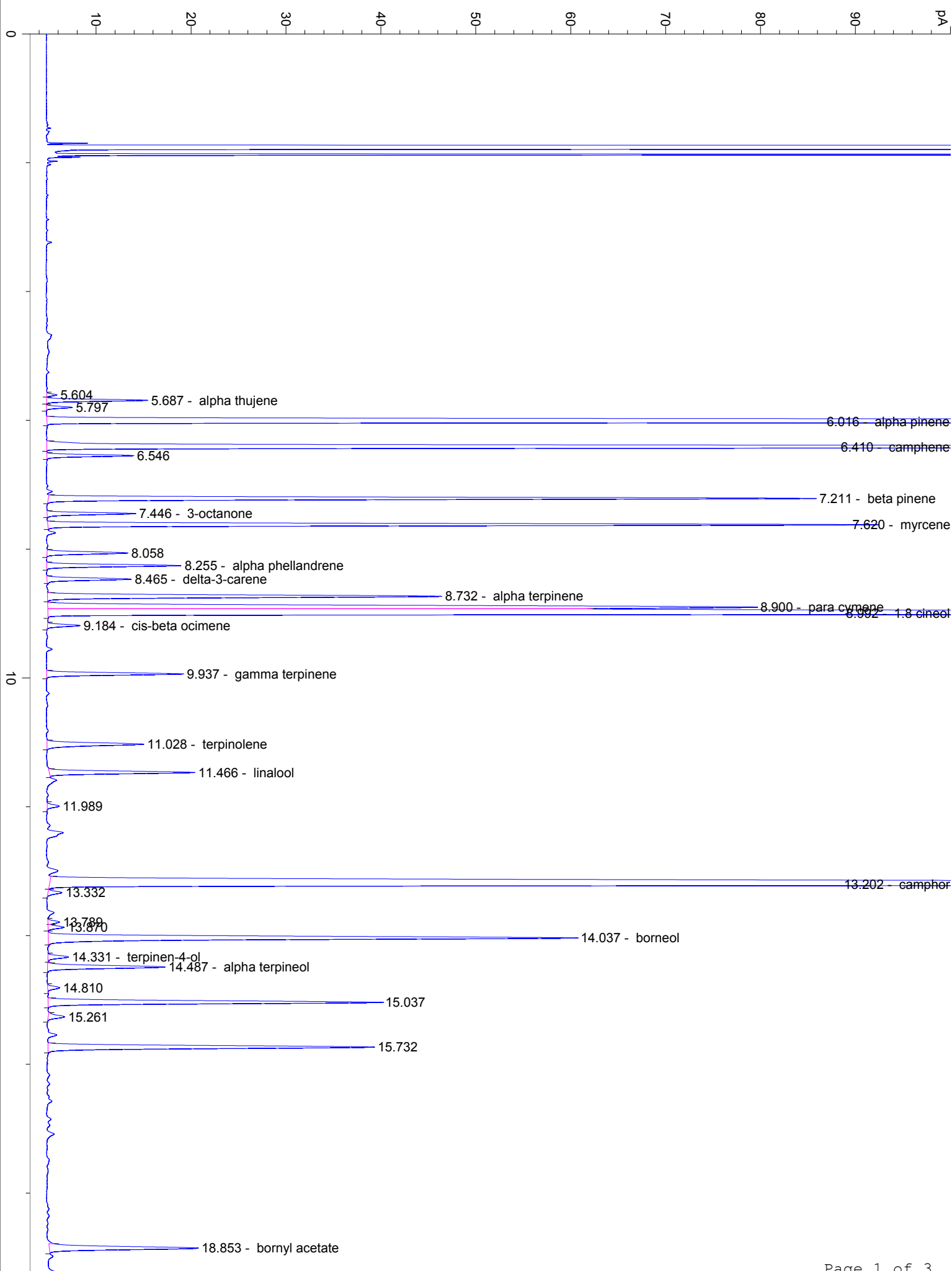
HP-5 5% Phenyl Methyl Siloxane
30.000m
250.000um
0.250um

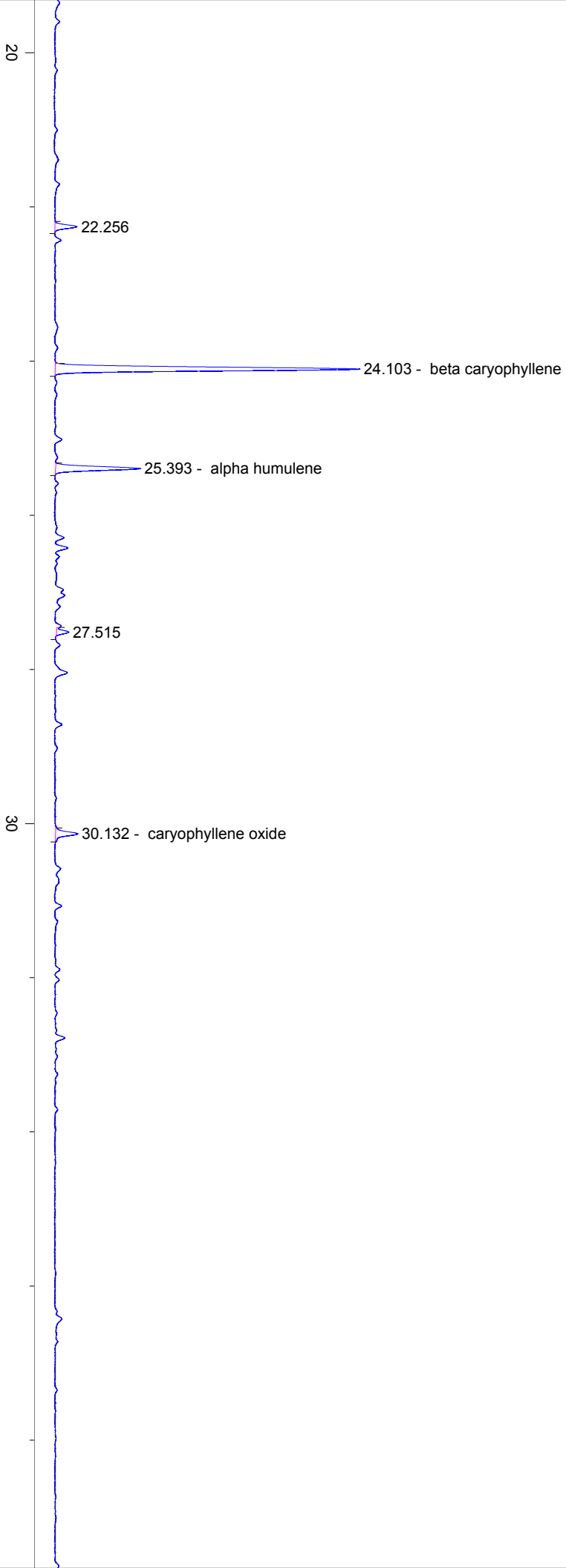
10/6/2023 1:08:01 PM
10/6/2023 1:08:01 PM

10/9/2023
11:26:03 AM



#	Compound Name	Meas. Ret.	Amount	Response	Height	Area	Area %
1		5.60	0.00	2.23	1.06	2.23	0.04
2	alpha thujene	5.69	0.00	23.34	10.65	23.34	0.38
3		5.80	0.00	5.90	2.72	5.90	0.10
4	alpha pinene	6.02	0.00	1450.61	588.03	1450.61	23.90
5	camphene	6.41	0.00	594.60	252.64	594.60	9.80
6		6.55	0.00	20.61	9.13	20.61	0.34
7	beta pinene	7.21	0.00	203.01	80.85	203.01	3.34
8	3-octanone	7.45	0.00	22.25	9.32	22.25	0.37
9	myrcene	7.62	0.00	208.85	87.42	208.85	3.44
10		8.06	0.00	22.29	8.51	22.29	0.37
11	alpha phellandrene	8.25	0.00	36.02	14.12	36.02	0.59
12	delta-3-carene	8.46	0.00	22.96	8.86	22.96	0.38
13	alpha terpinene	8.73	0.00	118.04	41.51	118.04	1.95
14	para cymene	8.90	0.00	242.56	74.70	242.56	4.00
15	1.8 cineol	8.99	0.00	1167.58	377.34	1167.58	19.24
16	cis-beta ocimene	9.18	0.00	8.66	3.43	8.66	0.14
17	gamma terpinene	9.94	0.00	38.19	14.41	38.19	0.63
18	terpinolene	11.03	0.00	33.03	10.20	33.03	0.54
19	linalool	11.47	0.00	43.46	15.31	43.46	0.72
20		11.99	0.00	3.81	1.26	3.81	0.06
21	camphor	13.20	0.00	1129.47	277.55	1129.47	18.61
22		13.33	0.00	4.54	1.45	4.54	0.07
23		13.79	0.00	3.55	1.23	3.55	0.06
24		13.87	0.00	5.08	1.71	5.08	0.08
25	borneol	14.04	0.00	190.92	55.72	190.92	3.15
26	terpinen-4-ol	14.33	0.00	6.82	2.16	6.82	0.11
27	alpha terpineol	14.49	0.00	39.52	12.37	39.52	0.65
28		14.81	0.00	3.92	1.25	3.92	0.06
29		15.04	0.00	111.14	35.16	111.14	1.83
30		15.26	0.00	5.97	1.72	5.97	0.10
31		15.73	0.00	110.15	34.35	110.15	1.81
32	bornyl acetate	18.85	0.00	53.38	15.66	53.38	0.88
33		22.26	0.00	6.46	1.93	6.46	0.11
34	beta caryophyllene	24.10	0.00	93.03	26.77	93.03	1.53
35	alpha humulene	25.39	0.00	26.03	7.44	26.03	0.43
36		27.52	0.00	3.32	1.06	3.32	0.05
37	caryophyllene oxide	30.13	0.00	7.71	1.93	7.71	0.13





40

50

min