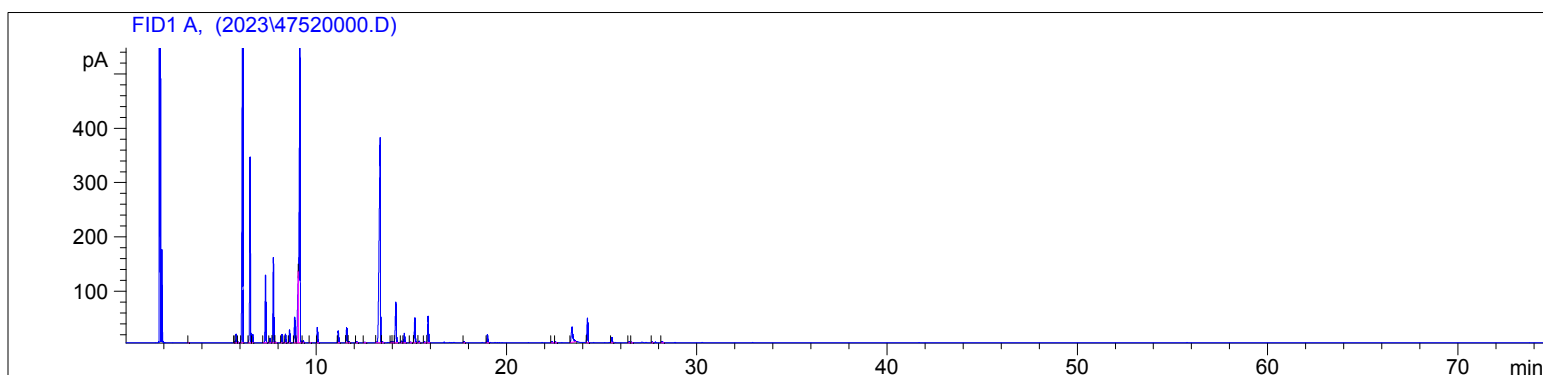


Rosemary Camphor Borneol Organic  
4752-BZIN  
Spain  
Rosmarinus officinalis  
Sample/Solvent: 0.10g/0.52g  
Injection Amount: 0.2uL  
15:1 Split Ratio

HP-5 5% Phenyl Methyl Siloxane  
30.000m  
250.000um  
0.250um

2/13/2023 2:00:25 PM  
2/13/2023 2:00:25 PM

2/16/2023  
2:23:42 PM



#	Compound Name	Meas. Ret.	Amount	Response	Height	Area	Area %
1		3.29	0.00	1.87	0.96	1.87	0.02
2		5.70	0.00	3.90	1.72	3.90	0.04
3	alpha thujene	5.78	0.00	39.44	16.36	39.44	0.40
4		5.89	0.00	3.94	1.63	3.94	0.04
5	alpha pinene	6.13	0.00	2327.85	842.24	2327.85	23.74
6	camphene	6.52	0.00	849.04	340.60	849.04	8.66
7		6.65	0.00	36.24	15.25	36.24	0.37
8	beta pinene	7.32	0.00	326.61	124.38	326.61	3.33
9	3-octanone	7.56	0.00	22.19	8.51	22.19	0.23
10	myrcene	7.74	0.00	398.51	156.56	398.51	4.06
11		7.86	0.00	3.31	1.09	3.31	0.03
12	alpha phellandrene	8.18	0.00	41.65	15.56	41.65	0.42
13	delta-3-carene	8.37	0.00	43.45	16.28	43.45	0.44
14	alpha terpinene	8.59	0.00	64.47	23.34	64.47	0.66
15	para cymene	8.86	0.00	153.53	47.32	153.53	1.57
16	d-limonene	9.06	0.00	409.10	131.40	409.10	4.17
17	1,8-cineol	9.14	0.00	1932.57	548.09	1932.57	19.71
18	cis-beta ocimene	9.31	0.00	9.39	3.55	9.39	0.10
19	trans-beta ocimene	9.68	0.00	2.31	0.86	2.31	0.02
20	gamma terpinene	10.07	0.00	76.81	28.24	76.81	0.78
21	terpinolene	11.16	0.00	72.61	21.84	72.61	0.74
22	linalool	11.61	0.00	85.09	27.76	85.09	0.87
23		11.72	0.00	9.11	2.25	9.11	0.09
24		12.13	0.00	5.69	1.81	5.69	0.06
25		12.54	0.00	6.34	1.19	6.34	0.06
26	camphor	13.37	0.00	1745.72	377.02	1745.72	17.81
27		13.48	0.00	7.72	2.29	7.72	0.08
28		13.94	0.00	7.19	2.42	7.19	0.07
29		14.02	0.00	6.76	2.27	6.76	0.07
30	borneol	14.19	0.00	265.13	74.26	265.13	2.70
31		14.48	0.00	8.91	2.88	8.91	0.09
32	terpin-4-ol	14.64	0.00	55.50	17.45	55.50	0.57
33		14.96	0.00	4.46	1.37	4.46	0.05
34	alpha terpineol	15.19	0.00	150.25	46.01	150.25	1.53
35		15.41	0.00	9.15	2.67	9.15	0.09
36		15.69	0.00	5.55	1.81	5.55	0.06

4752

Instrument 6890

C:\HPCHEM\2\DATA\2023\  
47520000.D

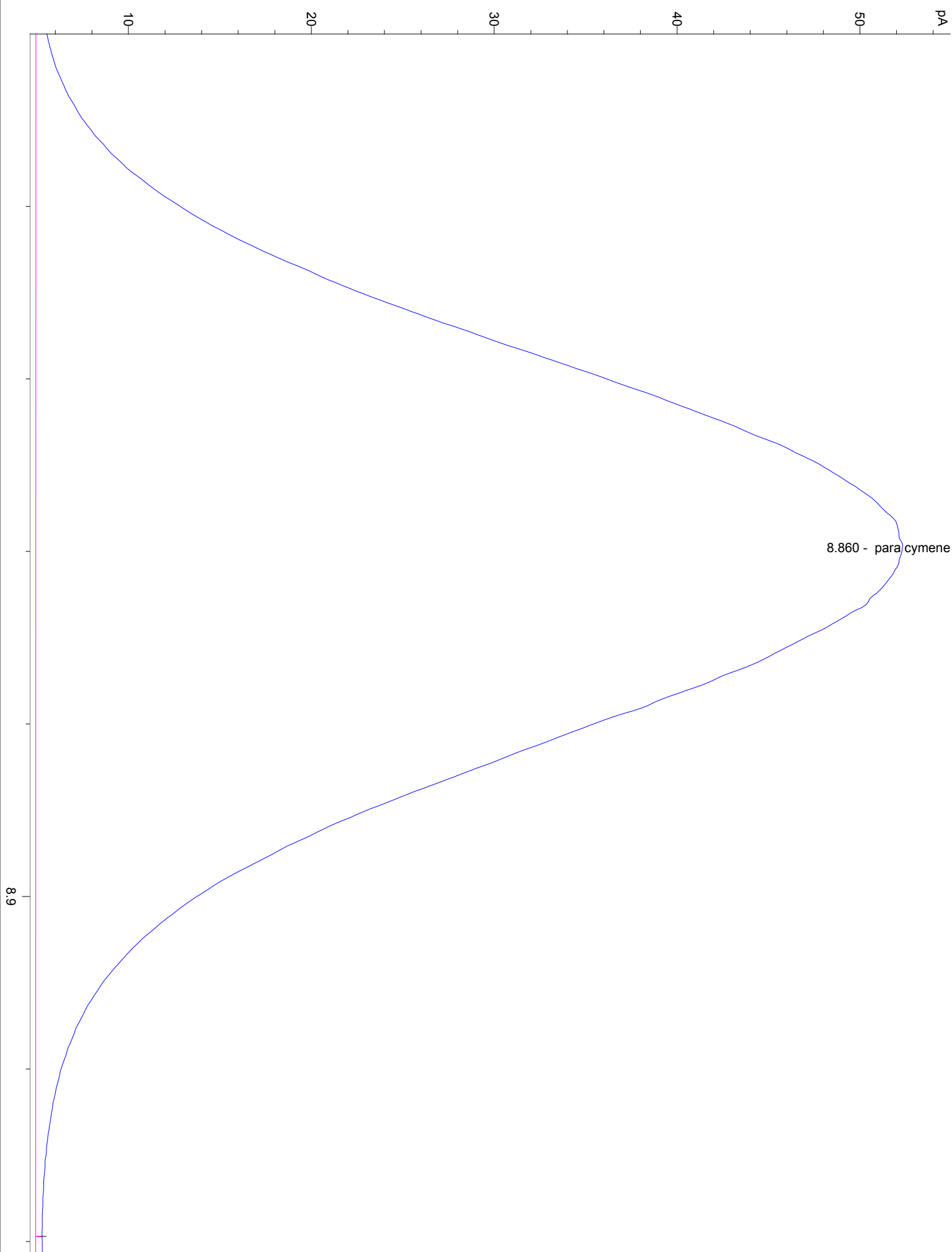
Rosemary Borneol Organic  
4752-BZIN  
Spain  
Rosmarinus officinalis  
Sample/Solvent: 0.10g/0.52g  
Injection Amount: 0.2uL  
15:1 Split Ratio

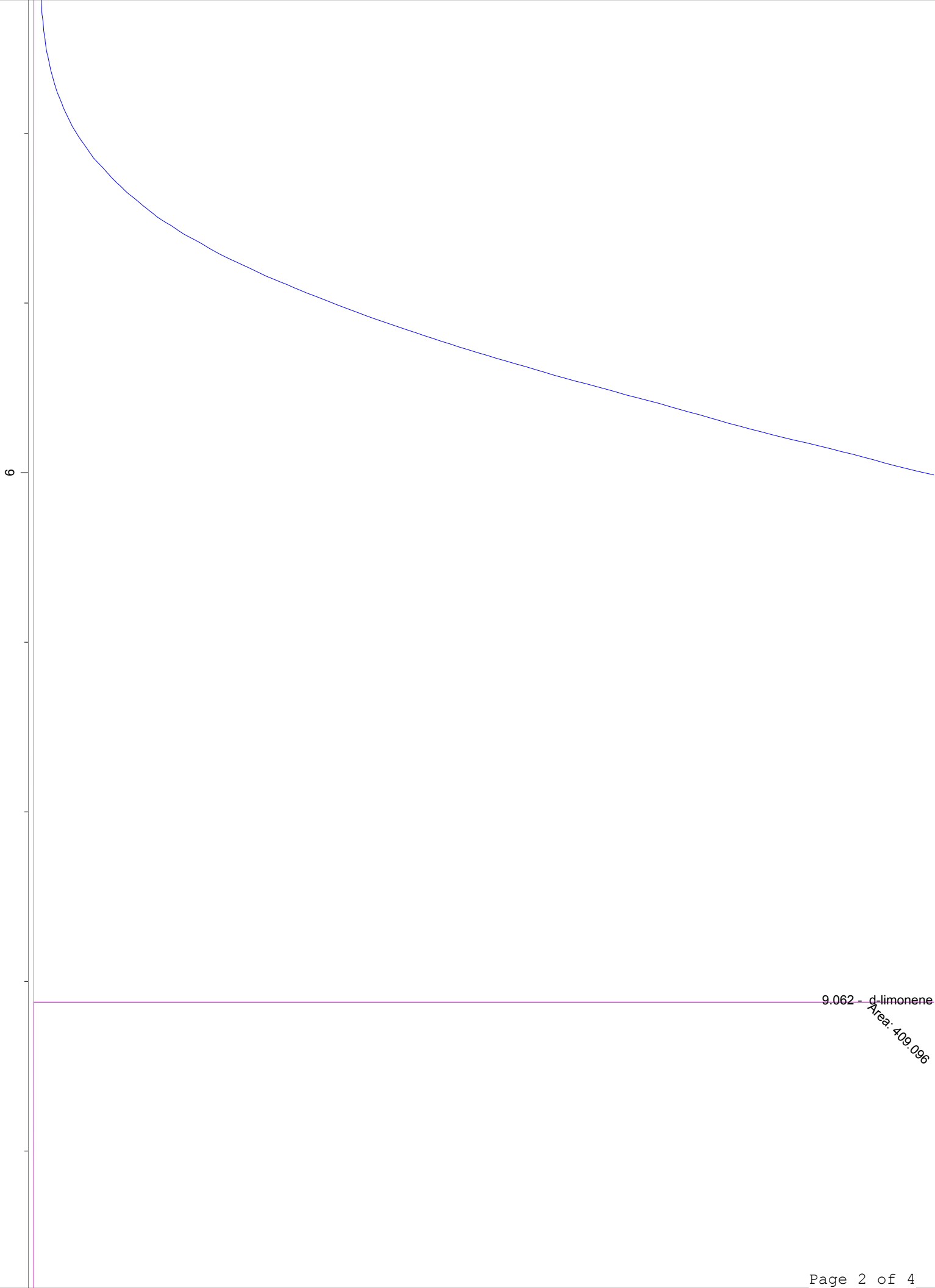
HP-5 5% Phenyl Methyl Siloxane  
30.000m  
250.000um  
0.250um

2/13/2023 2:00:25 PM  
2/13/2023 2:00:25 PM

2/16/2023  
2:23:42 PM

#	Compound Name	Meas. Ret.	Amount	Response	Height	Area	Area %
37	verbenone	15.89	0.00	162.56	48.76	162.56	1.66
38		17.77	0.00	9.34	2.53	9.34	0.10
39	bornyl acetate	19.00	0.00	48.85	14.87	48.85	0.50
40		22.41	0.00	7.58	2.24	7.58	0.08
41		22.58	0.00	6.12	1.81	6.12	0.06
42		23.45	0.00	162.87	28.28	162.87	1.66
43	beta caryophyllene	24.26	0.00	158.77	44.85	158.77	1.62
44	alpha humulene	25.55	0.00	32.98	9.47	32.98	0.34
45		26.44	0.00	5.31	1.68	5.31	0.05
46		26.57	0.00	2.16	0.93	2.16	0.02
47		27.66	0.00	5.06	1.59	5.06	0.05
48		28.19	0.00	11.03	2.70	11.03	0.11





9.062 - d-limonene  
Area: 409.096

9.1

9.2

9.136 - 1,8-cineol  
Area: 1932.57

