

4781

Instrument 6890

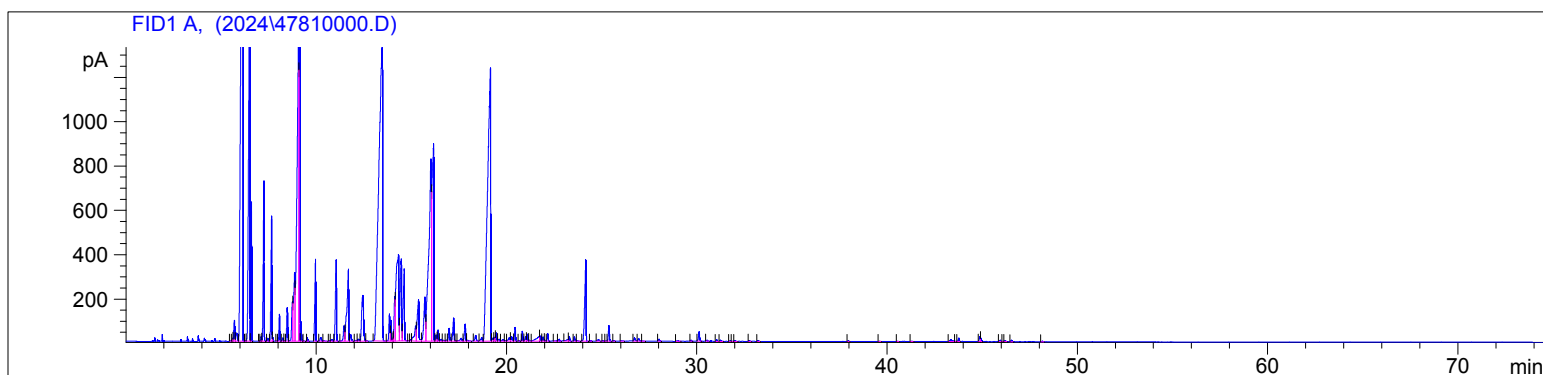
C:\HPCHEM\2\DATA\2024\
47810000.D

Rosemary Verbenone ORG
4781-EBIA
South Africa
Rosmarinus officinalis
Sample/Solvent: 0.05g/0.52g
Injection Amount: 0.2uL
20:1 Split Ratio

HP-5 5% Phenyl Methyl Siloxane
30.000m
250.000um
0.250um

5/30/2024 11:59:02 AM
5/30/2024 11:59:02 AM

5/30/2024
1:41:42 PM



#	Compound Name	Meas. Ret.	Amount	Response	Height	Area	Area %
1		5.50	0.00	5.05	1.71	5.05	0.00
2		5.60	0.00	41.78	13.62	41.78	0.03
3	alpha thujene	5.69	0.00	355.02	94.47	355.02	0.29
4		5.82	0.00	206.48	36.54	206.48	0.17
5	alpha pinene	6.14	0.00	21528.94	3252.58	21528.94	17.54
6		6.30	0.00	7.67	2.93	7.67	0.01
7	camphene	6.50	0.00	8043.86	1854.03	8043.86	6.55
8	thuja-2,4(10)diene	6.59	0.00	1444.95	626.87	1444.95	1.18
9		7.01	0.00	6.51	2.61	6.51	0.01
10		7.10	0.00	63.60	21.80	63.60	0.05
11	beta pinene	7.24	0.00	2260.73	721.84	2260.73	1.84
12		7.44	0.00	37.41	13.51	37.41	0.03
13	myrcene	7.65	0.00	1800.19	561.45	1800.19	1.47
14		7.72	0.00	33.21	15.95	33.21	0.03
15		7.93	0.00	2.94	1.11	2.94	0.00
16	alpha phellandrene	8.06	0.00	343.69	121.81	343.69	0.28
17		8.24	0.00	43.43	13.83	43.43	0.04
18		8.32	0.00	6.60	2.20	6.60	0.01
19		8.47	0.00	556.40	151.84	556.40	0.45
20	alpha terpinene	8.75	0.00	813.30	178.76	813.30	0.66
21	para cymene	8.86	0.00	1691.41	308.38	1691.41	1.38
22	limonene	9.06	0.00	9494.33	1378.40	9494.33	7.73
23	1.8 cineol	9.12	0.00	3653.70	1469.72	3653.70	2.98
24		9.20	0.00	217.60	88.26	217.60	0.18
25		9.35	0.00	3.30	1.23	3.30	0.00
26	cis-beta ocimene	9.54	0.00	37.19	14.58	37.19	0.03
27	gamma terpinene	9.97	0.00	1196.91	368.25	1196.91	0.98
28		10.24	0.00	80.08	16.39	80.08	0.07
29		10.41	0.00	14.29	2.61	14.29	0.01
30		10.69	0.00	4.69	1.65	4.69	0.00
31		10.81	0.00	38.04	7.87	38.04	0.03
32	terpinolene	11.06	0.00	1440.57	365.61	1440.57	1.17
33		11.47	0.00	326.00	69.68	326.00	0.27
34	linalool	11.70	0.00	1989.99	323.86	1989.99	1.62
35		11.82	0.00	125.56	30.65	125.56	0.10
36		12.08	0.00	14.77	3.45	14.77	0.01
37		12.22	0.00	44.02	8.87	44.02	0.04
38	chrysanthenone	12.45	0.00	1442.29	205.62	1442.29	1.17
39		12.63	0.00	11.57	3.04	11.57	0.01
40	camphor	13.49	0.00	18063.02	1335.76	18063.02	14.71

4781

Instrument 6890

C:\HPCHEM\2\DATA\2024\
47810000.DRosemary Verbenone ORG
4781-EBIA
South Africa
Rosmarinus officinalis
Sample/Solvent: 0.05g/0.52g
Injection Amount: 0.2uL
20:1 Split RatioHP-5 5% Phenyl Methyl Siloxane
30.000m
250.000um
0.250um5/30/2024 11:59:02 AM
5/30/2024 11:59:02 AM5/30/2024
1:41:42 PM

#	Compound Name	Meas. Ret.	Amount	Response	Height	Area	Area %
41		13.86	0.00	414.02	121.70	414.02	0.34
42		13.93	0.00	273.76	93.80	273.76	0.22
43		14.03	0.00	39.56	13.06	39.56	0.03
44		14.13	0.00	694.23	199.26	694.23	0.57
45	borneol	14.33	0.00	3865.76	389.60	3865.76	3.15
46	cis-pinocamphone	14.48	0.00	1951.67	369.55	1951.67	1.59
47	terpin-4-ol	14.63	0.00	1524.38	324.87	1524.38	1.24
48		14.86	0.00	3.96	1.46	3.96	0.00
49		14.97	0.00	13.51	4.41	13.51	0.01
50	alpha terpineol	15.23	0.00	434.18	66.48	434.18	0.35
51		15.39	0.00	1165.50	185.97	1165.50	0.95
52	verbanol	15.72	0.00	1115.25	197.55	1115.25	0.91
53	verbenone	16.03	0.00	7650.00	817.85	7650.00	6.23
54	verbenone	16.18	0.00	5771.71	885.73	5771.71	4.70
55		16.31	0.00	97.64	26.29	97.64	0.08
56		16.41	0.00	175.75	49.96	175.75	0.14
57		16.57	0.00	35.05	7.43	35.05	0.03
58		16.68	0.00	22.36	4.04	22.36	0.02
59		16.85	0.00	14.11	3.86	14.11	0.01
60		16.99	0.00	226.99	57.25	226.99	0.18
61		17.23	0.00	445.55	103.34	445.55	0.36
62		17.34	0.00	12.09	2.94	12.09	0.01
63		17.62	0.00	87.65	12.75	87.65	0.07
64		17.84	0.00	308.12	76.13	308.12	0.25
65		17.96	0.00	29.17	4.92	29.17	0.02
66		18.38	0.00	123.22	25.36	123.22	0.10
67		18.70	0.00	83.45	15.46	83.45	0.07
68	bornyl acetate	19.16	0.00	13752.61	1229.12	13752.61	11.20
69		19.30	0.00	63.98	13.68	63.98	0.05
70		19.38	0.00	60.02	17.76	60.02	0.05
71		19.47	0.00	156.45	37.38	156.45	0.13
72		19.62	0.00	40.77	8.98	40.77	0.03
73		19.81	0.00	38.08	7.42	38.08	0.03
74		19.95	0.00	14.89	3.40	14.89	0.01
75		20.15	0.00	85.00	15.77	85.00	0.07
76		20.27	0.00	101.00	20.81	101.00	0.08
77		20.46	0.00	214.76	62.29	214.76	0.17
78		20.66	0.00	4.92	1.53	4.92	0.00
79		20.84	0.00	147.94	45.37	147.94	0.12
80		21.01	0.00	78.95	20.62	78.95	0.06
81		21.11	0.00	105.54	31.61	105.54	0.09
82		21.19	0.00	19.46	4.90	19.46	0.02
83		21.71	0.00	231.73	20.10	231.73	0.19
84		21.82	0.00	125.37	23.40	125.37	0.10
85		21.93	0.00	65.08	18.07	65.08	0.05
86		22.01	0.00	13.14	4.64	13.14	0.01
87		22.18	0.00	106.92	32.51	106.92	0.09
88		22.53	0.00	13.85	1.85	13.85	0.01
89		22.77	0.00	28.93	8.27	28.93	0.02
90		23.22	0.00	56.75	7.73	56.75	0.05
91		23.31	0.00	77.81	20.28	77.81	0.06
92		23.57	0.00	68.73	19.11	68.73	0.06
93		23.73	0.00	14.66	2.97	14.66	0.01
94	beta caryophyllene	24.17	0.00	1773.03	365.95	1773.03	1.44
95		24.42	0.00	7.19	2.03	7.19	0.01

4781

Instrument 6890

C:\HPCHEM\2\DATA\2024\47810000.D

Rosemary Verbenone ORG
4781-EBIA
South Africa
Rosmarinus officinalis
Sample/Solvent: 0.05g/0.52g
Injection Amount: 0.2uL
20:1 Split Ratio

HP-5 5% Phenyl Methyl Siloxane
30.000m
250.000um
0.250um

5/30/2024 11:59:02 AM
5/30/2024 11:59:02 AM

5/30/2024
1:41:42 PM

#	Compound Name	Meas. Ret.	Amount	Response	Height	Area	Area %
96		24.83	0.00	38.51	7.66	38.51	0.03
97		25.08	0.00	7.98	2.78	7.98	0.01
98		25.23	0.00	8.99	2.18	8.99	0.01
99		25.39	0.00	256.04	70.45	256.04	0.21
100		25.65	0.00	12.29	2.86	12.29	0.01
101		26.06	0.00	14.06	2.26	14.06	0.01
102		26.73	0.00	60.08	13.39	60.08	0.05
103		26.96	0.00	53.20	10.33	53.20	0.04
104		27.17	0.00	6.33	1.32	6.33	0.01
105		28.02	0.00	43.11	10.00	43.11	0.04
106		29.02	0.00	15.78	3.03	15.78	0.01
107		29.71	0.00	18.50	5.46	18.50	0.02
108		30.13	0.00	178.08	42.48	178.08	0.15
109		30.54	0.00	19.81	5.07	19.81	0.02
110		31.05	0.00	24.41	6.76	24.41	0.02
111		31.25	0.00	25.09	5.74	25.09	0.02
112		31.75	0.00	8.15	2.21	8.15	0.01
113		31.88	0.00	4.67	1.32	4.67	0.00
114		32.01	0.00	13.90	3.20	13.90	0.01
115		32.76	0.00	16.57	4.44	16.57	0.01
116		33.23	0.00	15.42	4.30	15.42	0.01
117		37.96	0.00	13.86	3.77	13.86	0.01
118		39.60	0.00	6.16	1.43	6.16	0.01
119		40.55	0.00	5.35	1.45	5.35	0.00
120		41.28	0.00	10.63	2.27	10.63	0.01
121		43.35	0.00	63.48	8.68	63.48	0.05
122		43.59	0.00	6.68	1.76	6.68	0.01
123		43.76	0.00	58.60	15.93	58.60	0.05
124		44.87	0.00	87.38	22.27	87.38	0.07
125		44.93	0.00	46.28	15.07	46.28	0.04
126		45.94	0.00	23.55	5.81	23.55	0.02
127		46.10	0.00	7.30	1.95	7.30	0.01
128		46.20	0.00	18.41	4.72	18.41	0.01
129		46.53	0.00	24.49	6.76	24.49	0.02
130		48.15	0.00	7.88	2.12	7.88	0.01

