

4801-DAAL

Instrument 6890

C:\HPCHEM\2\DATA\2022\
48010000.D

Sage ORGANIC

HP-5 5% Phenyl Methyl Siloxane

4801-DAAL

30.000m

France

250.000um

Salvia officinalis

0.250um

Sample/Solvent Ratio: 0.06g/0.51g

Injection Amount: 0.2uL

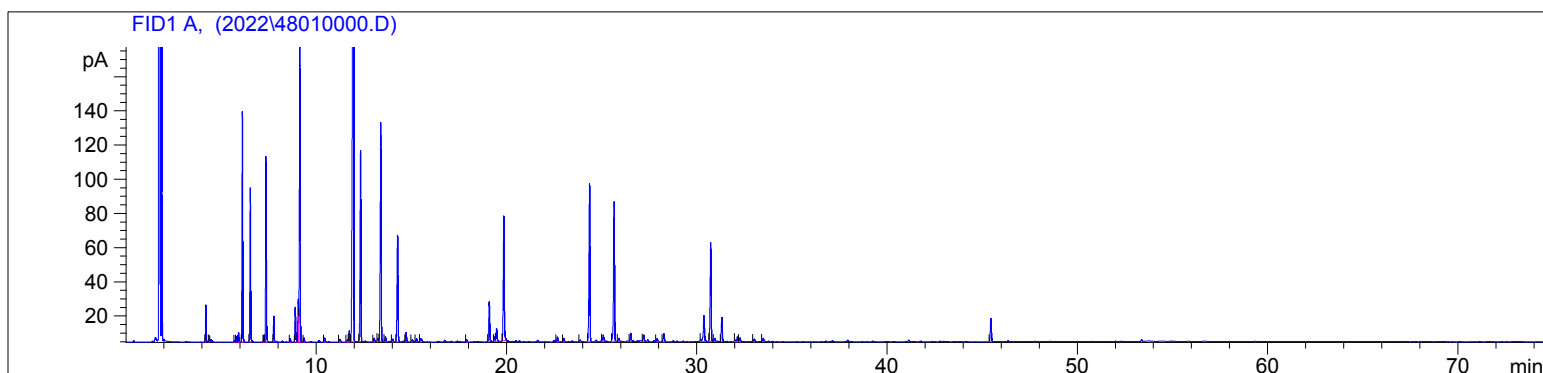
20:1 Split Ratio

5/13/2022 1:46:43 PM

2/14/2023

5/13/2022 1:46:43 PM

2:40:45 PM



#	Compound Name	Meas. Ret.	Amount	Response	Height	Area	Area %
1	cis-salvene	4.19	0.00	46.63	21.57	46.63	0.80
2	trans-salvene	4.38	0.00	7.36	3.47	7.36	0.13
3		5.73	0.00	2.54	1.04	2.54	0.04
4	tricyclene	5.82	0.00	8.00	3.26	8.00	0.14
5	alpha thujene	5.93	0.00	13.65	5.62	13.65	0.23
6	alpha pinene	6.13	0.00	339.04	134.35	339.04	5.81
7	camphene	6.54	0.00	232.51	90.05	232.51	3.99
8	sabinene	7.26	0.00	9.61	3.68	9.61	0.16
9	beta pinene	7.37	0.00	289.85	108.17	289.85	4.97
10	myrcene	7.78	0.00	38.48	15.07	38.48	0.66
11	alpha terpinene	8.64	0.00	6.42	2.12	6.42	0.11
12	para cymene	8.91	0.00	59.53	20.40	59.53	1.02
13	d.limonene	9.06	0.00	72.93	25.09	72.93	1.25
14	1.8 cineol	9.15	0.00	521.55	177.22	521.55	8.94
15	cis-beta ocimene	9.37	0.00	6.56	2.41	6.56	0.11
16	gamma terpinene	10.44	0.00	7.81	2.40	7.81	0.13
17	terpinolene	11.23	0.00	6.72	1.68	6.72	0.12
18		11.63	0.00	4.36	1.22	4.36	0.07
19	linalool	11.73	0.00	20.77	6.67	20.77	0.36
20	alpha thujone	11.95	0.00	1536.86	360.35	1536.86	26.36
21	beta thujone	12.32	0.00	346.58	111.59	346.58	5.94
22		13.04	0.00	7.34	2.17	7.34	0.13
23		13.24	0.00	4.33	1.43	4.33	0.07
24	camphor	13.39	0.00	428.16	127.68	428.16	7.34
25		13.63	0.00	9.58	3.06	9.58	0.16
26		14.01	0.00	4.96	1.62	4.96	0.09
27	borneol	14.27	0.00	223.55	62.17	223.55	3.83
28	terpin-4-ol	14.72	0.00	17.32	5.33	17.32	0.30
29		15.04	0.00	4.43	1.19	4.43	0.08
30	alpha terpineol	15.26	0.00	6.79	2.03	6.79	0.12
31	myrtenol	15.49	0.00	9.56	1.86	9.56	0.16
32		17.90	0.00	3.93	1.13	3.93	0.07
33	bornyl acetate	19.09	0.00	78.91	23.39	78.91	1.35
34	3-thujyl acetate	19.38	0.00	8.63	2.74	8.63	0.15
35		19.47	0.00	26.22	7.46	26.22	0.45
36		19.85	0.00	268.25	72.82	268.25	4.60
37		22.67	0.00	8.96	2.76	8.96	0.15
38		23.01	0.00	6.99	1.99	6.99	0.12
39		23.86	0.00	3.38	1.11	3.38	0.06
40	beta caryophyllene	24.36	0.00	335.06	92.23	335.06	5.75

4801-DAAL

Instrument 6890

C:\HPCHEM\2\DATA\2022\
48010000.D

Sage ORGANIC

HP-5 5% Phenyl Methyl Siloxane

4801-DAAL

30.000m

France

250.000um

Salvia officinalis

0.250um

Sample/Solvent Ratio: 0.06g/0.51g

Injection Amount: 0.2uL

20:1 Split Ratio

5/13/2022 1:46:43 PM

2/14/2023

5/13/2022 1:46:43 PM

2:40:45 PM

#	Compound Name	Meas. Ret.	Amount	Response	Height	Area	Area %
41		25.08	0.00	15.45	3.58	15.45	0.27
42	alpha humulene	25.65	0.00	300.16	81.77	300.16	5.15
43	aromandendrene	25.90	0.00	5.12	1.76	5.12	0.09
44	germacrene D	26.52	0.00	15.34	4.68	15.34	0.26
45		27.21	0.00	13.30	3.66	13.30	0.23
46		27.91	0.00	6.73	1.82	6.73	0.12
47		28.26	0.00	18.87	4.62	18.87	0.32
48	caryophyllene oxide	30.37	0.00	67.69	15.21	67.69	1.16
49	viridiflorol	30.73	0.00	212.80	57.80	212.80	3.65
50	humulene epoxide II	30.95	0.00	5.84	1.77	5.84	0.10
51		31.31	0.00	50.23	14.05	50.23	0.86
52		32.13	0.00	13.90	2.93	13.90	0.24
53		32.26	0.00	7.85	2.09	7.85	0.13
54		33.01	0.00	5.89	1.55	5.89	0.10
55		33.48	0.00	6.70	1.81	6.70	0.11
56	manool oxide	45.45	0.00	50.99	13.33	50.99	0.87

