

4811

Instrument 6890

C:\HPCHEM\2\DATA\2023\  
48110000.D

Sandalwood ORG

HP-5 5% Phenyl Methyl Siloxane

4811-JZIN

30.000m

Australia

250.000um

Santalum spicatum

0.250um

Sample/Solvent: 0.06g/0.53g

Injection Amount: 0.2uL

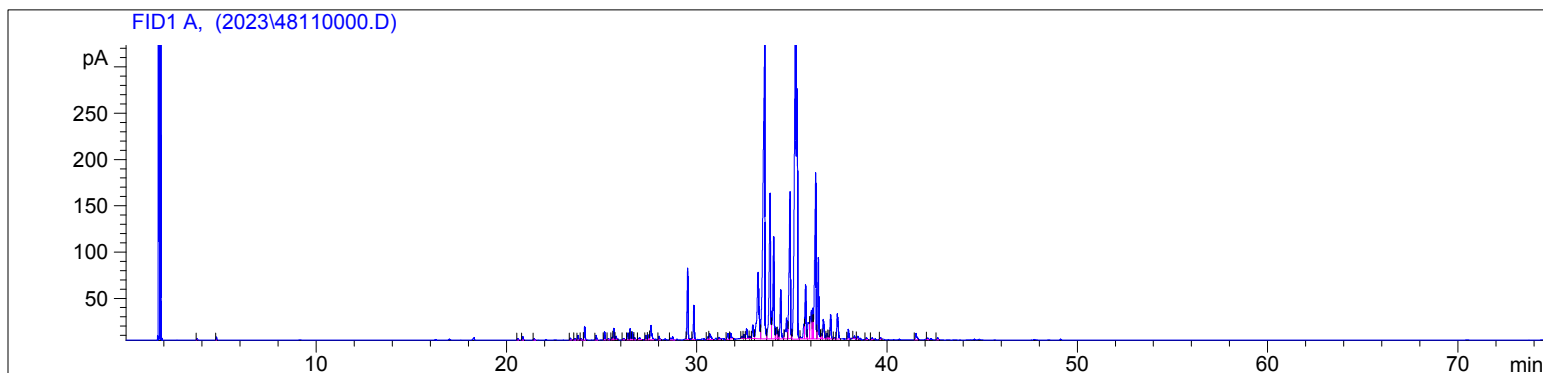
20:1 Split Ratio

10/10/2023 10:17:09 AM

10/10/2023

10/10/2023 10:17:09 AM

2:01:04 PM



#	Compound Name	Meas. Ret.	Amount	Response	Height	Area	Area %
1		3.73	0.00	3.05	1.56	3.05	0.03
2		4.75	0.00	6.37	3.34	6.37	0.05
3		20.60	0.00	5.80	1.72	5.80	0.05
4		20.86	0.00	13.04	3.85	13.04	0.11
5		21.45	0.00	6.00	1.51	6.00	0.05
6		23.36	0.00	8.11	2.15	8.11	0.07
7		23.59	0.00	5.45	1.74	5.45	0.05
8		23.76	0.00	17.30	4.91	17.30	0.14
9		23.93	0.00	4.29	1.38	4.29	0.04
10	alpha santalene	24.12	0.00	50.24	14.56	50.24	0.42
11		24.72	0.00	17.07	5.02	17.07	0.14
12	beta epi satalene	25.16	0.00	30.65	9.03	30.65	0.26
13		25.36	0.00	5.27	1.40	5.27	0.04
14		25.56	0.00	9.15	2.63	9.15	0.08
15	beta santalene	25.65	0.00	41.81	12.38	41.81	0.35
16		25.76	0.00	11.19	3.61	11.19	0.09
17		26.15	0.00	7.03	1.63	7.03	0.06
18		26.39	0.00	24.91	7.36	24.91	0.21
19	germacrene D	26.51	0.00	41.57	12.05	41.57	0.35
20		26.63	0.00	31.98	8.46	31.98	0.27
21		26.74	0.00	8.98	2.58	8.98	0.07
22		27.00	0.00	12.79	2.29	12.79	0.11
23		27.34	0.00	16.82	4.77	16.82	0.14
24		27.49	0.00	18.35	5.16	18.35	0.15
25		27.60	0.00	77.90	15.62	77.90	0.65
26		28.03	0.00	13.87	3.95	13.87	0.12
27		28.73	0.00	19.97	3.41	19.97	0.17
28	trans nerolidol	29.53	0.00	276.97	76.71	276.97	2.31
29	dendrolasin	29.86	0.00	127.77	36.78	127.77	1.06
30		30.59	0.00	12.46	2.93	12.46	0.10
31		30.69	0.00	36.90	6.29	36.90	0.31
32		31.19	0.00	9.52	2.10	9.52	0.08
33		31.64	0.00	26.80	6.27	26.80	0.22
34		31.78	0.00	26.34	6.39	26.34	0.22
35		32.38	0.00	8.16	2.56	8.16	0.07
36		32.48	0.00	15.64	4.48	15.64	0.13
37		32.62	0.00	53.49	10.46	53.49	0.45
38		32.81	0.00	10.15	2.41	10.15	0.08
39		32.95	0.00	67.35	14.73	67.35	0.56
40	beta bisabolol	33.23	0.00	514.73	71.25	514.73	4.29

4811

Instrument 6890

C:\HPCHEM\2\DATA\2023\  
48110000.D

Sandalwood ORG  
4811-JZIN  
Australia  
Santalum spicatum  
Sample/Solvent: 0.06g/0.53g  
Injection Amount: 0.2uL  
20:1 Split Ratio

HP-5 5% Phenyl Methyl Siloxane  
30.000m  
250.000um  
0.250um

10/10/2023 10:17:09 AM  
10/10/2023 10:17:09 AM

10/10/2023  
2:01:04 PM

#	Compound Name	Meas. Ret.	Amount	Response	Height	Area	Area %
41	cis-alpha santalol	33.57	0.00	2084.82	323.45	2084.82	17.36
42	alpha bisabolol	33.86	0.00	759.39	156.73	759.39	6.32
43	alpha bergamotol	34.05	0.00	488.07	110.06	488.07	4.06
44		34.18	0.00	40.25	11.52	40.25	0.34
45		34.26	0.00	33.62	7.98	33.62	0.28
46	epi-beta santalol	34.42	0.00	213.71	52.79	213.71	1.78
47		34.72	0.00	124.17	22.50	124.17	1.03
48	cis-beta santalol	34.91	0.00	757.34	158.52	757.34	6.31
49	trans trans farnesol	35.20	0.00	3334.45	417.67	3334.45	27.76
50		35.63	0.00	62.68	15.86	62.68	0.52
51		35.72	0.00	251.74	58.20	251.74	2.10
52		35.86	0.00	111.41	17.67	111.41	0.93
53		36.03	0.00	179.94	30.84	179.94	1.50
54		36.10	0.00	117.73	32.98	117.73	0.98
55	trans nuciferol	36.26	0.00	860.47	179.22	860.47	7.16
56	cis lanceol	36.40	0.00	358.02	87.64	358.02	2.98
57		36.55	0.00	21.50	5.18	21.50	0.18
58		36.66	0.00	108.61	21.00	108.61	0.90
59		36.84	0.00	21.82	5.97	21.82	0.18
60		36.92	0.00	11.17	2.92	11.17	0.09
61		37.04	0.00	101.48	26.23	101.48	0.84
62		37.24	0.00	5.89	1.64	5.89	0.05
63		37.39	0.00	134.40	27.03	134.40	1.12
64		37.96	0.00	38.61	10.66	38.61	0.32
65		38.27	0.00	10.40	2.86	10.40	0.09
66		38.46	0.00	10.48	3.06	10.48	0.09
67		38.91	0.00	8.09	2.24	8.09	0.07
68		39.21	0.00	7.52	2.02	7.52	0.06
69		39.66	0.00	6.96	1.61	6.96	0.06
70		41.51	0.00	35.51	6.95	35.51	0.30
71		42.13	0.00	6.38	1.67	6.38	0.05
72		42.65	0.00	9.22	2.24	9.22	0.08

