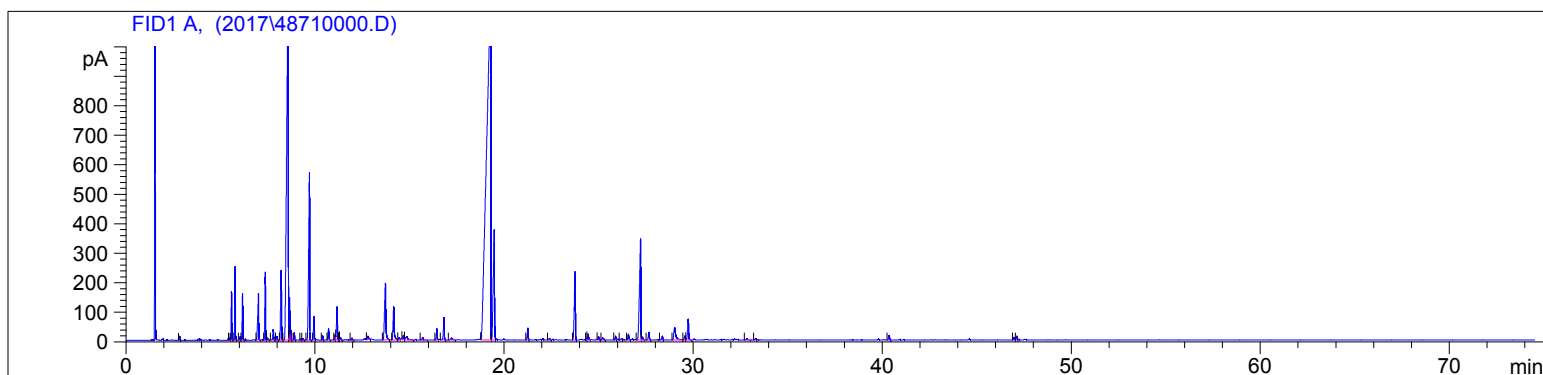


Savory
4871-BBACU
Montenegro
satureia montana
Sample/CH2CL2: 0.12g/0.37g
Injection: 0.2uL

HP-5 5% Phenyl Methyl Siloxane
30.000m
250.000um
0.250um

2/21/2017 2:26:13 PM
2/21/2017 2:26:13 PM

5/30/2017
5:05:23 PM



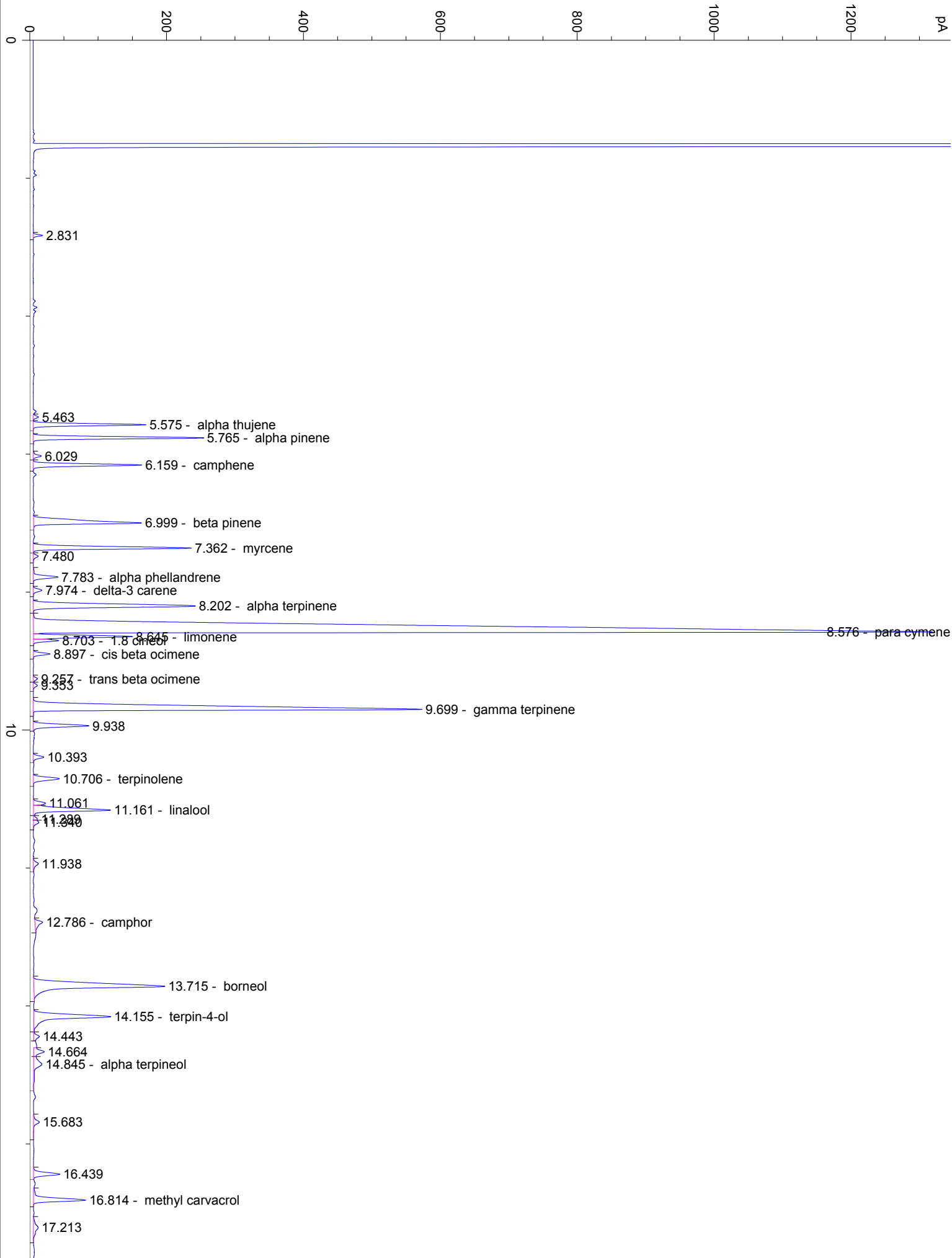
#	Compound Name	Meas. Ret.	Amount	Response	Height	Area	Area %
1		2.83	0.00	25.00	13.71	25.00	0.06
2		5.46	0.00	18.53	7.49	18.53	0.05
3	alpha thujene	5.57	100.00	364.80	164.46	364.80	0.91
4	alpha pinene	5.77	100.00	566.61	248.59	566.61	1.42
5		6.03	0.00	29.26	11.59	29.26	0.07
6	camphene	6.16	100.00	376.46	158.36	376.46	0.94
7	beta pinene	7.00	100.00	536.48	157.68	536.48	1.34
8	myrcene	7.36	100.00	584.24	230.79	584.24	1.46
9		7.48	0.00	20.47	7.03	20.47	0.05
10	alpha phellandrene	7.78	100.00	106.31	35.96	106.31	0.27
11	delta-3 carene	7.97	100.00	36.70	12.48	36.70	0.09
12	alpha terpinene	8.20	100.00	803.29	236.55	803.29	2.01
13	para cymene	8.58	100.00	7515.83	1309.06	7515.83	18.77
14	limonene	8.64	0.00	354.23	144.53	354.23	0.88
15	1.8 cineol	8.70	100.00	78.48	36.88	78.48	0.20
16	cis beta ocimene	8.90	100.00	58.56	24.27	58.56	0.15
17	trans beta ocimene	9.26	100.00	16.66	6.06	16.66	0.04
18		9.35	0.00	17.76	5.75	17.76	0.04
19	gamma terpinene	9.70	100.00	2155.88	567.63	2155.88	5.38
20		9.94	0.00	229.02	80.99	229.02	0.57
21		10.39	0.00	44.08	15.29	44.08	0.11
22	terpinolene	10.71	100.00	124.89	37.94	124.89	0.31
23		11.06	0.00	52.05	17.60	52.05	0.13
24	linalool	11.16	100.00	362.97	112.59	362.97	0.91
25		11.29	0.00	15.68	5.66	15.68	0.04
26		11.34	0.00	27.33	7.95	27.33	0.07
27		11.94	0.00	31.00	7.23	31.00	0.08
28	camphor	12.79	100.00	50.80	11.23	50.80	0.13
29	borneol	13.72	0.00	909.99	191.11	909.99	2.27
30	terpin-4-ol	14.15	100.00	481.04	112.11	481.04	1.20
31		14.44	0.00	32.68	8.13	32.68	0.08
32		14.66	0.00	63.50	15.35	63.50	0.16
33	alpha terpineol	14.84	100.00	91.97	12.07	91.97	0.23
34		15.68	0.00	37.70	8.55	37.70	0.09
35		16.44	0.00	124.29	38.18	124.29	0.31
36	methyl carvacrol	16.81	0.00	259.54	76.30	259.54	0.65
37		17.21	0.00	54.36	6.91	54.36	0.14

4871-BBACU

Instrument 6890

C:\HPCHEM\2\DATA\2017\
48710000.DSavory
4871-BBACU
Montenegro
satureia montana
Sample/CH2CL2: 0.12g/0.37g
Injection: 0.2uLHP-5 5% Phenyl Methyl Siloxane
30.000m
250.000um
0.250um2/21/2017 2:26:13 PM
2/21/2017 2:26:13 PM5/30/2017
5:05:23 PM

#	Compound Name	Meas. Ret.	Amount	Response	Height	Area	Area %
38	thymol	19.28	0.00	17449.01	1161.55	17449.01	43.58
39	cavacrol	19.47	100.00	1740.23	373.76	1740.23	4.35
40		21.25	0.00	134.15	40.84	134.15	0.34
41		22.39	0.00	24.89	6.23	24.89	0.06
42	beta caryophyllene	23.75	100.00	947.34	232.18	947.34	2.37
43		24.37	0.00	15.06	5.31	15.06	0.04
44		24.44	0.00	79.12	21.04	79.12	0.20
45		24.99	0.00	43.21	11.75	43.21	0.11
46		25.20	0.00	41.82	7.78	41.82	0.10
47		25.89	0.00	46.79	13.31	46.79	0.12
48		26.21	0.00	26.73	5.38	26.73	0.07
49		26.57	0.00	83.19	20.28	83.19	0.21
50	epi-cubebol	27.21	814.59	1680.35	342.51	1680.35	4.20
51	cubebol	27.30	9.74	50.54	10.51	50.54	0.13
52		27.65	0.00	101.60	26.27	101.60	0.25
53		28.36	0.00	53.57	13.71	53.57	0.13
54	thymohydro quinone	29.02	0.00	321.54	41.81	321.54	0.80
55		29.56	0.00	54.72	13.78	54.72	0.14
56		29.73	0.00	288.45	70.66	288.45	0.72
57		32.83	0.00	28.07	5.10	28.07	0.07
58		33.29	0.00	23.41	5.80	23.41	0.06
59		40.36	0.00	60.91	16.04	60.91	0.15
60		46.97	0.00	35.96	9.57	35.96	0.09
61		47.12	0.00	49.56	13.18	49.56	0.12





40

40.359

46.973
47.119

50

60

70

min