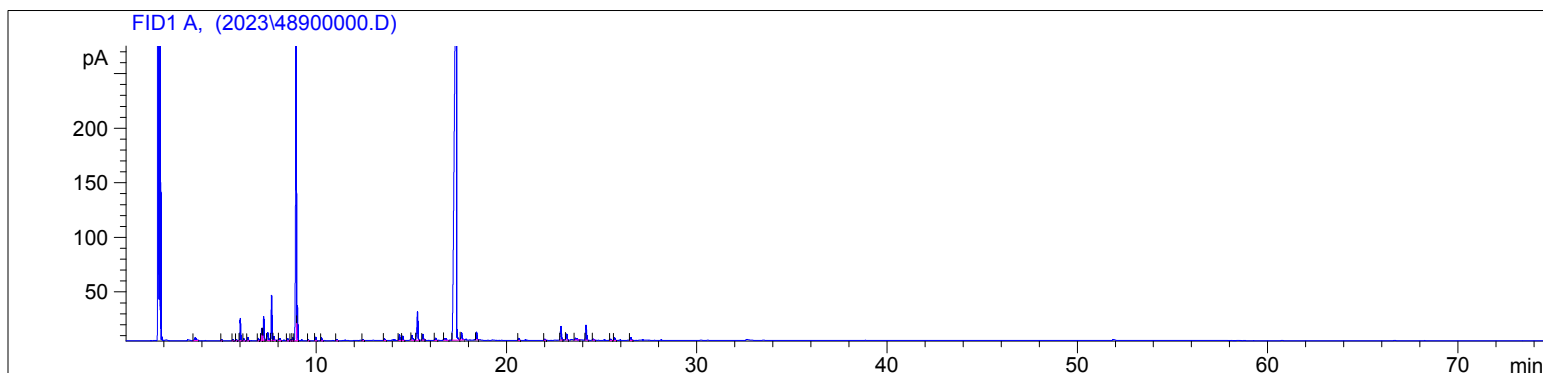


4890

Instrument 6890

C:\HPCHEM\2\DATA\2023\
48900000.DSpearment FT Organic
4890-BZFN
India
Mentha spicata
Sample/Solvent: 0.07g/0.53g
Injection Amount: 0.2uL
15:1 Split RatioHP-5 5% Phenyl Methyl Siloxane
30.000m
250.000um
0.250um2/7/2023 10:53:11 AM
2/7/2023 10:53:11 AM2/7/2023
2:18:07 PM

#	Compound Name	Meas. Ret.	Amount	Response	Height	Area	Area %
1		3.63	0.00	17.50	2.71	17.50	0.38
2		5.02	0.00	2.46	1.16	2.46	0.05
3		5.61	0.00	2.42	1.00	2.42	0.05
4		5.81	0.00	2.12	0.85	2.12	0.05
5	alpha pinene	6.00	0.00	51.39	20.34	51.39	1.11
6		6.19	0.00	4.58	1.73	4.58	0.10
7		6.40	0.00	8.10	2.94	8.10	0.17
8		6.95	0.00	6.23	2.16	6.23	0.13
9	sabinene	7.12	0.00	27.41	10.58	27.41	0.59
10	beta pinene	7.17	0.00	12.01	6.00	12.01	0.26
11		7.23	0.00	59.96	21.77	59.96	1.29
12		7.44	0.00	27.29	7.27	27.29	0.59
13	myrcene	7.64	0.00	109.17	41.45	109.17	2.36
14	3-octanol	7.77	0.00	8.60	3.53	8.60	0.19
15		8.07	0.00	7.18	1.87	7.18	0.16
16		8.50	0.00	4.61	1.69	4.61	0.10
17		8.67	0.00	3.23	1.18	3.23	0.07
18		8.76	0.00	7.83	2.65	7.83	0.17
19	d-limonene	8.94	0.00	843.66	275.45	843.66	18.21
20	1.8 cineol	9.00	0.00	77.15	31.84	77.15	1.67
21		9.59	0.00	2.24	0.80	2.24	0.05
22	gamma terpinene	9.98	0.00	8.94	3.07	8.94	0.19
23	cis-sabinene hydrate	10.28	0.00	7.48	2.48	7.48	0.16
24		11.08	0.00	3.81	1.13	3.81	0.08
25		12.46	0.00	2.29	0.79	2.29	0.05
26	menthone	13.59	0.00	4.80	1.51	4.80	0.10
27	menthol	14.38	0.00	18.87	5.39	18.87	0.41
28	terpinen-4-ol	14.55	0.00	12.55	3.95	12.55	0.27
29		15.03	0.00	21.15	4.40	21.15	0.46
30	cis-hydro carvone	15.33	0.00	98.19	25.97	98.19	2.12
31		15.62	0.00	16.53	5.32	16.53	0.36
32		16.29	0.00	9.04	2.01	9.04	0.20
33		16.82	0.00	10.03	1.45	10.03	0.22
34	carvone	17.37	0.00	2925.84	427.00	2925.84	63.15
35	carvone oxide	17.64	0.00	25.28	6.42	25.28	0.55
36		18.43	0.00	24.81	7.05	24.81	0.54

4890

Instrument 6890

C:\HPCHEM\2\DATA\2023\
48900000.D

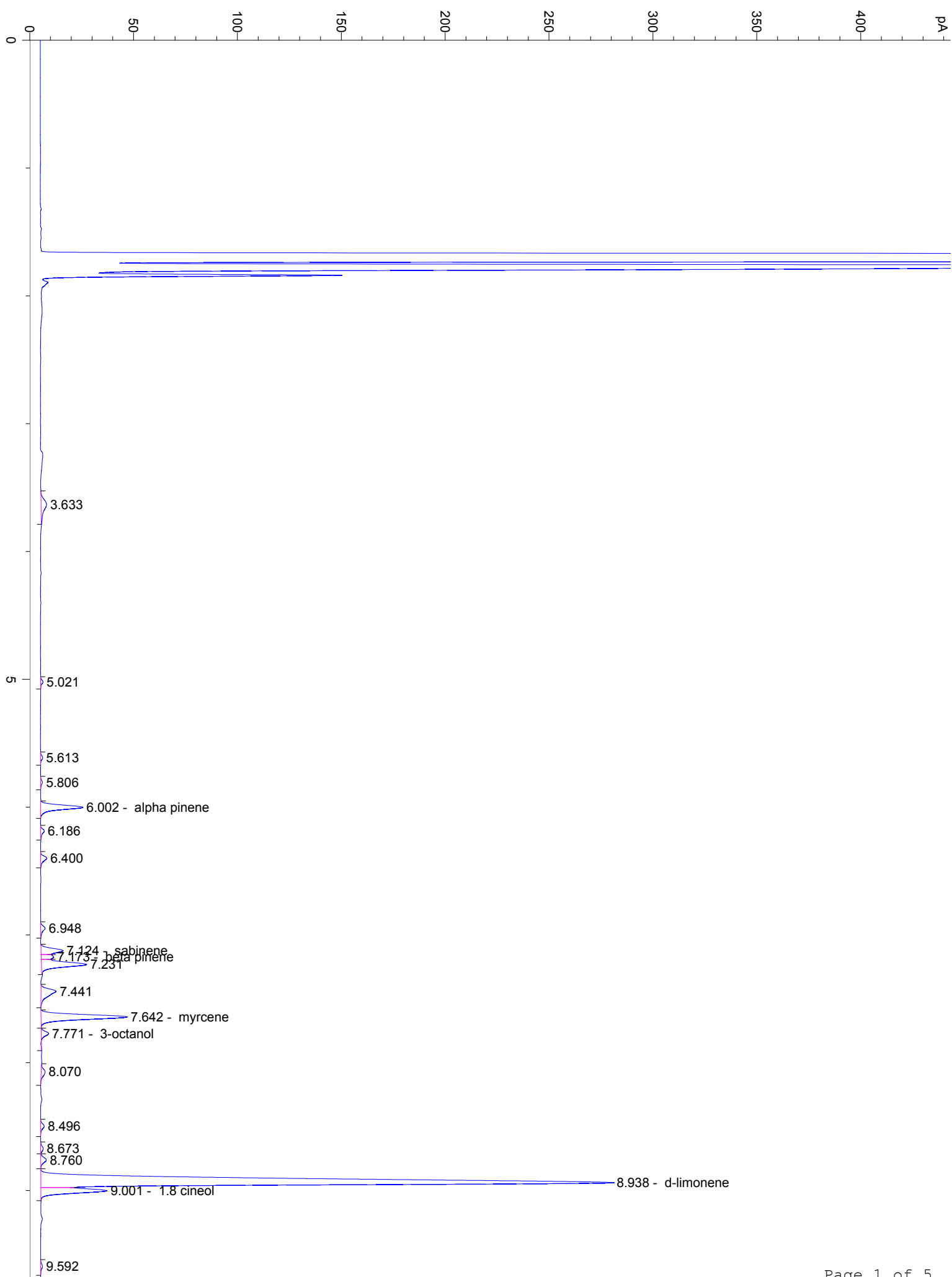
Spearmint Organic
4890-BZFN
India
Mentha spicata
Sample/Solvent: 0.07g/0.53g
Injection Amount: 0.2uL
15:1 Split Ratio

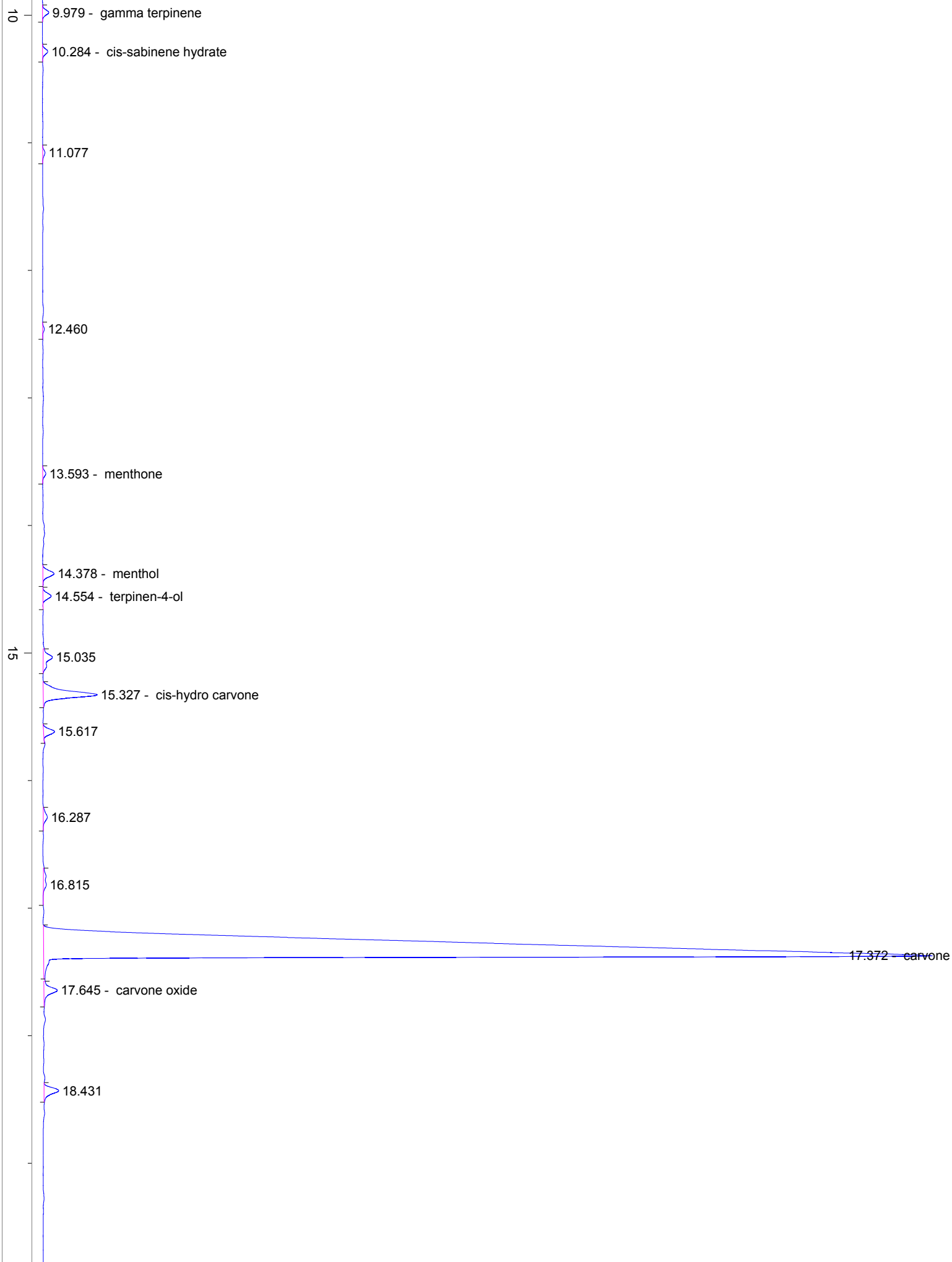
HP-5 5% Phenyl Methyl Siloxane
30.000m
250.000um
0.250um

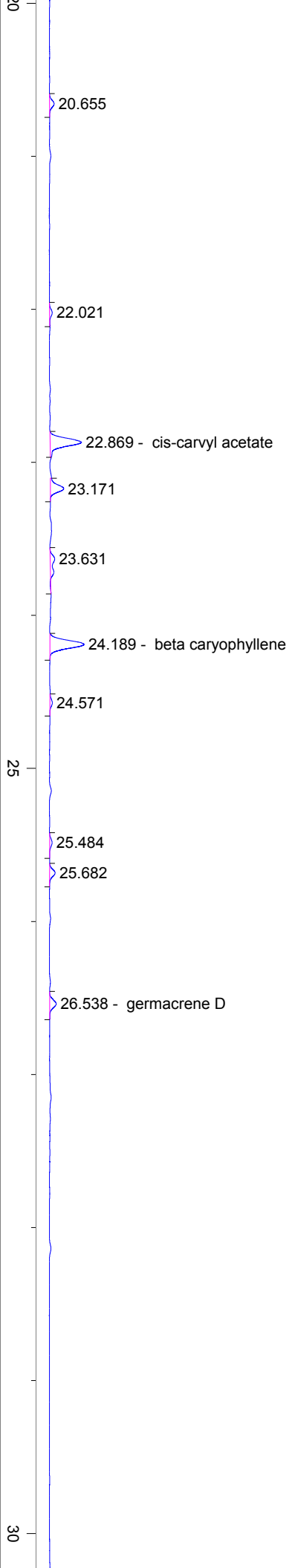
2/7/2023 10:53:11 AM
2/7/2023 10:53:11 AM

2/7/2023
2:18:07 PM

#	Compound Name	Meas. Ret.	Amount	Response	Height	Area	Area %
37		20.66	0.00	6.14	1.83	6.14	0.13
38		22.02	0.00	3.57	1.05	3.57	0.08
39	cis-carvyl acetate	22.87	0.00	45.73	12.60	45.73	0.99
40		23.17	0.00	18.36	5.33	18.36	0.40
41		23.63	0.00	10.69	1.81	10.69	0.23
42	beta caryophyllene	24.19	0.00	49.62	13.71	49.62	1.07
43		24.57	0.00	3.19	0.97	3.19	0.07
44		25.48	0.00	3.57	1.03	3.57	0.08
45		25.68	0.00	7.37	2.20	7.37	0.16
46	germacrene D	26.54	0.00	9.89	2.65	9.89	0.21







35

40

45

min