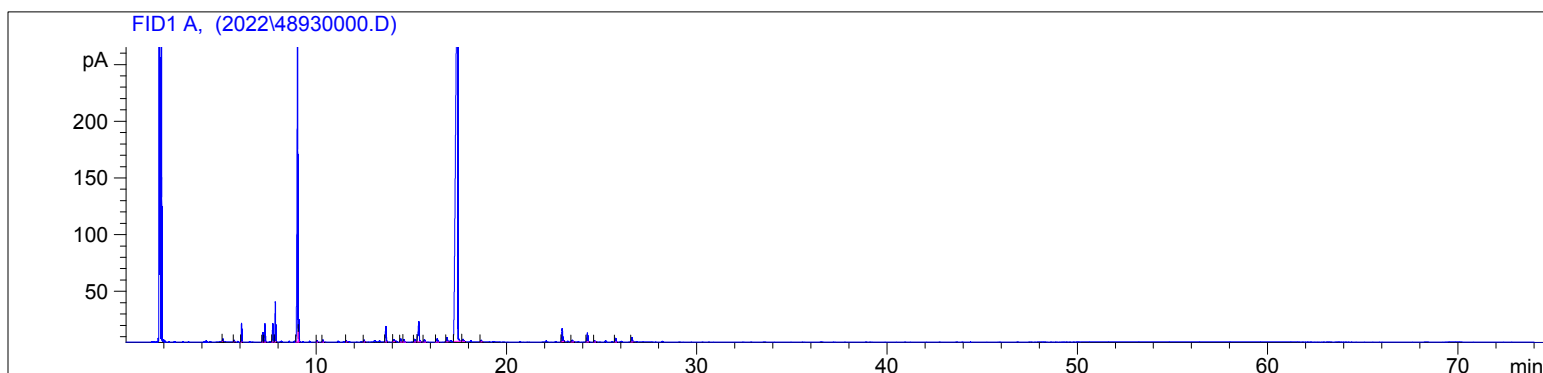


Spearmint, Scotch
4893-IBCL-2
USA
Mentha gracilis
Injection Amount: 0.2uL
20:1 Split Ratio

HP-5 5% Phenyl Methyl Siloxane
30.000m
250.000um
0.250um

9/27/2022 11:53:20 AM
9/27/2022 11:53:20 AM

9/27/2022
1:47:48 PM



#	Compound Name	Meas. Ret.	Amount	Response	Height	Area	Area %
1		5.08	0.00	4.48	2.33	4.48	0.11
2		5.68	0.00	3.32	1.56	3.32	0.08
3	alpha pinene	6.07	0.00	36.63	16.62	36.63	0.88
4	sabinene	7.19	0.00	20.17	8.47	20.17	0.48
5	beta pinene	7.30	0.00	40.53	16.38	40.53	0.97
6	myrcene	7.71	0.00	38.86	16.22	38.86	0.93
7	3-octanol	7.84	0.00	87.59	35.54	87.59	2.09
8	d-limonene	9.01	0.00	776.21	265.28	776.21	18.55
9	1,8-cineol	9.07	0.00	46.35	19.80	46.35	1.11
10	gamma terpinene	10.05	0.00	3.73	1.37	3.73	0.09
11	cis-sabinene hydrate	10.36	0.00	5.40	1.90	5.40	0.13
12		11.59	0.00	3.14	1.14	3.14	0.08
13		12.53	0.00	5.28	1.89	5.28	0.13
14	menthone	13.67	0.00	42.66	13.66	42.66	1.02
15		14.08	0.00	7.07	1.87	7.07	0.17
16		14.45	0.00	10.45	2.79	10.45	0.25
17		14.62	0.00	8.02	2.28	8.02	0.19
18		15.18	0.00	8.06	2.50	8.06	0.19
19	menthol	15.40	0.00	75.41	17.93	75.41	1.80
20		15.69	0.00	7.69	2.26	7.69	0.18
21	cis-dihydro-carvone	16.36	0.00	13.22	2.96	13.22	0.32
22		16.88	0.00	14.25	3.76	14.25	0.34
23	carvone	17.44	0.00	2804.83	414.75	2804.83	67.04
24	carvone oxide	17.72	0.00	8.06	1.90	8.06	0.19
25		18.68	0.00	5.01	1.41	5.01	0.12
26	beta caryophyllene	22.93	0.00	42.25	11.60	42.25	1.01
27		23.46	0.00	7.34	1.71	7.34	0.18
28	alpha humulene	24.26	0.00	29.20	7.93	29.20	0.70
29		24.63	0.00	3.67	1.19	3.67	0.09
30	germacrene D	25.74	0.00	11.45	3.40	11.45	0.27
31		26.60	0.00	13.57	3.68	13.57	0.32

