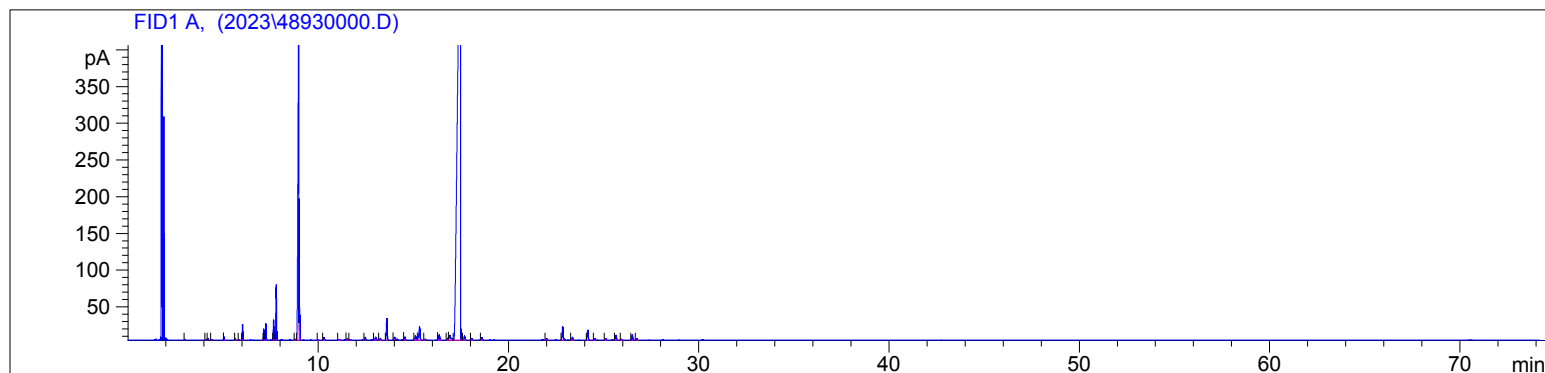


Spearmint Scotch Conv.
4893-JZIN
USA
Mentha gracilis
Sample/Solvent: 0.08g/0.51g
Injection Amount: 0.2uL
20:1 Split Ratio

HP-5 5% Phenyl Methyl Siloxane
30.000m
250.000um
0.250um

10/10/2023 1:06:57 PM
10/10/2023 1:06:57 PM

10/10/2023
2:36:42 PM



#	Compound Name	Meas. Ret.	Amount	Response	Height	Area	Area %
1		2.98	0.00	2.02	1.53	2.02	0.02
2		4.07	0.00	1.45	0.93	1.45	0.02
3		4.19	0.00	3.58	1.93	3.58	0.04
4		4.39	0.00	2.14	0.93	2.14	0.02
5		5.05	0.00	8.40	4.30	8.40	0.09
6		5.64	0.00	4.68	2.16	4.68	0.05
7		5.83	0.00	1.71	0.81	1.71	0.02
8	alpha pinene	6.03	0.00	47.97	21.61	47.97	0.54
9	sabinene	7.15	0.00	37.48	15.52	37.48	0.42
10	beta pinene	7.25	0.00	56.17	22.53	56.17	0.63
11	myrcene	7.66	0.00	66.61	27.47	66.61	0.75
12	3-octanol	7.80	0.00	190.12	75.40	190.12	2.14
13		8.78	0.00	4.15	1.52	4.15	0.05
14	d-limonene	8.97	0.00	1328.44	406.22	1328.44	14.93
15	1.8 cineol	9.03	0.00	96.82	44.75	96.82	1.09
16	gamma terpinene	9.99	0.00	2.84	1.08	2.84	0.03
17	cis-sabinene hydrate	10.29	0.00	10.56	3.64	10.56	0.12
18		11.10	0.00	5.00	1.28	5.00	0.06
19		11.52	0.00	7.48	2.21	7.48	0.08
20		11.68	0.00	3.07	1.07	3.07	0.03
21		12.46	0.00	11.75	4.07	11.75	0.13
22		13.01	0.00	16.55	3.72	16.55	0.19
23		13.25	0.00	9.16	2.53	9.16	0.10
24	menthone	13.59	0.00	92.45	29.62	92.45	1.04
25		14.00	0.00	10.32	3.28	10.32	0.12
26		14.55	0.00	13.90	4.32	13.90	0.16
27		15.10	0.00	21.27	5.48	21.27	0.24
28	menthol	15.32	0.00	76.66	18.20	76.66	0.86
29		15.61	0.00	5.26	1.46	5.26	0.06
30	cis-dihydro carvone	16.35	0.00	29.99	7.52	29.99	0.34
31		16.80	0.00	10.82	2.57	10.82	0.12
32		16.91	0.00	40.40	6.42	40.40	0.45
33	carvone	17.46	0.00	6427.44	651.46	6427.44	72.25
34	carvone oxide	17.67	0.00	21.37	5.51	21.37	0.24
35		18.06	0.00	7.39	2.02	7.39	0.08
36		18.60	0.00	11.58	3.38	11.58	0.13
37		21.99	0.00	7.25	2.22	7.25	0.08
38	beta caryophyllene	22.84	0.00	69.46	18.70	69.46	0.78
39		23.34	0.00	14.03	3.93	14.03	0.16
40	alpha humulene	24.16	0.00	47.93	13.59	47.93	0.54

4893

Instrument 6890

C:\HPCHEM\2\DATA\2023\
48930000.D

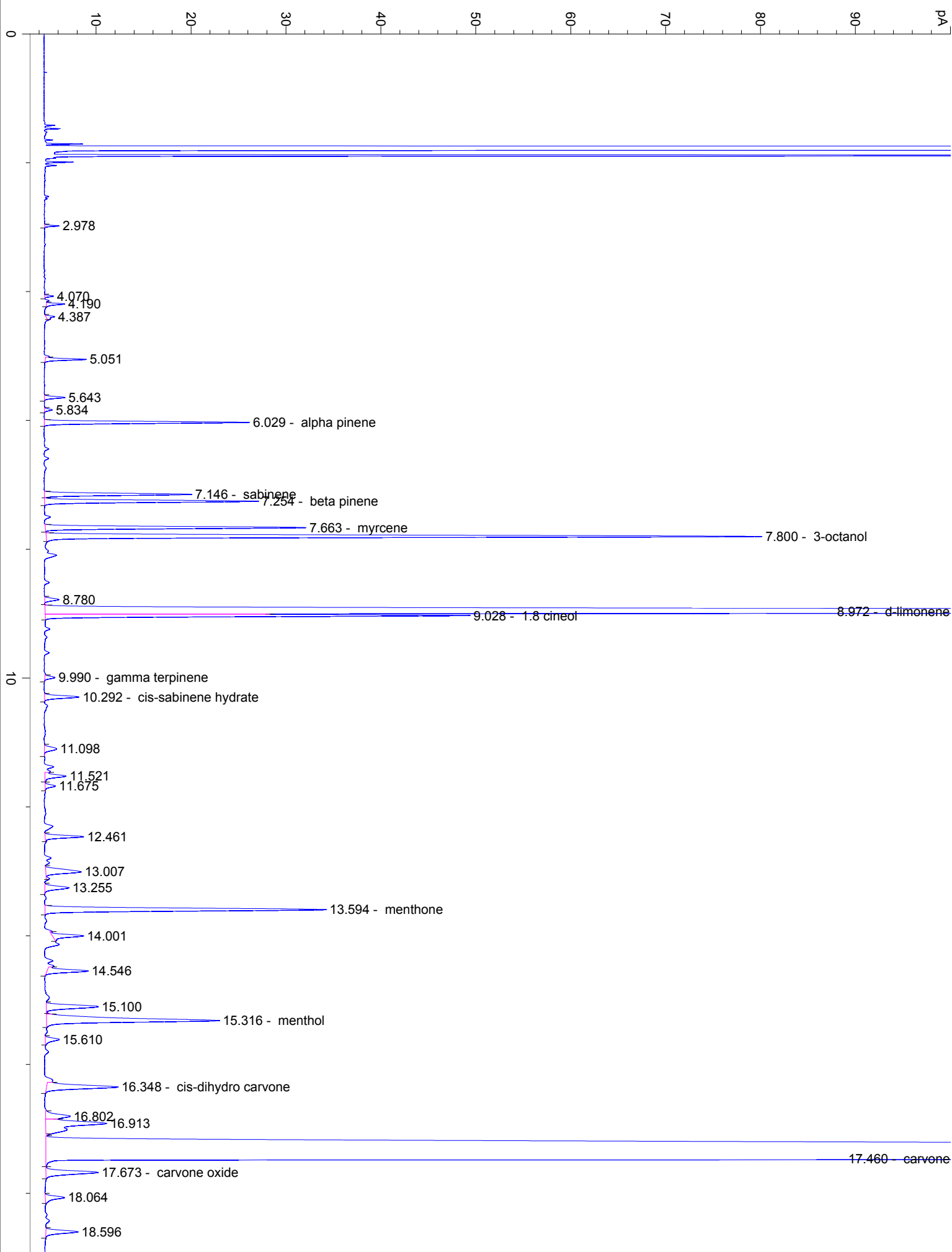
Spearmint Scotch Conv.
4893-JZIN
USA
Mentha gracilis
Sample/Solvent: 0.08g/0.51g
Injection Amount: 0.2uL
20:1 Split Ratio

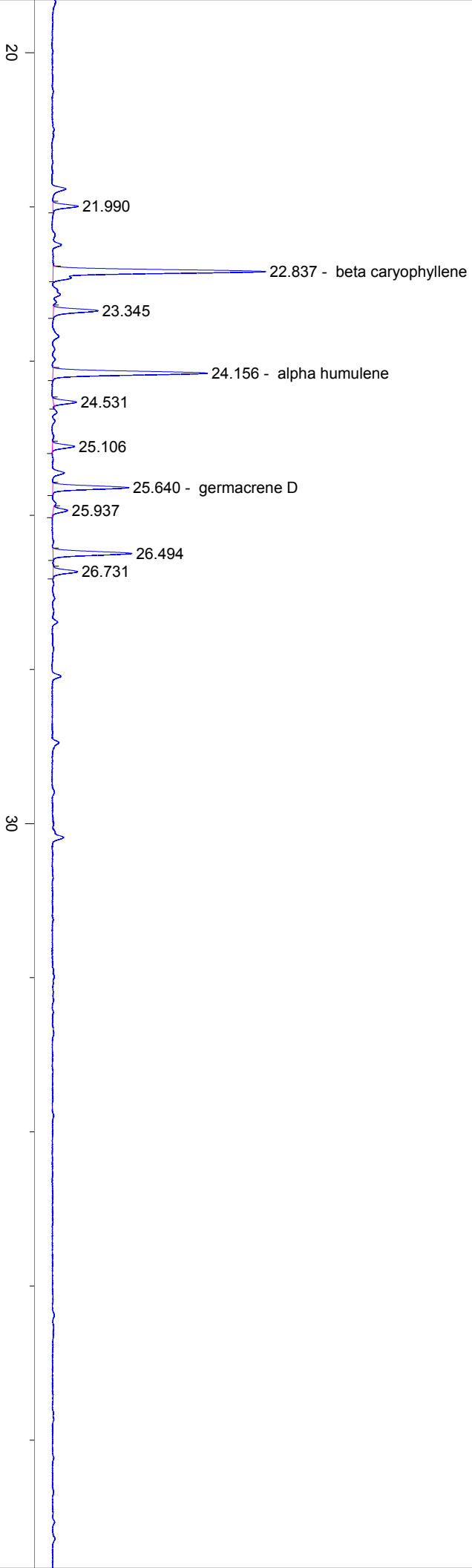
HP-5 5% Phenyl Methyl Siloxane
30.000m
250.000um
0.250um

10/10/2023 1:06:57 PM
10/10/2023 1:06:57 PM

10/10/2023
2:36:42 PM

#	Compound Name	Meas. Ret.	Amount	Response	Height	Area	Area %
41		24.53	0.00	6.53	2.03	6.53	0.07
42		25.11	0.00	6.67	1.95	6.67	0.07
43	germacrene D	25.64	0.00	21.83	6.68	21.83	0.25
44		25.94	0.00	4.31	1.27	4.31	0.05
45		26.49	0.00	24.10	6.93	24.10	0.27
46		26.73	0.00	7.41	2.13	7.41	0.08





40

50

min