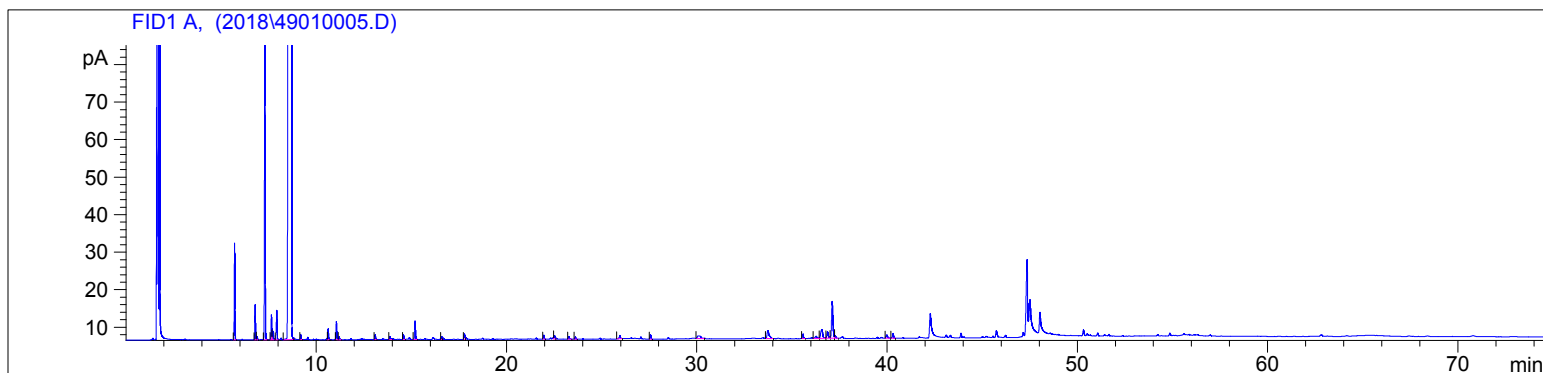


Tangerine (Organic)  
4901-CCZEX  
Argentina  
citrus reticulata  
Sample/Solvent: 0.06g/0.60g  
Injection: 0.2uL  
15:1 Split Ratio

HP-5 5% Phenyl Methyl Siloxane  
30.000m  
250.000um  
0.250um

3/8/2018 10:23:14 AM  
3/8/2018 10:23:14 AM

3/8/2018  
1:53:22 PM



#	Compound Name	Meas. Ret.	Amount	Response	Height	Area	Area %
1	alpha thujene	0.00	0.00	0.00	0.00	0.00	0.00
2	alpha pinene	5.70	100.00	57.87	25.73	57.87	0.52
3	sabinene	6.78	100.00	23.13	9.40	23.13	0.21
4	beta pinene	6.89	100.00	2.25	0.83	2.25	0.02
5	myrcene	7.29	100.00	215.35	85.17	215.35	1.92
6	n-octanal	7.64	100.00	18.04	6.61	18.04	0.16
7	para-mentha-1(7(,8)-diene	7.72	100.00	6.78	2.26	6.78	0.06
8	alpha terpinene	7.91	100.00	22.06	7.83	22.06	0.20
9	d-limonene	8.70	100.00	10667.81	1593.90	10667.81	95.09
10	trans beta ocimene	9.20	100.00	3.29	1.33	3.29	0.03
11	gamma terpinene	0.00	0.00	0.00	0.00	0.00	0.00
12	terpinolene	10.64	100.00	8.07	2.85	8.07	0.07
13	linalool	11.07	100.00	13.94	4.79	13.94	0.12
14	nonanal	11.22	100.00	2.45	0.83	2.45	0.02
15	cis-limonene oxide	0.00	0.00	0.00	0.00	0.00	0.00
16	trans-limonene oxide	0.00	0.00	0.00	0.00	0.00	0.00
17	citonellal	13.11	100.00	3.95	1.30	3.95	0.04
18	terpin-4-ol	13.88	41.16	2.90	0.77	2.90	0.03
19	alpha terpineol	14.59	100.00	3.82	1.20	3.82	0.03
20	n-decanal	15.21	100.00	15.37	4.92	15.37	0.14
21	trans-carveol	0.00	0.00	0.00	0.00	0.00	0.00
22	cis-carveol	0.00	0.00	0.00	0.00	0.00	0.00
23	carvone	16.60	100.00	2.47	0.75	2.47	0.02
24		17.80	100.00	4.81	1.40	4.81	0.04
25	thymol	0.00	0.00	0.00	0.00	0.00	0.00
26	trans-carvyl acetate	0.00	0.00	0.00	0.00	0.00	0.00
27	geranyl acetate	21.97	100.00	3.61	1.08	3.61	0.03
28		22.53	100.00	3.59	0.94	3.59	0.03
29	dodecanal	23.28	100.00	2.89	0.71	2.89	0.03
30	beta caryophyllene	23.63	100.00	2.08	0.58	2.08	0.02
31	valencene	25.97	100.00	3.55	0.90	3.55	0.03
32		27.58	100.00	4.16	1.21	4.16	0.04
33		35.59	100.00	4.30	1.21	4.30	0.04
34	alpha sinensal	37.13	100.00	47.96	9.84	47.96	0.43
35		39.99	100.00	5.20	0.93	5.20	0.05



20

21.969 - geranyl acetate

22.532

23.284 - dodecanal

23.627 - beta caryophyllene

25.968 - valencene

27.577

30

30.075

33.746

35.591

36.272

36.584

36.881

37.127 - alpha sinensal

37.273

40

39.990

40.327

50

60

70

min