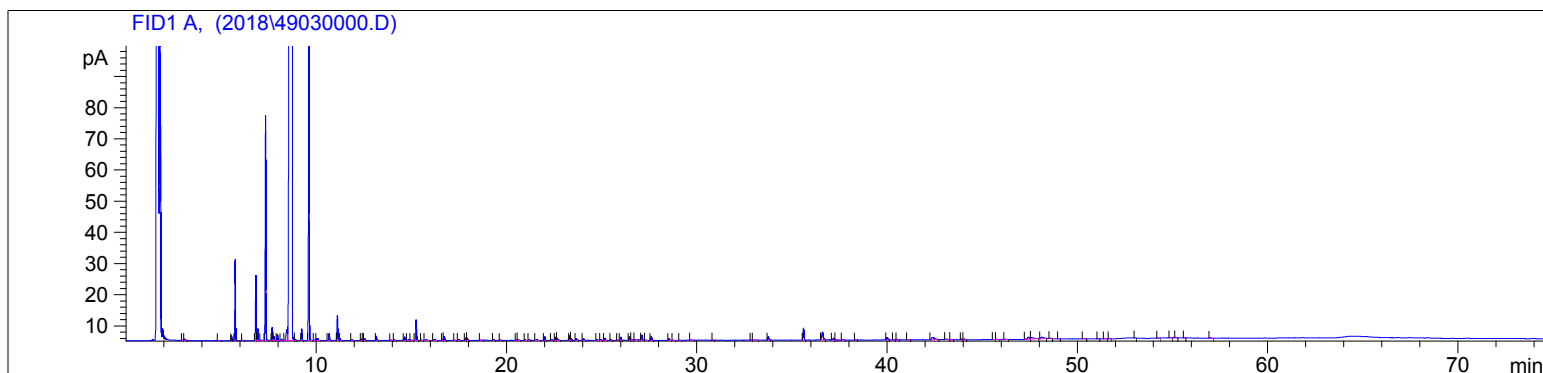


Tangerine
4903-CCACX
USA
citrus reticulata
Sample/Solvent: 0.05g/0.54g
Injection: 0.2uL
15:1 Split Ratio

HP-5 5% Phenyl Methyl Siloxane
30.000m
250.000um
0.250um

3/14/2018 12:57:47 PM
3/14/2018 12:57:47 PM

7/19/2018
11:11:34 AM



#	Compound Name	Meas. Ret.	Amount	Response	Height	Area	Area %
1		3.00	100.00	0.65	0.12	0.65	0.01
2		3.07	100.00	1.72	0.42	1.72	0.02
3		4.86	100.00	0.51	0.11	0.51	0.01
4	alpha thujene	5.54	100.00	3.32	1.53	3.32	0.03
5	alpha pinene	5.73	100.00	58.72	26.02	58.72	0.58
6		6.13	100.00	0.45	0.15	0.45	0.00
7	sabinene	6.82	100.00	51.13	20.89	51.13	0.51
8	beta pinene	6.92	100.00	9.70	3.70	9.70	0.10
9		7.13	100.00	1.12	0.21	1.12	0.01
10	myrcene	7.33	100.00	180.25	72.05	180.25	1.79
11	n-octanal	7.68	100.00	11.13	4.13	11.13	0.11
12		7.76	100.00	3.81	1.27	3.81	0.04
13	delta-3-carene	7.95	100.00	5.26	1.90	5.26	0.05
14		8.17	100.00	1.72	0.52	1.72	0.02
15	para cymene	8.45	100.00	17.84	3.42	17.84	0.18
16	limonene	8.72	100.00	922.74	1454.48	922.74	91.62
17	cis-beta ocimene	8.89	100.00	1.16	0.35	1.16	0.01
18	trans-beta ocimene	9.24	100.00	9.21	3.67	9.21	0.09
19	gamma terpinene	9.62	100.00	263.31	99.80	263.31	2.61
20		9.91	100.00	0.45	0.16	0.45	0.00
21		10.05	100.00	3.62	0.68	3.62	0.04
22	terpinolene	10.68	100.00	6.54	2.21	6.54	0.06
23	linalool	11.12	100.00	23.01	7.91	23.01	0.23
24	nonanal	11.27	100.00	1.80	0.60	1.80	0.02
25		11.88	100.00	0.89	0.29	0.89	0.01
26	cis-limonene oxide	12.37	100.00	1.29	0.43	1.29	0.01
27		12.44	100.00	0.79	0.25	0.79	0.01
28	trans-limonene oxide	12.55	100.00	1.85	0.63	1.85	0.02
29	citronellal	13.16	100.00	4.18	1.37	4.18	0.04
30		13.94	100.00	0.92	0.23	0.92	0.01
31	terpin-4-ol	14.10	100.00	0.98	0.28	0.98	0.01
32	alpha terpineol	14.65	100.00	3.86	1.18	3.86	0.04
33		14.85	100.00	1.23	0.22	1.23	0.01
34		14.98	100.00	0.94	0.21	0.94	0.01
35	n-decanal	15.26	100.00	20.59	6.60	20.59	0.20
36		15.54	100.00	0.62	0.17	0.62	0.01

Tangerine
4903-CCACX
USA
citrus reticulata
Sample/Solvent: 0.05g/0.54g
Injection: 0.2uL
15:1 Split Ratio

HP-5 5% Phenyl Methyl Siloxane
30.000m
250.000um
0.250um

3/14/2018 12:57:47 PM
3/14/2018 12:57:47 PM

7/19/2018
11:11:34 AM

#	Compound Name	Meas. Ret.	Amount	Response	Height	Area	Area %
37	trans-carveol	15.79	100.00	1.84	0.33	1.84	0.02
38	cis-carveol	16.21	100.00	1.88	0.28	1.88	0.02
39		16.66	100.00	0.99	0.34	0.99	0.01
40	carvone	16.73	100.00	4.42	1.27	4.42	0.04
41		17.29	100.00	0.63	0.16	0.63	0.01
42		17.49	100.00	0.78	0.25	0.78	0.01
43		17.85	100.00	2.58	0.73	2.58	0.03
44		17.94	100.00	2.90	0.69	2.90	0.03
45	thymol	18.65	100.00	0.54	0.14	0.54	0.01
46		19.34	100.00	0.68	0.21	0.68	0.01
47		19.68	100.00	0.79	0.17	0.79	0.01
48		20.53	100.00	0.76	0.24	0.76	0.01
49		20.60	100.00	1.27	0.29	1.27	0.01
50		20.99	100.00	0.71	0.21	0.71	0.01
51		21.19	100.00	0.58	0.17	0.58	0.01
52		21.62	100.00	1.79	0.35	1.79	0.02
53		22.01	100.00	3.90	1.17	3.90	0.04
54		22.37	100.00	1.17	0.32	1.17	0.01
55		22.58	100.00	3.42	0.98	3.42	0.03
56		22.66	100.00	3.11	0.73	3.11	0.03
57		23.33	100.00	4.45	1.36	4.45	0.04
58		23.40	100.00	1.57	0.45	1.57	0.02
59		23.67	100.00	1.60	0.46	1.60	0.02
60		24.05	100.00	2.09	0.59	2.09	0.02
61		24.76	100.00	0.61	0.18	0.61	0.01
62		24.96	100.00	0.91	0.27	0.91	0.01
63		25.18	100.00	2.58	0.70	2.58	0.03
64		25.50	100.00	0.91	0.27	0.91	0.01
65		25.86	100.00	0.42	0.11	0.42	0.00
66		26.01	100.00	3.40	0.98	3.40	0.03
67		26.47	100.00	3.98	1.14	3.98	0.04
68		26.60	100.00	1.14	0.23	1.14	0.01
69		26.77	100.00	0.75	0.16	0.75	0.01
70	valencene	27.11	100.00	5.27	1.59	5.27	0.05
71		27.31	100.00	0.45	0.10	0.45	0.00
72		27.61	100.00	4.78	1.32	4.78	0.05
73		28.55	100.00	1.71	0.47	1.71	0.02
74		28.77	100.00	0.46	0.12	0.46	0.00
75		29.12	100.00	0.28	0.08	0.28	0.00
76		29.72	100.00	0.55	0.10	0.55	0.01
77		30.84	100.00	0.28	0.09	0.28	0.00
78		32.87	100.00	0.30	0.09	0.30	0.00
79		33.05	100.00	1.10	0.15	1.10	0.01
80		33.76	100.00	3.67	1.03	3.67	0.04
81	alpha sinensal	35.62	100.00	13.75	3.83	13.75	0.14
82		36.61	100.00	13.16	2.47	13.16	0.13
83		37.18	100.00	2.61	0.53	2.61	0.03
84		37.29	100.00	0.51	0.13	0.51	0.01
85		37.68	100.00	0.83	0.20	0.83	0.01
86		38.35	100.00	0.48	0.12	0.48	0.00
87		40.01	100.00	3.38	0.80	3.38	0.03
88		40.36	100.00	0.42	0.12	0.42	0.00
89		40.54	100.00	0.74	0.20	0.74	0.01
90		41.07	100.00	0.45	0.11	0.45	0.00
91		42.39	100.00	8.37	0.72	8.37	0.08

4903-CCACX

Instrument 6890

C:\HPCHEM\2\DATA\2018\
49030000.D

Tangerine
4903-CCACX
USA
citrus reticulata
Sample/Solvent: 0.05g/0.54g
Injection: 0.2uL
15:1 Split Ratio

HP-5 5% Phenyl Methyl Siloxane
30.000m
250.000um
0.250um

3/14/2018 12:57:47 PM
3/14/2018 12:57:47 PM

7/19/2018
11:11:34 AM

#	Compound Name	Meas. Ret.	Amount	Response	Height	Area	Area %
92		43.14	100.00	1.37	0.21	1.37	0.01
93		43.36	100.00	0.52	0.10	0.52	0.01
94		43.92	100.00	0.88	0.23	0.88	0.01
95		44.06	100.00	0.97	0.23	0.97	0.01
96		45.59	100.00	0.30	0.07	0.30	0.00
97		45.78	100.00	0.53	0.11	0.53	0.01
98		46.25	100.00	0.60	0.13	0.60	0.01
99		47.44	100.00	4.61	0.58	4.61	0.05
100		47.62	100.00	5.64	0.44	5.64	0.06
101		48.13	100.00	4.55	0.47	4.55	0.05
102		48.59	100.00	0.71	0.20	0.71	0.01
103		49.02	100.00	0.29	0.08	0.29	0.00
104		50.36	100.00	0.71	0.15	0.71	0.01
105		51.09	100.00	0.57	0.14	0.57	0.01
106		51.45	100.00	0.63	0.14	0.63	0.01
107		51.68	100.00	0.68	0.18	0.68	0.01
108		53.02	100.00	0.35	0.10	0.35	0.00
109		54.24	100.00	0.38	0.10	0.38	0.00
110		54.89	100.00	0.46	0.11	0.46	0.00
111		55.17	100.00	0.60	0.13	0.60	0.01
112		55.63	100.00	0.29	0.08	0.29	0.00
113		57.01	100.00	0.69	0.14	0.69	0.01



