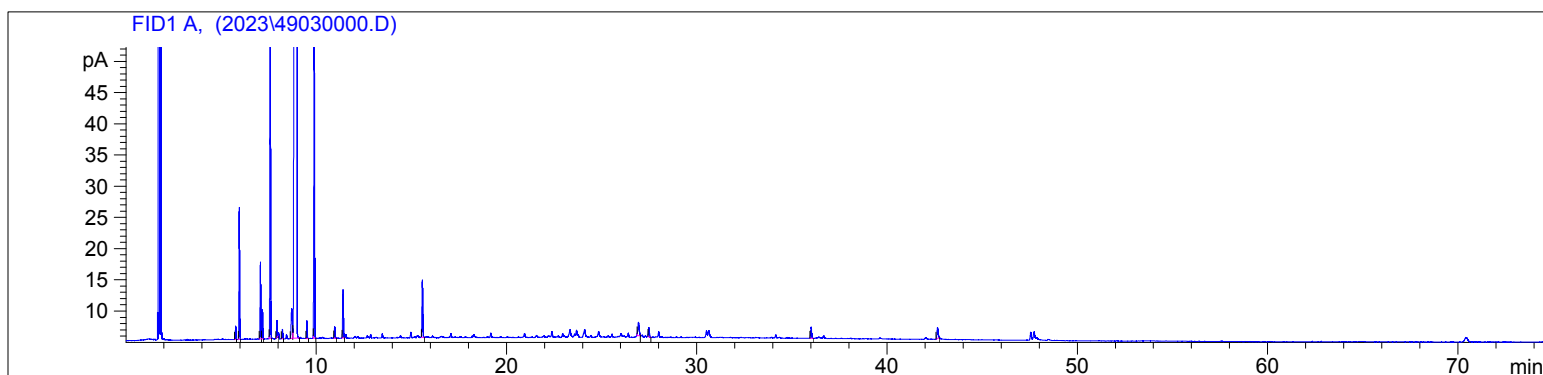


4903

Instrument 6890

C:\HPCHEM\2\DATA\2023\  
49030000.DTangerine Conventional  
4903-IBIN  
USA  
Citrus reticulata  
Sample/Solvent: 0.05g/0.50g  
Injection Amount: 0.2uL  
15:1 Split RatioHP-5 5% Phenyl Methyl Siloxane  
30.000m  
250.000um  
0.250um10/2/2023 9:55:07 AM  
10/2/2023 9:55:07 AM10/5/2023  
3:17:31 PM

#	Compound Name	Meas. Ret.	Amount	Response	Height	Area	Area %
1	alpha thujene	5.76	0.00	4.48	2.15	4.48	0.06
2	alpha pinene	5.95	0.00	47.48	21.14	47.48	0.67
3	sabinene	7.06	0.00	29.33	12.31	29.33	0.41
4	beta pinene	7.17	0.00	11.58	4.70	11.58	0.16
5	myrcene	7.58	0.00	132.16	54.71	132.16	1.85
6	n-octanal	7.93	0.00	6.13	2.68	6.13	0.09
7		8.21	0.00	3.94	1.49	3.94	0.06
8	para cymene	8.70	0.00	20.66	4.74	20.66	0.29
9	d-limonene	8.97	0.00	6644.72	1186.45	6644.72	93.18
10	trans beta ocimene	9.52	0.00	7.13	2.82	7.13	0.10
11	gamma terpinene	9.90	0.00	138.78	52.26	138.78	1.95
12	terpinolene	10.98	0.00	5.17	1.85	5.17	0.07
13	linalool	11.42	0.00	21.99	7.71	21.99	0.31
14	n-decanal	15.59	0.00	28.14	9.16	28.14	0.39
15		26.94	0.00	10.27	2.16	10.27	0.14
16	valencene	27.49	0.00	4.85	1.45	4.85	0.07
17		36.02	0.00	6.37	1.79	6.37	0.09
18		42.64	0.00	7.58	1.75	7.58	0.11



20

30

26.943

27.490 - valencene

36.020

40

42.642

50

min