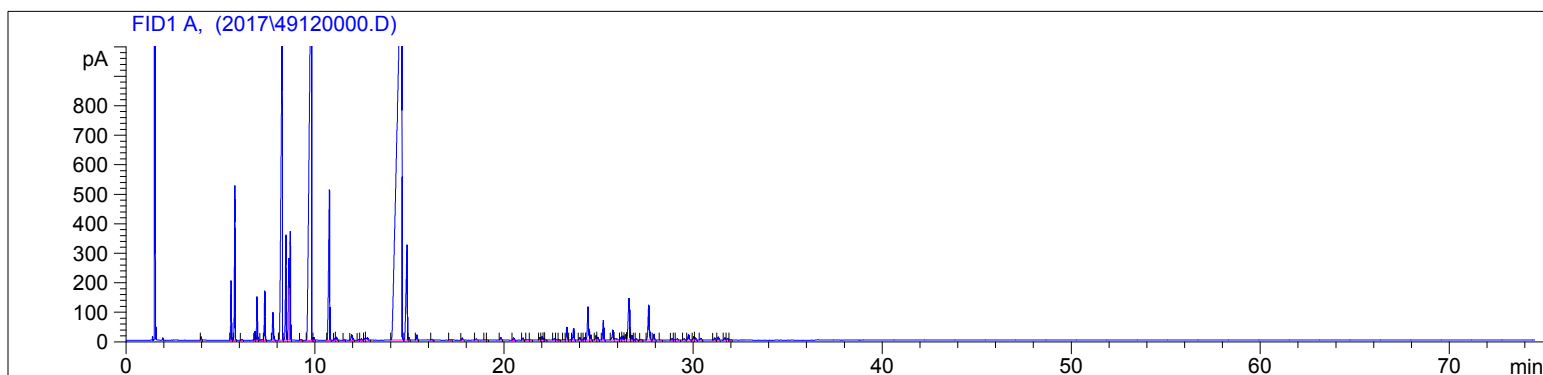


Tea Tree
4912-CCCZU
Australia
melaleuca alternifolia
Sample/CH2CL2: 0.10g/0.30g
Injection: 0.2uL

HP-5 5% Phenyl Methyl Siloxane
30.000m
250.000um
0.250um

3/31/2017 2:15:16 PM
3/31/2017 2:15:16 PM

4/3/2017
10:08:37 AM



#	Compound Name	Meas. Ret.	Amount	Response	Height	Area	Area %
1		3.97	0.00	24.03	11.04	24.03	0.05
2	alpha thujene	5.56	100.00	471.38	201.16	471.38	0.88
3	alpha pinene	5.75	100.00	1259.56	523.76	1259.56	2.36
4	camphene	6.13	100.00	6.73	2.01	6.73	0.01
5	sabinene	6.82	100.00	79.72	30.07	79.72	0.15
6	beta pinene	6.93	100.00	389.64	146.56	389.64	0.73
7		7.15	0.00	6.97	1.72	6.97	0.01
8	myrcene	7.33	100.00	457.44	167.05	457.44	0.86
9	alpha phellandrene	7.77	100.00	315.93	94.03	315.93	0.59
10	alpha terpinene	8.26	100.00	5357.14	1119.12	5357.14	10.05
11	para cymene	8.46	0.00	1092.21	356.41	1092.21	2.05
12	limonene	8.62	100.00	1031.50	276.62	1031.50	1.93
13	cineol 1.8	8.68	100.00	950.38	367.44	950.38	1.78
14		9.25	0.00	8.48	2.01	8.48	0.02
15	gamma terpinene	9.81	100.00	11195.77	1508.72	11195.77	21.00
16		9.94	0.00	21.16	8.78	21.16	0.04
17	terpinolene	10.75	100.00	1931.88	505.91	1931.88	3.62
18		11.05	0.00	16.17	5.64	16.17	0.03
19	linalool	11.12	100.00	39.55	9.87	39.55	0.07
20		11.55	0.00	4.08	1.48	4.08	0.01
21		11.93	0.00	86.27	17.51	86.27	0.16
22	menth-2-en-1-ol <cis-para>	12.30	100.00	5.97	1.72	5.97	0.01
23	menth-2-en-1-ol <trans-para>	12.44	100.00	18.01	4.14	18.01	0.03
24		12.62	0.00	25.73	5.90	25.73	0.05
25	camphor	12.76	100.00	45.39	8.03	45.39	0.09
26	terpin-4-ol	14.59	100.00	23052.69	1439.00	23052.69	43.23
27	alpha terpineol	14.87	100.00	1555.47	322.63	1555.47	2.92
28		14.96	0.00	25.00	9.39	25.00	0.05
29		15.39	0.00	53.09	17.25	53.09	0.10
30		16.19	0.00	9.34	2.68	9.34	0.02
31		17.15	0.00	4.91	1.62	4.91	0.01
32		17.78	0.00	25.68	6.70	25.68	0.05
33		18.51	0.00	15.81	4.01	15.81	0.03
34		18.99	0.00	2.97	1.02	2.97	0.01
35		19.11	0.00	3.41	1.06	3.41	0.01
36		19.82	0.00	32.84	8.41	32.84	0.06
37		20.49	0.00	24.62	6.72	24.62	0.05

4912-CCCZU

Instrument 6890

C:\HPCHEM\2\DATA\2017\
49120000.D

Tea Tree

HP-5 5% Phenyl Methyl Siloxane

4912-CCCZU

30.000m

Australia

250.000um

melaleuca alternifolia

0.250um

Sample/CH2CL2: 0.10g/0.30g

Injection: 0.2uL

3/31/2017 2:15:16 PM

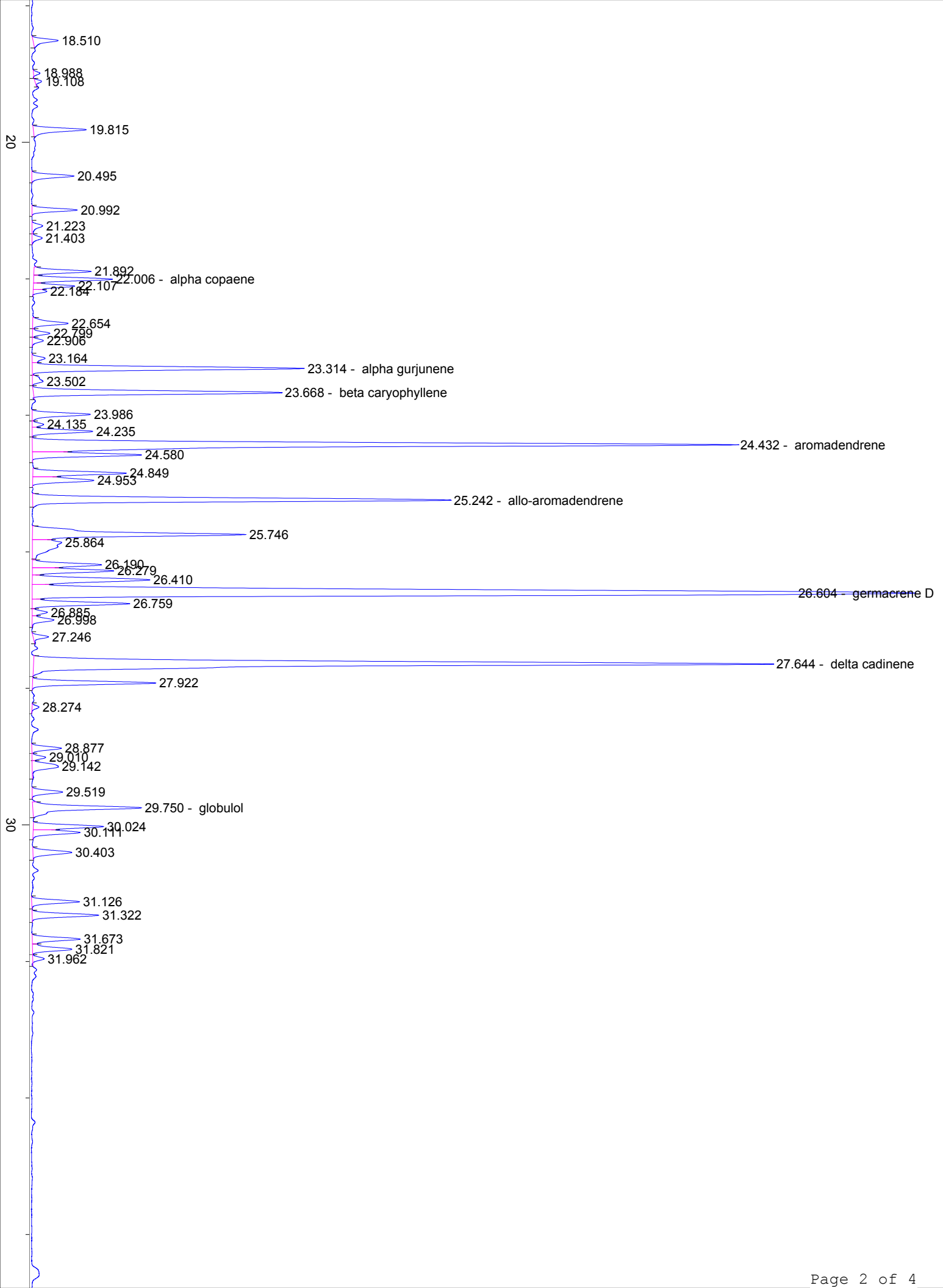
4/3/2017

3/31/2017 2:15:16 PM

10:08:37 AM

#	Compound Name	Meas. Ret.	Amount	Response	Height	Area	Area %
38		20.99	0.00	24.39	7.22	24.39	0.05
39		21.22	0.00	7.72	1.71	7.72	0.01
40		21.40	0.00	6.69	1.62	6.69	0.01
41		21.89	0.00	30.80	9.13	30.80	0.06
42	alpha copaene	22.01	100.00	42.04	12.56	42.04	0.08
43		22.11	0.00	21.80	6.59	21.80	0.04
44		22.18	0.00	6.36	2.18	6.36	0.01
45		22.65	0.00	22.82	5.67	22.82	0.04
46		22.80	0.00	9.79	2.79	9.79	0.02
47	alpha gurjunene	23.31	100.00	155.07	43.35	155.07	0.29
48		23.50	0.00	8.82	1.71	8.82	0.02
49	beta caryophyllene	23.67	100.00	145.77	39.57	145.77	0.27
50		23.99	0.00	33.72	9.26	33.72	0.06
51		24.13	0.00	5.98	1.82	5.98	0.01
52		24.24	0.00	34.34	9.65	34.34	0.06
53	aromadendrene	24.43	100.00	486.78	112.35	486.78	0.91
54		24.58	0.00	59.37	17.38	59.37	0.11
55		24.85	0.00	53.61	14.89	53.61	0.10
56		24.95	0.00	40.53	9.74	40.53	0.08
57	allo-aromadendrene	25.24	100.00	252.60	66.61	252.60	0.47
58		25.75	0.00	144.89	34.01	144.89	0.27
59		25.86	0.00	45.55	4.65	45.55	0.09
60		26.19	0.00	40.51	11.01	40.51	0.08
61		26.28	0.00	46.24	12.98	46.24	0.09
62		26.41	0.00	80.13	18.76	80.13	0.15
63	germacrene D	26.60	100.00	788.40	140.87	788.40	1.48
64		26.76	0.00	55.56	15.56	55.56	0.10
65		26.89	0.00	8.71	2.42	8.71	0.02
66		27.00	0.00	14.22	3.46	14.22	0.03
67		27.25	0.00	8.54	2.47	8.54	0.02
68	delta cadinene	27.64	100.00	548.53	117.88	548.53	1.03
69		27.92	0.00	67.47	19.66	67.47	0.13
70		28.27	0.00	3.73	1.10	3.73	0.01
71		28.88	0.00	17.40	4.72	17.40	0.03
72		29.01	0.00	7.63	2.16	7.63	0.01
73		29.14	0.00	24.20	4.16	24.20	0.05
74		29.52	0.00	18.00	4.84	18.00	0.03
75	globulol	29.75	100.00	75.28	17.30	75.28	0.14
76		30.02	0.00	40.82	11.19	40.82	0.08
77		30.11	0.00	27.36	7.50	27.36	0.05
78		30.40	0.00	25.82	6.18	25.82	0.05
79		31.13	0.00	27.72	7.60	27.72	0.05
80		31.32	0.00	38.41	10.62	38.41	0.07
81		31.67	0.00	28.49	7.63	28.49	0.05
82		31.82	0.00	25.01	6.26	25.01	0.05
83		31.96	0.00	6.16	1.83	6.16	0.01





40

50

60

70

min