

Turmeric Organic

HP-5 5% Phenyl Methyl Siloxane

4951-BBAB

30.000m

India

250.000um

Curcuma Longa

0.250um

Sample Ratio: 0.05g/0.50g

Injection Amount: 0.2uL

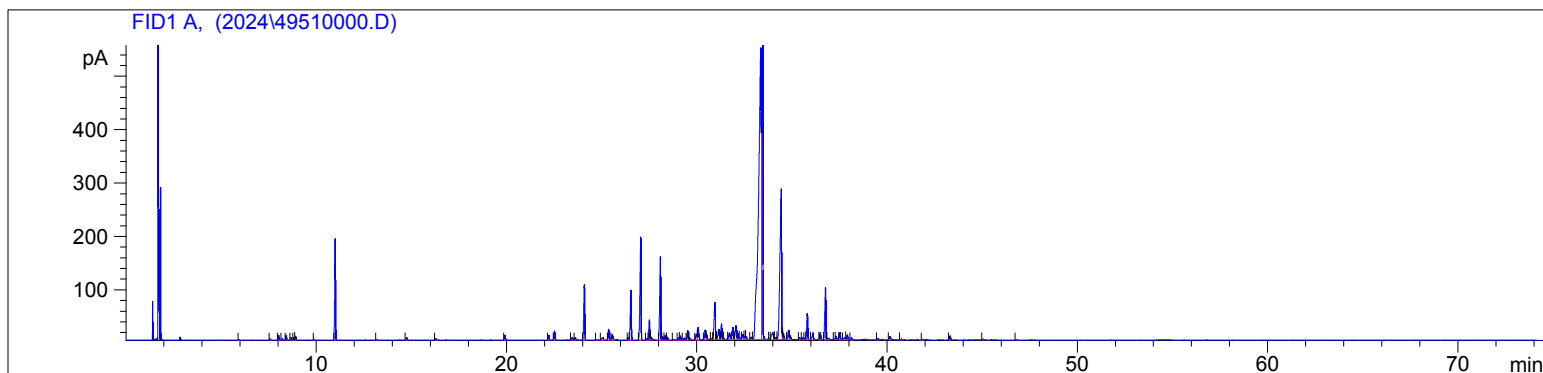
20:1 Split Ratio

3/3/2025 2:21:20 PM

3/3/2025

3/3/2025 2:21:20 PM

4:20:42 PM



#	Compound Name	Meas. Ret.	Amount	Response	Height	Area	Area %
1		5.94	0.00	3.22	1.47	3.22	0.02
2	Myrcene	7.57	0.00	7.02	2.85	7.02	0.05
3	alpha phellandrene	8.01	0.00	23.71	9.19	23.71	0.15
4	delta-3-carene	8.21	0.00	7.89	3.01	7.89	0.05
5	alpha terpinene	8.42	0.00	24.02	9.15	24.02	0.16
6	para cymene	8.67	0.00	12.45	4.69	12.45	0.08
7	d-limonene	8.83	0.00	12.99	4.70	12.99	0.08
8	1.8 Cineol	8.91	0.00	20.54	7.29	20.54	0.13
9	gamma terpinene	9.89	0.00	3.21	1.18	3.21	0.02
10	terpinolene	11.01	0.00	572.45	189.10	572.45	3.71
11		13.17	0.00	3.10	0.94	3.10	0.02
12	alpha terpineol	14.76	0.00	17.97	4.70	17.97	0.12
13		16.29	0.00	11.27	2.44	11.27	0.07
14		19.92	0.00	32.06	8.94	32.06	0.21
15		22.23	0.00	30.98	9.21	30.98	0.20
16		22.53	0.00	57.89	16.68	57.89	0.38
17		23.47	0.00	22.04	4.64	22.04	0.14
18	beta caryophyllene	23.62	0.00	14.98	4.73	14.98	0.10
19	alpha santralene	24.10	0.00	381.57	103.50	381.57	2.47
20		24.74	0.00	4.06	1.32	4.06	0.03
21		25.07	0.00	26.65	4.62	26.65	0.17
22	epi-beta-santralene	25.37	0.00	70.30	20.29	70.30	0.46
23	alpha humulene	25.57	0.00	48.31	10.44	48.31	0.31
24	gamma curcumene	26.41	0.00	15.10	4.36	15.10	0.10
25	ar-curcumene	26.55	0.00	335.43	93.00	335.43	2.18
26	alpha zingibrene	27.06	0.00	764.59	192.27	764.59	4.96
27		27.37	0.00	8.19	2.48	8.19	0.05
28	cis alpha bisabolene	27.52	0.00	124.67	37.12	124.67	0.81
29	beta bisabolene	27.62	0.00	18.63	4.66	18.63	0.12
30	beta sesquiphellandrene	28.10	0.00	584.00	156.22	584.00	3.79
31		28.21	0.00	21.41	5.95	21.41	0.14
32	trans gamma bisabolene	28.35	0.00	28.16	8.14	28.16	0.18
33		28.46	0.00	18.47	5.03	18.47	0.12
34		28.78	0.00	5.22	1.30	5.22	0.03
35		29.05	0.00	12.87	3.77	12.87	0.08
36	germacrene d	29.14	0.00	26.47	7.49	26.47	0.17
37		29.35	0.00	16.64	3.52	16.64	0.11
38		29.53	0.00	64.52	17.80	64.52	0.42
39		29.63	0.00	12.21	3.57	12.21	0.08
40		29.99	0.00	45.66	11.18	45.66	0.30

4951-BBAB

Instrument 6890

C:\HPCHEM\2\DATA\2024\
49510000.D

Turmeric Organic

HP-5 5% Phenyl Methyl Siloxane

4951-BBAB

30.000m

India

250.000um

Curcuma Longa

0.250um

Sample Ratio: 0.05g/0.50g

Injection Amount: 0.2uL

20:1 Split Ratio

3/3/2025 2:21:20 PM

3/3/2025

3/3/2025 2:21:20 PM

4:20:42 PM

#	Compound Name	Meas. Ret.	Amount	Response	Height	Area	Area %
41	spathulenol	30.08	0.00	104.06	23.10	104.06	0.67
42		30.45	0.00	67.48	17.80	67.48	0.44
43		30.54	0.00	28.87	8.53	28.87	0.19
44		30.77	0.00	3.99	1.31	3.99	0.03
45	dihydro-ar-turmerone	30.96	0.00	326.15	69.91	326.15	2.12
46		31.16	0.00	95.14	18.99	95.14	0.62
47		31.30	0.00	105.78	28.80	105.78	0.69
48		31.44	0.00	0.72	0.99	0.72	0.00
49		31.72	0.00	62.28	11.58	62.28	0.40
50		31.91	0.00	92.98	22.88	92.98	0.60
51		32.07	0.00	124.56	25.45	124.56	0.81
52		32.18	0.00	39.08	10.98	39.08	0.25
53		32.26	0.00	14.19	3.27	14.19	0.09
54		32.43	0.00	43.26	9.89	43.26	0.28
55		32.52	0.00	21.04	4.99	21.04	0.14
56		32.60	0.00	24.52	5.25	24.52	0.16
57		32.87	0.00	21.28	4.28	21.28	0.14
58	ar-turmerone	33.37	0.00	5263.72	540.76	5263.72	34.14
59	turmerone	33.47	0.00	2574.99	558.13	2574.99	16.70
60		33.84	0.00	4.35	1.67	4.35	0.03
61		34.01	0.00	88.21	12.33	88.21	0.57
62		34.15	0.00	21.65	3.68	21.65	0.14
63	curlone	34.45	0.00	1683.65	280.23	1683.65	10.92
64		34.56	0.00	35.02	11.90	35.02	0.23
65		34.83	0.00	66.11	17.27	66.11	0.43
66		34.91	0.00	28.53	7.37	28.53	0.19
67		35.41	0.00	14.56	3.50	14.56	0.09
68		35.56	0.00	12.21	3.27	12.21	0.08
69		35.70	0.00	9.75	2.99	9.75	0.06
70		35.82	0.00	186.77	48.65	186.77	1.21
71		36.11	0.00	60.62	12.70	60.62	0.39
72		36.50	0.00	51.22	13.26	51.22	0.33
73	trans-alpha-atlantone	36.77	0.00	377.22	97.43	377.22	2.45
74		36.88	0.00	17.15	2.81	17.15	0.11
75		37.24	0.00	4.91	1.42	4.91	0.03
76		37.33	0.00	21.67	6.01	21.67	0.14
77		37.53	0.00	52.04	13.36	52.04	0.34
78		37.78	0.00	20.61	3.84	20.61	0.13
79		37.90	0.00	35.47	8.47	35.47	0.23
80		38.12	0.00	14.85	3.94	14.85	0.10
81		39.51	0.00	7.53	2.02	7.53	0.05
82		40.14	0.00	28.27	5.70	28.27	0.18
83		40.74	0.00	8.12	1.94	8.12	0.05
84		41.87	0.00	4.16	1.16	4.16	0.03
85		43.30	0.00	27.44	7.24	27.44	0.18
86		45.05	0.00	6.17	1.48	6.17	0.04
87		46.79	0.00	4.64	1.24	4.64	0.03

