

5101

Instrument 6890

C:\HPCHEM\2\DATA\2023\  
51010000.D

Vetiver Organic

HP-5 5% Phenyl Methyl Siloxane

5101-BACN

30.000m

Haiti

250.000um

Vetiveria zizanioides

0.250um

Sample/Solvent: 0.09g/0.49g

Injection Amount: 0.2uL

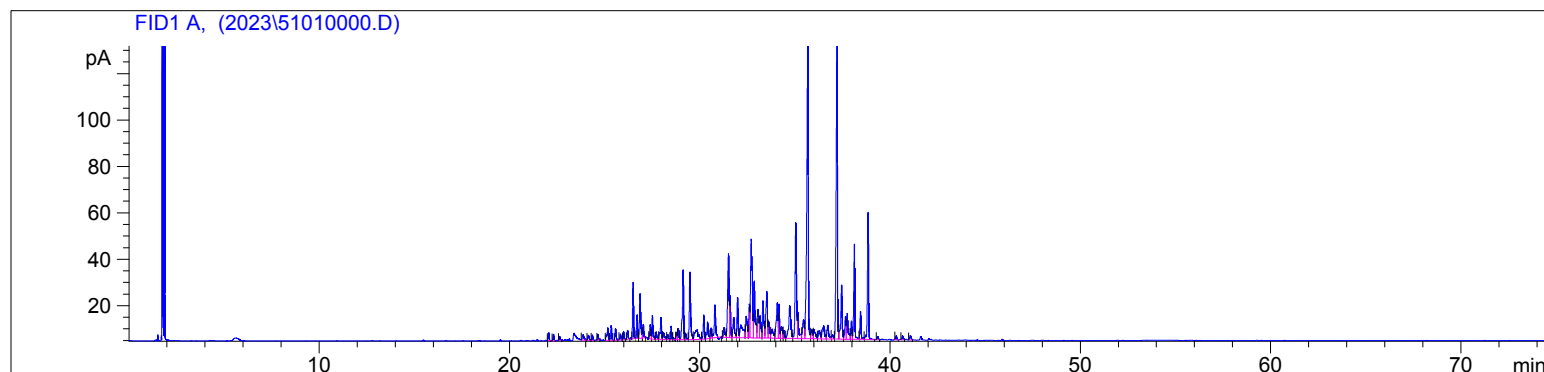
15:1 Split Ratio

2/14/2023 2:00:32 PM

2/14/2023

2/14/2023 2:00:32 PM

3:26:43 PM



#	Compound Name	Meas. Ret.	Amount	Response	Height	Area	Area %
1		22.07	0.00	11.89	3.38	11.89	0.22
2		22.32	0.00	9.35	2.79	9.35	0.18
3		22.65	0.00	5.74	1.76	5.74	0.11
4		23.88	0.00	13.36	2.22	13.36	0.25
5		24.15	0.00	10.56	2.12	10.56	0.20
6		24.37	0.00	8.43	2.25	8.43	0.16
7		24.66	0.00	7.27	2.34	7.27	0.14
8		25.17	0.00	26.94	5.36	26.94	0.51
9		25.36	0.00	24.02	6.33	24.02	0.45
10		25.58	0.00	19.66	5.08	19.66	0.37
11		25.84	0.00	9.32	2.48	9.32	0.18
12		26.00	0.00	11.39	3.60	11.39	0.21
13		26.22	0.00	13.23	3.75	13.23	0.25
14	zizanene	26.51	0.00	83.57	24.23	83.57	1.58
15		26.71	0.00	37.66	10.05	37.66	0.71
16	beta vetispiorene	26.87	0.00	87.59	19.14	87.59	1.65
17		27.04	0.00	22.31	5.95	22.31	0.42
18	beta curcumene	27.41	0.00	24.15	6.20	24.15	0.46
19	gamma cadinene	27.52	0.00	39.87	10.02	39.87	0.75
20		27.72	0.00	13.44	3.18	13.44	0.25
21	delta cadinene	27.97	0.00	43.14	9.37	43.14	0.81
22		28.11	0.00	16.78	2.85	16.78	0.32
23		28.32	0.00	8.06	2.11	8.06	0.15
24	eromophilene	28.50	0.00	20.50	5.74	20.50	0.39
25		28.62	0.00	2.78	0.89	2.78	0.05
26		28.80	0.00	11.70	3.21	11.70	0.22
27		28.89	0.00	18.57	4.85	18.57	0.35
28	beta vetivenene	29.14	0.00	137.17	29.99	137.17	2.59
29	beta elemol	29.27	0.00	10.74	2.49	10.74	0.20
30	khusimone	29.49	0.00	135.18	29.02	135.18	2.55
31		29.87	0.00	52.93	4.18	52.93	1.00
32		30.22	0.00	39.59	10.41	39.59	0.75
33	10-epi-gamma eudesmol	30.42	0.00	33.96	7.13	33.96	0.64
34		30.60	0.00	17.19	4.34	17.19	0.32
35	1-epi-cubenol	30.80	0.00	64.19	13.99	64.19	1.21

5101

Instrument 6890

C:\HPCHEM\2\DATA\2023\  
51010000.D

Vetiver Organic

HP-5 5% Phenyl Methyl Siloxane

5101-BACN

30.000m

Haiti

250.000um

Vetiveria zizanoides

0.250um

Sample/Solvent: 0.09g/0.49g

Injection Amount: 0.2uL

15:1 Split Ratio

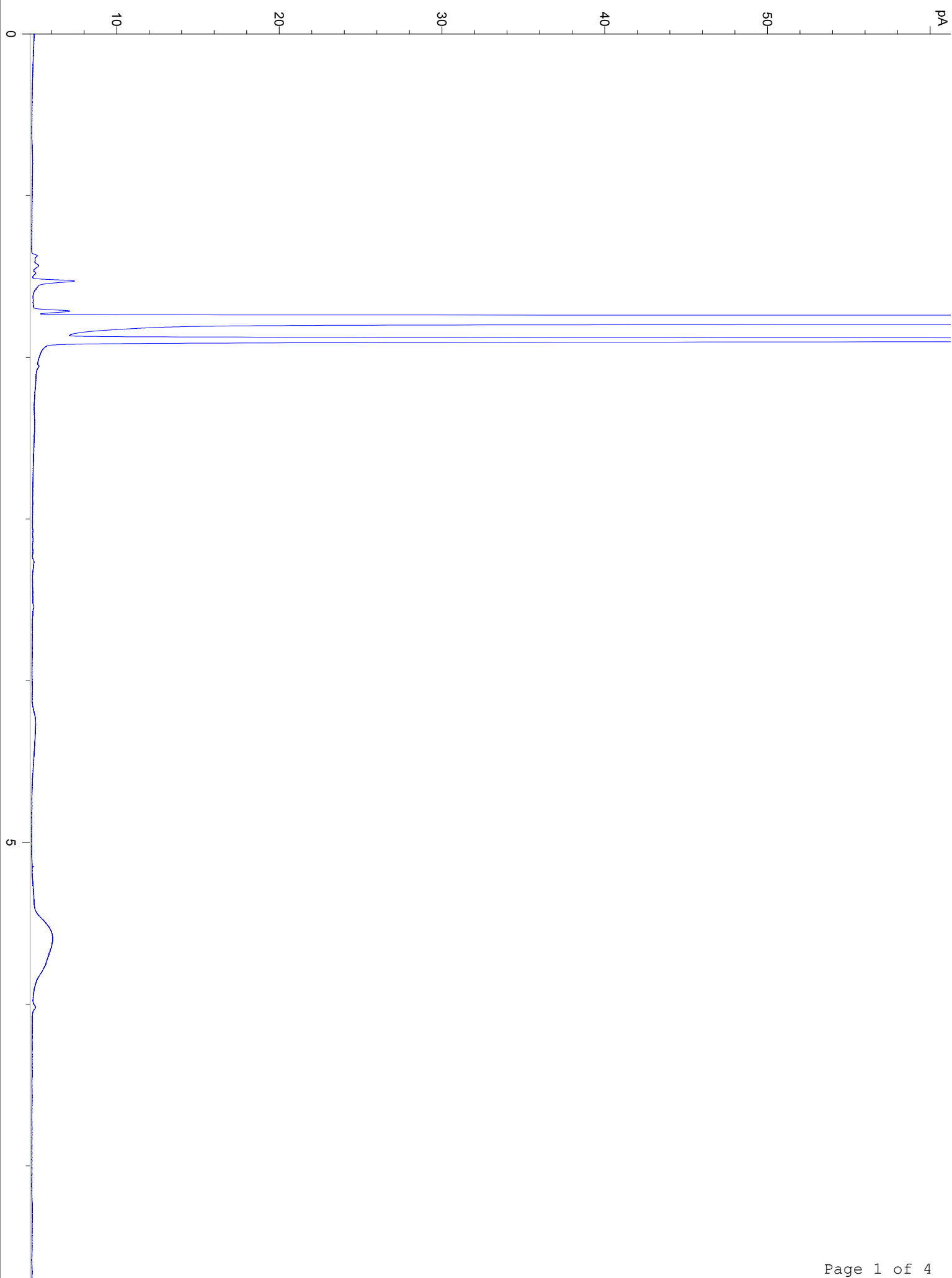
2/14/2023 2:00:32 PM

2/14/2023

2/14/2023 2:00:32 PM

3:26:43 PM

#	Compound Name	Meas. Ret.	Amount	Response	Height	Area	Area %
36		31.29	0.00	21.13	4.31	21.13	0.40
37	beta eudesmol	31.52	0.00	187.72	36.01	187.72	3.54
38	alpha eudesmol	31.60	0.00	64.38	18.03	64.38	1.21
39	valerianol	31.79	0.00	48.42	8.70	48.42	0.91
40	dihydro-eudesmol	31.99	0.00	69.32	17.15	69.32	1.31
41		32.17	0.00	66.50	5.49	66.50	1.25
42		32.45	0.00	58.98	9.30	58.98	1.11
43	cyclocopacamphenol isomer	32.61	0.00	52.34	14.52	52.34	0.99
44	cyclocopacamphenol isomer	32.71	0.00	279.47	42.42	279.47	5.27
45		32.87	0.00	123.46	24.51	123.46	2.33
46		33.06	0.00	72.44	12.31	72.44	1.37
47		33.18	0.00	48.33	9.64	48.33	0.91
48	beta bisabolol	33.33	0.00	82.53	15.96	82.53	1.56
49	khusinol	33.53	0.00	116.08	20.12	116.08	2.19
50		33.63	0.00	34.82	7.08	34.82	0.66
51	beta bisabolol	33.82	0.00	29.61	3.88	29.61	0.56
52	zizanal	34.08	0.00	90.43	15.22	90.43	1.70
53		34.17	0.00	55.71	14.61	55.71	1.05
54		34.30	0.00	31.57	4.92	31.57	0.59
55		34.42	0.00	15.47	3.42	15.47	0.29
56	ziza-6(13)-en-3-beta-ol	34.73	0.00	103.94	14.01	103.94	1.96
57	vetiselinenol	35.05	0.00	251.22	49.77	251.22	4.73
58		35.17	0.00	53.29	11.33	53.29	1.00
59		35.47	0.00	53.22	8.08	53.22	1.00
60	khusimol	35.68	0.00	727.47	140.21	727.47	13.71
61		35.90	0.00	20.43	3.88	20.43	0.39
62		36.01	0.00	28.52	4.07	28.52	0.54
63		36.28	0.00	23.22	3.51	23.22	0.44
64		36.52	0.00	44.39	5.58	44.39	0.84
65		36.74	0.00	37.60	5.95	37.60	0.71
66		36.98	0.00	10.05	1.89	10.05	0.19
67	trans-isovalencenol	37.22	0.00	584.49	131.86	584.49	11.02
68	trans-spirovetiva-3,7 (11)-	37.46	0.00	120.01	23.16	120.01	2.26
69		37.65	0.00	41.15	9.72	41.15	0.78
70		37.74	0.00	60.41	11.02	60.41	1.14
71		37.96	0.00	32.67	7.84	32.67	0.62
72	beta vetivone	38.12	0.00	164.23	40.89	164.23	3.10
73	trans-isovalencenal	38.44	0.00	51.38	12.03	51.38	0.97
74	alpha vetivone	38.84	0.00	227.27	54.48	227.27	4.28
75		39.34	0.00	6.12	1.41	6.12	0.12
76		40.32	0.00	6.89	1.66	6.89	0.13
77		40.64	0.00	7.18	1.72	7.18	0.14
78		41.06	0.00	9.52	1.93	9.52	0.18



10

15

20

22.068

22.322

22.646

23.876

