

5101

Instrument 6890

C:\HPCHEM\2\DATA\2024\51010000.D

Vetiver ORG

HP-5 5% Phenyl Methyl Siloxane

5101-BBGA

30.000m

Madagascar

250.000um

Vetiveria zizanioides

0.250um

Sample/Solvent/EtOH: 0.10g/0.51g/

0.04g

Injection Amount: 0.2uL

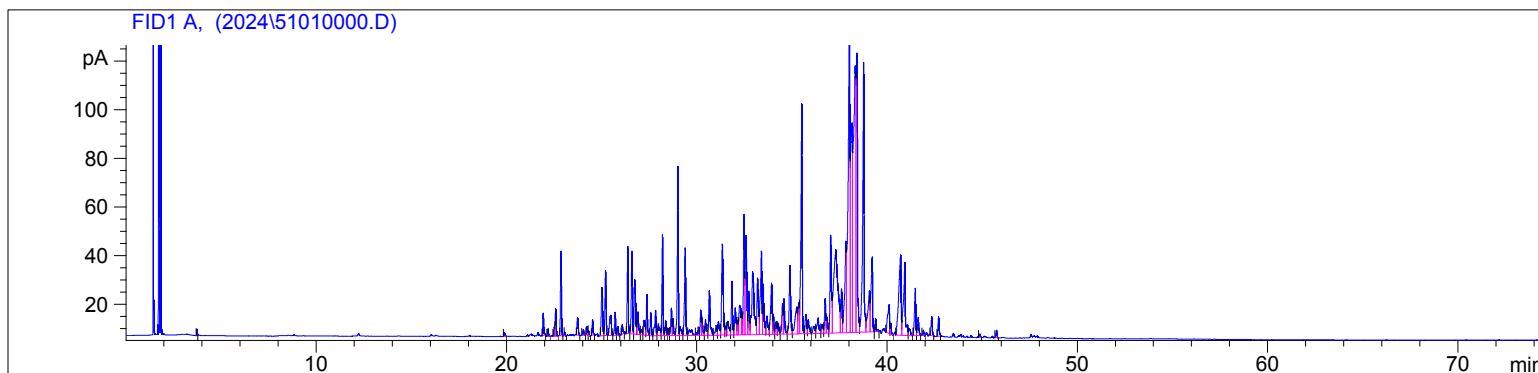
15:1 Split Ratio

2/28/2024 9:43:35 AM

2/28/2024

2/28/2024 9:43:35 AM

11:32:25 AM



#	Compound Name	Meas. Ret.	Amount	Response	Height	Area	Area %
1		3.72	0.00	4.95	2.49	4.95	0.04
2		19.90	0.00	5.55	1.51	5.55	0.05
3		21.94	0.00	31.54	9.03	31.54	0.28
4		22.19	0.00	10.98	2.99	10.98	0.10
5		22.52	0.00	11.65	3.80	11.65	0.10
6		22.59	0.00	44.36	11.20	44.36	0.39
7		22.87	0.00	123.28	34.79	123.28	1.10
8		23.07	0.00	5.05	1.55	5.05	0.04
9		23.74	0.00	32.39	7.13	32.39	0.29
10		24.05	0.00	9.23	2.16	9.23	0.08
11		24.24	0.00	13.10	3.59	13.10	0.12
12		24.33	0.00	6.81	1.91	6.81	0.06
13		24.53	0.00	20.54	6.24	20.54	0.18
14		25.03	0.00	100.36	20.03	100.36	0.89
15		25.21	0.00	113.93	26.74	113.93	1.01
16		25.49	0.00	54.67	8.33	54.67	0.49
17		25.72	0.00	37.87	9.55	37.87	0.34
18		25.87	0.00	13.19	3.75	13.19	0.12
19		26.09	0.00	15.37	3.88	15.37	0.14
20	zizanene	26.38	0.00	126.79	35.85	126.79	1.13
21		26.60	0.00	143.52	34.00	143.52	1.28
22	beta vetispiorene	26.75	0.00	119.15	22.43	119.15	1.06
23		26.92	0.00	45.28	9.24	45.28	0.40
24		27.11	0.00	11.13	2.07	11.13	0.10
25		27.23	0.00	39.47	6.08	39.47	0.35
26	beta curcumene	27.39	0.00	67.23	16.76	67.23	0.60
27	gamma cadinene	27.59	0.00	34.76	9.29	34.76	0.31
28		27.84	0.00	49.09	10.42	49.09	0.44
29		27.99	0.00	36.31	4.86	36.31	0.32
30	delta cadinene	28.21	0.00	148.17	41.52	148.17	1.32
31		28.37	0.00	23.81	6.16	23.81	0.21
32		28.50	0.00	10.79	2.85	10.79	0.10
33	eromophilene	28.67	0.00	44.98	11.32	44.98	0.40
34		28.76	0.00	27.61	7.08	27.61	0.25
35	beta vetivenene	29.02	0.00	263.88	69.57	263.88	2.35
36	beta elemol	29.13	0.00	22.06	3.79	22.06	0.20
37	khusimone	29.40	0.00	161.09	36.00	161.09	1.43
38		29.73	0.00	29.66	2.42	29.66	0.26
39		30.09	0.00	16.66	3.39	16.66	0.15
40		30.22	0.00	38.21	10.33	38.21	0.34

5101

Instrument 6890

C:\HPCHEM\2\DATA\2024\
51010000.D

Vetiver ORG

HP-5 5% Phenyl Methyl Siloxane

5101-BBGA

30.000m

Madagascar

250.000um

Vetiveria zizanioides

0.250um

Sample/Solvent/EtOH: 0.10g/0.51g/
0.04g

0.04g

Injection Amount: 0.2uL

15:1 Split Ratio

2/28/2024 9:43:35 AM

2/28/2024

2/28/2024 9:43:35 AM

11:32:25 AM

#	Compound Name	Meas. Ret.	Amount	Response	Height	Area	Area %
41		30.29	0.00	28.29	7.25	28.29	0.25
42	10-epi gamma eudesmol	30.46	0.00	31.92	6.39	31.92	0.28
43	1-epi-cubenol	30.67	0.00	99.68	18.40	99.68	0.89
44		31.03	0.00	22.66	4.03	22.66	0.20
45		31.14	0.00	32.87	5.41	32.87	0.29
46	beta eudesmol	31.35	0.00	213.59	37.45	213.59	1.90
47	alpha eudesmol	31.53	0.00	15.75	3.64	15.75	0.14
48		31.64	0.00	43.01	5.61	43.01	0.38
49	dihydro-eudesmol	31.86	0.00	89.69	22.02	89.69	0.80
50		32.03	0.00	60.08	10.97	60.08	0.53
51		32.15	0.00	27.26	5.93	27.26	0.24
52		32.26	0.00	89.51	12.11	89.51	0.80
53		32.38	0.00	28.80	8.25	28.80	0.26
54	cyclocopacamphenol isomer	32.49	0.00	207.29	49.49	207.29	1.84
55	cyclocopacamphneol isomer	32.58	0.00	237.35	40.85	237.35	2.11
56		32.74	0.00	72.72	17.92	72.72	0.65
57		32.95	0.00	235.24	25.86	235.24	2.09
58	beta bisabolol	33.20	0.00	121.03	23.19	121.03	1.08
59	khusinol	33.40	0.00	196.36	34.14	196.36	1.75
60		33.50	0.00	94.29	20.64	94.29	0.84
61	alpha bisabolol	33.69	0.00	48.59	7.56	48.59	0.43
62		33.94	0.00	120.04	21.00	120.04	1.07
63	zizanal	34.03	0.00	30.05	8.26	30.05	0.27
64		34.18	0.00	27.19	5.11	27.19	0.24
65		34.29	0.00	21.96	4.50	21.96	0.20
66		34.51	0.00	53.02	12.46	53.02	0.47
67	ziza-6(13)-en-3-beta-ol	34.59	0.00	64.92	14.56	64.92	0.58
68	vetiselineol	34.90	0.00	148.64	28.08	148.64	1.32
69		35.26	0.00	96.82	10.94	96.82	0.86
70		35.38	0.00	62.93	12.83	62.93	0.56
71	khusimol	35.53	0.00	453.52	94.53	453.52	4.03
72		35.74	0.00	42.15	7.90	42.15	0.37
73		35.87	0.00	32.51	5.73	32.51	0.29
74		36.14	0.00	22.23	2.98	22.23	0.20
75		36.38	0.00	45.97	6.27	45.97	0.41
76		36.59	0.00	23.80	3.59	23.80	0.21
77		36.75	0.00	60.22	14.19	60.22	0.54
78		36.84	0.00	31.97	6.65	31.97	0.28
79		37.05	0.00	200.40	40.07	200.40	1.78
80		37.31	0.00	547.27	34.24	547.27	4.87
81		37.60	0.00	81.01	18.02	81.01	0.72
82		37.83	0.00	241.86	37.59	241.86	2.15
83	trans-isovalencenol	38.01	0.00	835.94	126.57	835.94	7.43
84	trans-spirovetiva-3,7 (11)-	38.15	0.00	622.64	86.17	622.64	5.54
85		38.32	0.00	1019.30	109.50	1019.30	9.06
86	beta vetivone	38.42	0.00	505.61	114.78	505.61	4.50
87	alpha vetivone	38.77	0.00	591.67	109.56	591.67	5.26
88		39.06	0.00	130.43	16.85	130.43	1.16
89		39.21	0.00	172.01	30.81	172.01	1.53
90		39.39	0.00	20.87	5.40	20.87	0.19
91		40.10	0.00	79.16	11.81	79.16	0.70
92		40.19	0.00	16.52	4.42	16.52	0.15
93		40.71	0.00	282.25	32.85	282.25	2.51
94		40.93	0.00	214.52	30.07	214.52	1.91
95		41.14	0.00	19.10	2.89	19.10	0.17

5101

Instrument 6890

C:\HPCHEM\2\DATA\2024\
51010000.D

Vetiver ORG

HP-5 5% Phenyl Methyl Siloxane

5101-BBGA

30.000m

Madagascar

250.000um

Vetiveria zizanioides

0.250um

Sample/Solvent/EtOH: 0.10g/0.51g/
0.04g

Injection Amount: 0.2uL

15:1 Split Ratio

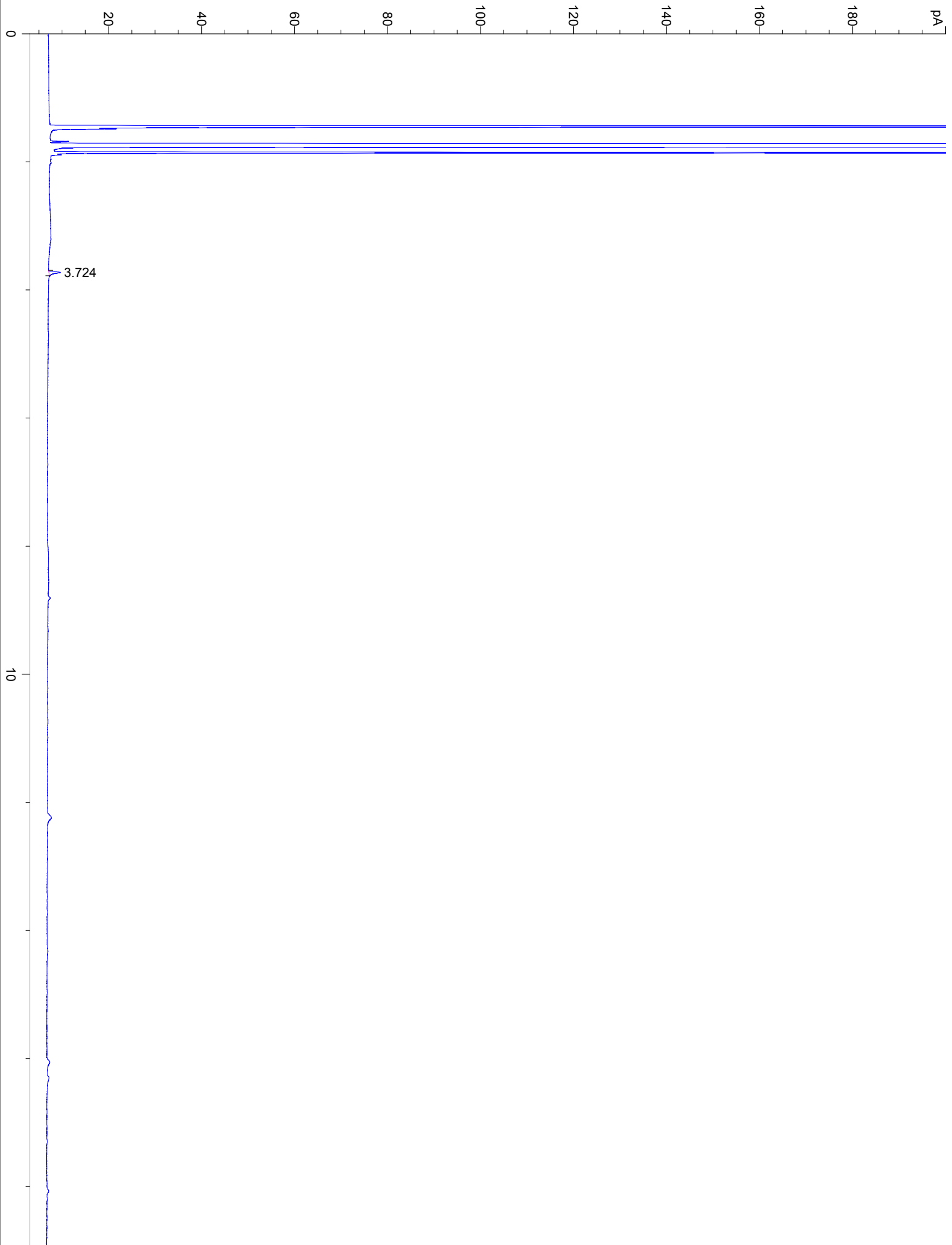
2/28/2024 9:43:35 AM

2/28/2024

2/28/2024 9:43:35 AM

11:32:25 AM

#	Compound Name	Meas. Ret.	Amount	Response	Height	Area	Area %
96		41.47	0.00	92.85	19.28	92.85	0.83
97		41.63	0.00	35.76	7.46	35.76	0.32
98		41.90	0.00	6.00	2.07	6.00	0.05
99		42.34	0.00	33.44	7.77	33.44	0.30
100		42.70	0.00	32.87	8.00	32.87	0.29
101		44.87	0.00	5.13	1.39	5.13	0.05
102		45.74	0.00	11.13	3.08	11.13	0.10



20

30



