

5101-IIBEZ

Instrument 6890

C:\HPCHEM\2\DATA\2019\  
51010001.D

Vetiver Organic

HP-5 5% Phenyl Methyl Siloxane

5101-IIBEZ

30.000m

Haiti

250.000um

Vetiveria zizanoides

0.250um

Sample/Solvent: 0.06/0.60g

Injection Amount: 0.2uL

15:1 Split Ratio

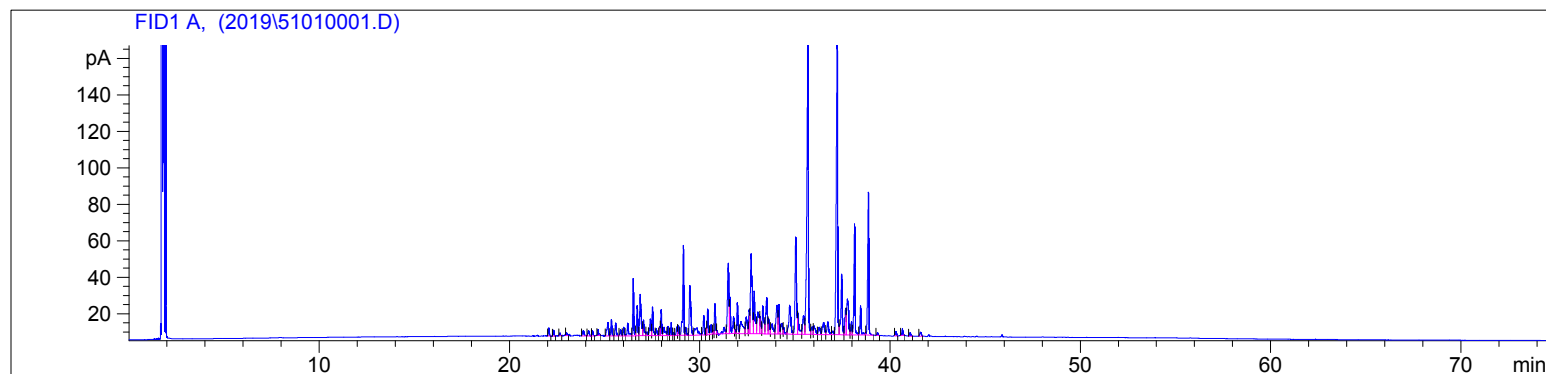
-&gt;

9/27/2019 3:23:50 PM

10/3/2019

9/27/2019 3:23:50 PM

10:29:14 AM



#	Compound Name	Meas. Ret.	Amount	Response	Height	Area	Area %
1		22.08	100.00	14.88	4.34	14.88	0.22
2		22.33	100.00	11.01	3.17	11.01	0.16
3		22.65	100.00	5.20	1.60	5.20	0.08
4		23.01	100.00	6.11	1.56	6.11	0.09
5		23.88	100.00	16.31	2.87	16.31	0.24
6		24.16	100.00	13.41	2.78	13.41	0.20
7		24.37	100.00	10.43	2.71	10.43	0.16
8		24.67	100.00	11.11	3.19	11.11	0.17
9		25.18	100.00	41.22	7.38	41.22	0.62
10		25.36	100.00	34.78	8.87	34.78	0.52
11		25.59	100.00	30.68	7.07	30.68	0.46
12		25.84	100.00	15.70	3.40	15.70	0.23
13		26.01	100.00	17.38	4.62	17.38	0.26
14		26.22	100.00	37.73	6.88	37.73	0.56
15	zizanene	26.51	100.00	114.17	31.18	114.17	1.71
16		26.72	100.00	69.72	16.55	69.72	1.04
17	beta vetispiorene	26.88	100.00	121.98	22.55	121.98	1.82
18		27.05	100.00	43.09	8.63	43.09	0.64
19		27.23	100.00	11.53	1.98	11.53	0.17
20	beta curcumene	27.41	100.00	41.58	9.14	41.58	0.62
21	gamma cadinene	27.52	100.00	64.74	15.63	64.74	0.97
22		27.72	100.00	18.36	3.85	18.36	0.27
23		27.91	100.00	15.00	4.83	15.00	0.22
24	delta cadinene	27.98	100.00	52.58	14.10	52.58	0.79
25		28.12	100.00	29.88	4.56	29.88	0.45
26		28.33	100.00	18.40	4.94	18.40	0.28
27	eromophilene	28.51	100.00	27.29	7.07	27.29	0.41
28		28.63	100.00	5.04	1.45	5.04	0.08
29		28.80	100.00	17.79	4.58	17.79	0.27
30		28.89	100.00	21.26	5.56	21.26	0.32
31	beta vetivenene	29.15	100.00	203.00	49.31	203.00	3.04
32	beta elemol	29.27	100.00	18.03	4.24	18.03	0.27

5101-IIBEZ

Instrument 6890

C:\HPCHEM\2\DATA\2019\  
51010001.D

Vetiver Organic

HP-5 5% Phenyl Methyl Siloxane

5101-IIBEZ

30.000m

Haiti

250.000um

Vetiveria zizanioides

0.250um

Sample/Solvent: 0.06/0.60g

Injection Amount: 0.2uL

15:1 Split Ratio

-&gt;

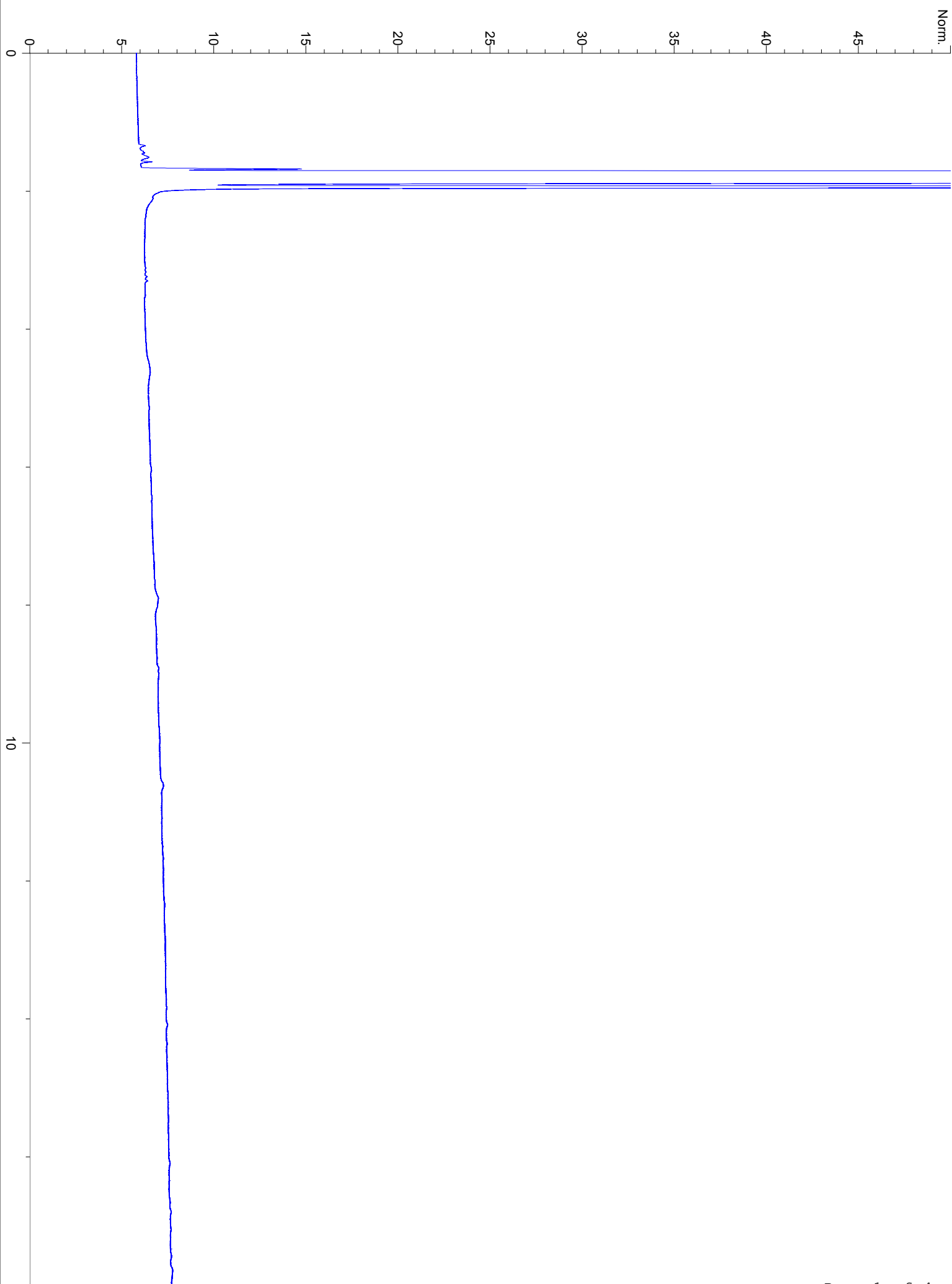
9/27/2019 3:23:50 PM

10/3/2019

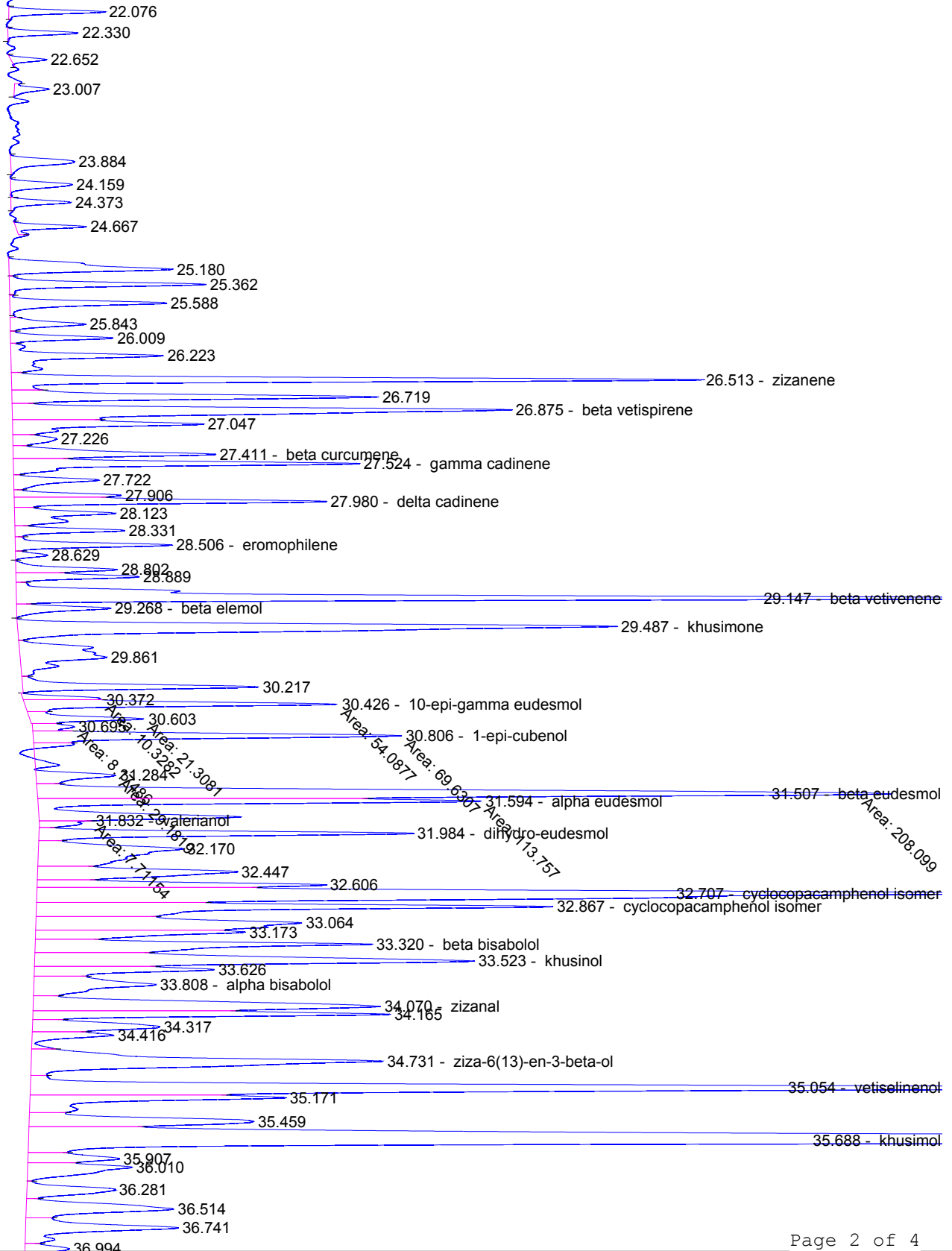
9/27/2019 3:23:50 PM

10:29:14 AM

#	Compound Name	Meas. Ret.	Amount	Response	Height	Area	Area %
33	khusimone	29.49	100.00	151.92	27.07	151.92	2.27
34		29.86	100.00	50.64	3.90	50.64	0.76
35		30.22	100.00	42.53	10.65	42.53	0.64
36	10-epi-gamma eudesmol	30.43	85.65	54.09	14.14	54.09	0.81
37		30.60	109.28	21.31	5.17	21.31	0.32
38	1-epi-cubenol	30.81	99.44	69.63	16.65	69.63	1.04
39		31.28	171.77	29.18	3.60	29.18	0.44
40	beta eudesmol	31.51	100.86	208.10	38.52	208.10	3.11
41	alpha eudesmol	31.59	157.97	113.76	20.02	113.76	1.70
42	valerianol	31.83	15.74	7.71	2.36	7.71	0.12
43	dihydro-eudesmol	31.98	100.00	67.73	16.91	67.73	1.01
44		32.17	100.00	72.75	6.52	72.75	1.09
45		32.45	100.00	56.82	9.01	56.82	0.85
46		32.61	100.00	48.73	13.03	48.73	0.73
47	cyclocopacamphenol isomer	32.71	100.00	278.72	43.70	278.72	4.17
48	cyclocopacamphenol isomer	32.87	100.00	118.05	23.31	118.05	1.77
49		33.06	100.00	90.21	12.00	90.21	1.35
50		33.17	100.00	43.01	9.47	43.01	0.64
51	beta bisabolol	33.32	100.00	81.43	15.21	81.43	1.22
52	khusinol	33.52	100.00	118.67	19.86	118.67	1.77
53		33.63	100.00	37.10	8.12	37.10	0.55
54	alpha bisabolol	33.81	100.00	44.96	5.51	44.96	0.67
55	zizanal	34.07	100.00	98.78	15.67	98.78	1.48
56		34.16	100.00	61.69	16.14	61.69	0.92
57		34.32	100.00	34.73	5.74	34.73	0.52
58		34.42	100.00	18.40	3.68	18.40	0.28
59	ziza-6(13)-en-3-beta-ol	34.73	100.00	114.21	15.89	114.21	1.71
60	vetiselinol	35.05	100.00	273.13	52.82	273.13	4.09
61		35.17	100.00	60.42	11.54	60.42	0.90
62		35.46	100.00	65.44	10.14	65.44	0.98
63	khusimol	35.69	100.00	876.13	165.21	876.13	13.10
64		35.91	100.00	22.55	4.12	22.55	0.34
65		36.01	100.00	34.60	4.70	34.60	0.52
66		36.28	100.00	26.16	3.97	26.16	0.39
67		36.51	100.00	48.40	6.65	48.40	0.72
68		36.74	100.00	47.89	6.89	47.89	0.72
69		36.99	100.00	10.71	2.00	10.71	0.16
70	trans-isovalencenol	37.23	100.00	802.26	167.09	802.26	12.00
71	trans-spirovetiva-3,7 (11)-	37.47	100.00	173.92	33.03	173.92	2.60
72		37.66	100.00	61.97	14.39	61.97	0.93
73		37.75	100.00	137.77	19.60	137.77	2.06
74		37.96	100.00	30.37	7.17	30.37	0.45
75	beta vetivone	38.13	100.00	249.47	60.76	249.47	3.73
76	trans-isovalencenal	38.44	100.00	70.60	15.90	70.60	1.06
77	alpha vetivone	38.85	100.00	329.90	78.27	329.90	4.93
78		39.33	100.00	7.21	1.58	7.21	0.11
79		40.31	100.00	9.94	2.44	9.94	0.15
80		40.64	100.00	13.83	3.56	13.83	0.21
81		41.05	100.00	8.45	1.85	8.45	0.13
82		41.59	100.00	11.86	2.20	11.86	0.18



20



30

40

50

