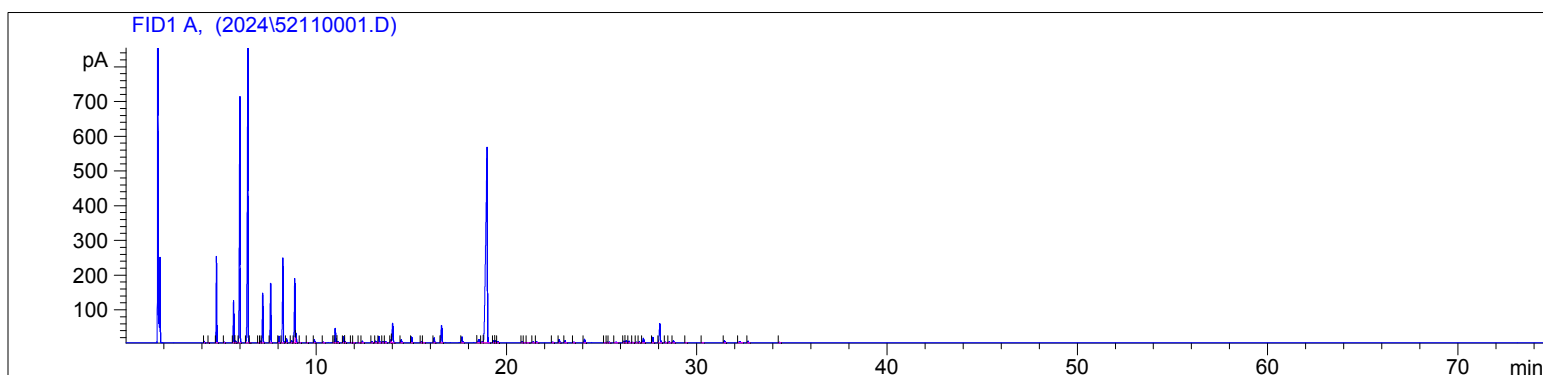


Black Spruce Org
5211-HBIA
Canada
Picea Mariana
Sample/Solvent: 0.05g/0.5g
Injection Amount: 0.2uL
20:1 Split Ratio

HP-5 5% Phenyl Methyl Siloxane
30.000m
250.000um
0.250um

8/30/2024 1:03:31 PM
8/30/2024 1:03:31 PM

8/30/2024
2:40:18 PM



#	Compound Name	Meas. Ret.	Amount	Response	Height	Area	Area %
1		4.11	0.00	8.75	4.51	8.75	0.07
2		4.34	0.00	3.01	1.50	3.01	0.02
3	Santene	4.75	0.00	500.80	248.68	500.80	3.98
4		5.16	0.00	4.37	1.86	4.37	0.03
5	Tricyclene	5.65	0.00	283.25	121.47	283.25	2.25
6		5.76	0.00	13.36	5.69	13.36	0.11
7	Alpha Pinene	5.98	0.00	1870.44	708.81	1870.44	14.86
8	Camphene	6.40	0.00	2535.64	854.50	2535.64	20.15
9		6.51	0.00	2.44	1.07	2.44	0.02
10		6.98	0.00	2.24	0.79	2.24	0.02
11		7.07	0.00	12.65	5.13	12.65	0.10
12	Beta Pinene	7.18	0.00	358.86	143.15	358.86	2.85
13	Myrcene	7.59	0.00	423.63	171.08	423.63	3.37
14		8.03	0.00	49.58	19.14	49.58	0.39
15	delta-3-carene	8.24	0.00	668.85	244.10	668.85	5.32
16	Alpha Terpinene	8.43	0.00	28.93	11.32	28.93	0.23
17	Para-Cymene	8.69	0.00	19.18	6.59	19.18	0.15
18	d-Limonene	8.86	0.00	542.39	185.00	542.39	4.31
19	1.8 Cineol	8.93	0.00	67.48	28.13	67.48	0.54
20		9.15	0.00	3.22	1.24	3.22	0.03
21		9.52	0.00	2.92	1.09	2.92	0.02
22	Gamma Terpinene	9.91	0.00	25.05	9.09	25.05	0.20
23		10.38	0.00	8.09	2.41	8.09	0.06
24		10.92	0.00	2.91	1.22	2.91	0.02
25	Terpinolene	11.01	0.00	130.49	41.61	130.49	1.04
26		11.13	0.00	12.61	4.14	12.61	0.10
27	Linalool	11.45	0.00	53.09	18.09	53.09	0.42
28		11.53	0.00	9.77	3.32	9.77	0.08
29		11.86	0.00	5.33	1.78	5.33	0.04
30		11.96	0.00	3.25	1.18	3.25	0.03
31		12.26	0.00	2.62	0.82	2.62	0.02
32		12.43	0.00	18.27	5.51	18.27	0.15
33		12.93	0.00	12.48	3.52	12.48	0.10
34		13.13	0.00	17.56	4.49	17.56	0.14
35	Camphor	13.30	0.00	63.45	18.79	63.45	0.50
36		13.51	0.00	8.33	2.74	8.33	0.07

Black Spruce Org

HP-5 5% Phenyl Methyl Siloxane

5211-HBIA

30.000m

Canada

250.000um

Picea Mariana

0.250um

Sample/Solvent: 0.05g/0.5g

Injection Amount: 0.2uL

20:1 Split Ratio

8/30/2024 1:03:31 PM

8/30/2024

8/30/2024 1:03:31 PM

2:40:18 PM

#	Compound Name	Meas. Ret.	Amount	Response	Height	Area	Area %
37		13.65	0.00	13.11	3.94	13.11	0.10
38		13.93	0.00	24.44	8.05	24.44	0.19
39	Borneol	14.02	0.00	195.42	56.02	195.42	1.55
40	Terpin-4-Ol	14.47	0.00	28.30	8.68	28.30	0.22
41	alpha terpineol	15.02	0.00	52.59	16.28	52.59	0.42
42		15.53	0.00	9.23	2.70	9.23	0.07
43		15.64	0.00	6.84	1.56	6.84	0.05
44		16.20	0.00	48.28	13.95	48.28	0.38
45		16.59	0.00	184.72	49.88	184.72	1.47
46		17.66	0.00	61.23	16.85	61.23	0.49
47		18.54	0.00	42.05	9.36	42.05	0.33
48		18.72	0.00	17.44	3.14	17.44	0.14
49	bornyl acetate	18.99	0.00	3378.65	562.30	3378.65	26.85
50		19.33	0.00	22.70	7.06	22.70	0.18
51		19.43	0.00	18.78	5.71	18.78	0.15
52		19.54	0.00	13.32	4.10	13.32	0.11
53		20.82	0.00	11.47	3.61	11.47	0.09
54		20.94	0.00	5.55	1.74	5.55	0.04
55		21.09	0.00	3.97	1.14	3.97	0.03
56		21.40	0.00	12.52	3.43	12.52	0.10
57		21.58	0.00	12.15	3.78	12.15	0.10
58		22.43	0.00	8.51	2.53	8.51	0.07
59		22.78	0.00	30.84	9.61	30.84	0.25
60		23.08	0.00	18.62	5.77	18.62	0.15
61		23.54	0.00	9.45	2.54	9.45	0.08
62		24.10	0.00	36.26	10.29	36.26	0.29
63		25.14	0.00	3.00	0.81	3.00	0.02
64		25.29	0.00	7.96	2.25	7.96	0.06
65		25.40	0.00	8.48	2.47	8.48	0.07
66		25.76	0.00	11.70	2.06	11.70	0.09
67		26.18	0.00	16.40	4.62	16.40	0.13
68		26.30	0.00	28.12	6.74	28.12	0.22
69		26.45	0.00	18.39	5.05	18.39	0.15
70		26.63	0.00	5.22	1.58	5.22	0.04
71		26.84	0.00	6.32	1.79	6.32	0.05
72		26.98	0.00	12.17	2.77	12.17	0.10
73		27.20	0.00	52.84	13.47	52.84	0.42
74		27.69	0.00	56.39	16.22	56.39	0.45
75		28.07	0.00	208.68	55.03	208.68	1.66
76		28.36	0.00	4.91	1.53	4.91	0.04
77		28.55	0.00	12.14	3.50	12.14	0.10
78		28.78	0.00	19.42	5.49	19.42	0.15
79		29.43	0.00	4.04	1.27	4.04	0.03
80		30.28	0.00	3.34	0.93	3.34	0.03
81		31.46	0.00	20.69	5.74	20.69	0.16
82		32.26	0.00	19.76	3.27	19.76	0.16
83		32.70	0.00	15.64	4.51	15.64	0.12
84		34.35	0.00	5.89	1.73	5.89	0.05