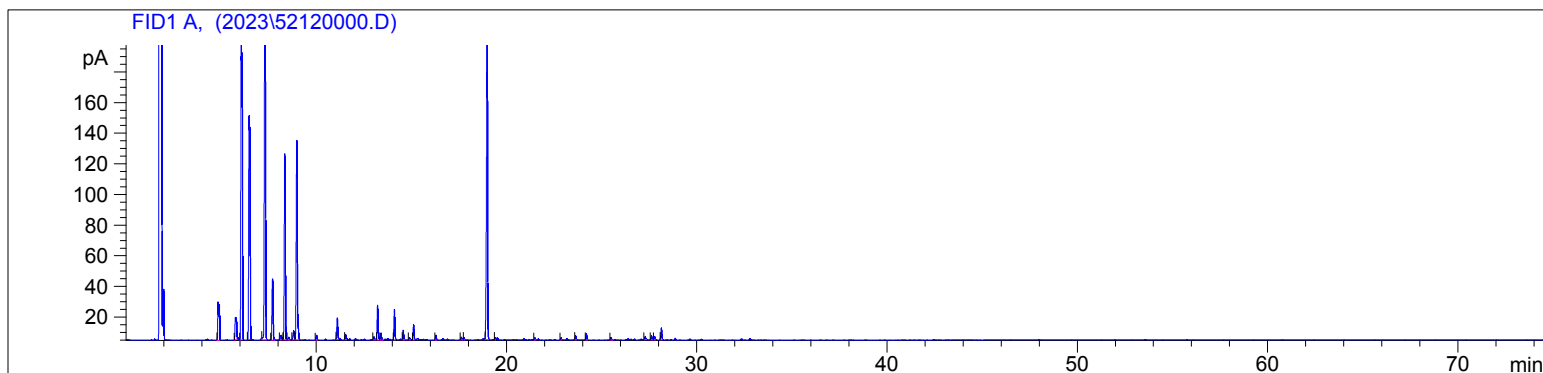


Spruce, White
5212-BZIN
Canada
Picea glauca
Sample/Solvent: 0.07g/0.50g
Injection Amount: 0.2uL
15:1 Split Ratio

HP-5 5% Phenyl Methyl Siloxane
30.000m
250.000um
0.250um

2/21/2023 9:46:26 AM
2/21/2023 9:46:26 AM

2/21/2023
11:37:44 AM



#	Compound Name	Meas. Ret.	Amount	Response	Height	Area	Area %
1	santene	4.83	0.00	144.50	25.16	144.50	2.62
2	tricyclene	5.74	0.00	84.98	14.72	84.98	1.54
3	alpha pinene	6.05	0.00	1069.92	194.65	1069.92	19.39
4	camphene	6.47	0.00	766.58	145.94	766.58	13.89
5	beta pinene	7.29	0.00	952.03	197.42	952.03	17.25
6	myrcene	7.70	0.00	171.66	39.69	171.66	3.11
7	alpha phellandrene	8.14	0.00	13.58	2.99	13.58	0.25
8	delta-3-carene	8.34	0.00	495.66	121.03	495.66	8.98
9		8.55	0.00	7.11	1.81	7.11	0.13
10	para cymene	8.81	0.00	25.65	5.93	25.65	0.46
11	d-limonene	8.97	0.00	529.41	129.85	529.41	9.59
12	gamma terpinene	10.03	0.00	11.05	3.15	11.05	0.20
13	terpinolene	11.12	0.00	50.15	13.86	50.15	0.91
14	linalool	11.55	0.00	11.91	3.31	11.91	0.22
15		13.05	0.00	6.92	1.88	6.92	0.13
16	camphor	13.23	0.00	80.44	22.60	80.44	1.46
17		13.41	0.00	15.62	4.40	15.62	0.28
18	borneol	14.12	0.00	68.49	19.71	68.49	1.24
19	terpin-4-ol	14.58	0.00	20.72	6.14	20.72	0.38
20		14.91	0.00	5.42	1.51	5.42	0.10
21	alpha terpineol	15.12	0.00	32.67	9.83	32.67	0.59
22		16.30	0.00	10.79	3.04	10.79	0.20
23		17.63	0.00	6.28	1.65	6.28	0.11
24		17.78	0.00	4.65	1.39	4.65	0.08
25	bornyl acetate	19.00	0.00	838.50	214.80	838.50	15.19
26		19.41	0.00	4.05	1.28	4.05	0.07
27		21.50	0.00	4.88	1.34	4.88	0.09
28		22.87	0.00	4.68	1.36	4.68	0.08
29		23.64	0.00	8.86	2.47	8.86	0.16
30	beta caryophyllene	24.21	0.00	14.87	4.20	14.87	0.27
31	alpha humulene	25.50	0.00	5.63	1.63	5.63	0.10
32	gamma cadinene	27.30	0.00	6.73	2.01	6.73	0.12
33		27.63	0.00	8.66	2.60	8.66	0.16
34	delta cadinene	27.79	0.00	7.45	2.12	7.45	0.13
35	cadina-1,4-diene	28.15	0.00	28.43	7.70	28.43	0.52

